

RNAV (GPS) PRM Y RWY 10R

(CLOSE PARALLEL)

CHICAGO O'HARE INTL (ORD)

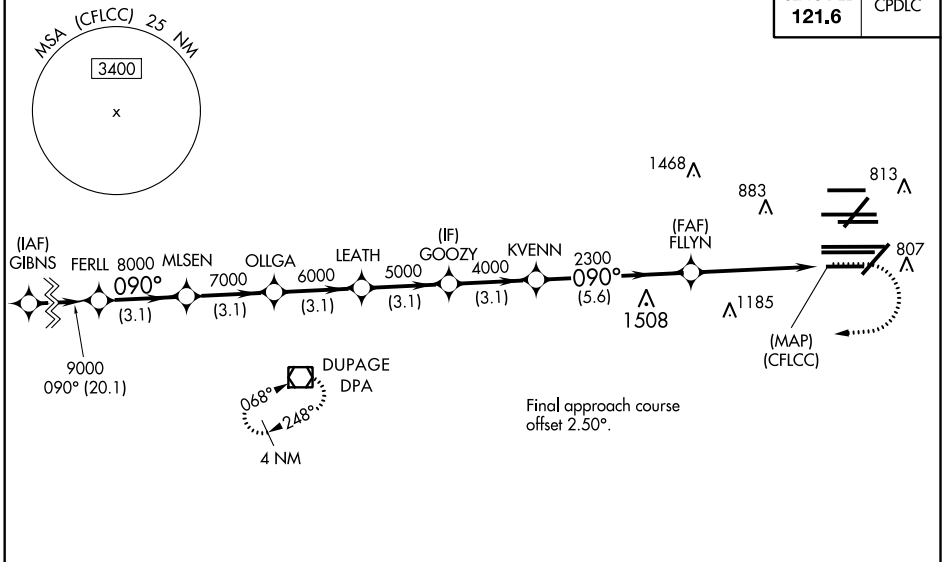
WAAS CH 77937 W10D	APP CRS 090°	Rwy Idg TDZE Apt Elev	7500 680 680
--	------------------------	-----------------------------	---

RNP APCH.
 Simultaneous approach authorized. Dual VHF comm required. See additional requirements on AAUP. For uncompensated Baro-VNAV systems, LNAV/VNAV NA below -19°C or above 54°C. Use of FD or AP providing RNAV track guidance required during simultaneous operations. For inop ALS, increase LNAV/VNAV all Cats visibility to 1 $\frac{1}{2}$ SM.

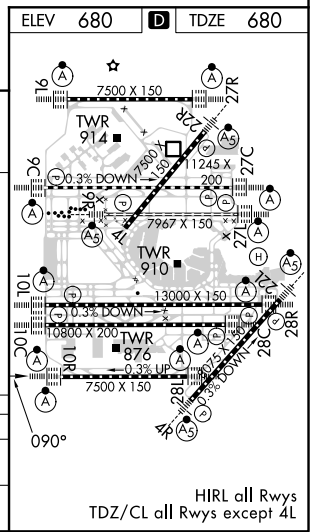
ALS-2
 MISSED APPROACH: Climb to 1200 then climbing right turn to 4000 direct DPA VOR/DME and hold.

D-ATIS 135.4 282.225	CHICAGO APP CON 119.0 292.125	O'HARE TOWERS 128.15 348.0 (Rwy 9L/27R) 133.0 348.0 (10R/28L) 120.75 121.15 126.9 132.7 348.0 (CENTER) PRM 128.05	GND CON (TWR CENTER) 124.125 (TWR NORTH) 121.75 (OBND) (TWR SOUTH) 121.9 (IBND) 226.675 (ALL TWR)
--	---	--	---

CINC DEL 121.6	CPDLC
--------------------------	-------



	ELEV 680	TDZE 680
FERLL	9000	090°
MLSEN	8000	090°
OLLGA	7000	090°
LEATH	6000	090°
GOOZY	5000	090°
KVENN	4000	090°
FLLYN	2300	090°
(CFLLC)		
GP 3.00 TCH 55		
	3.1 NM	3.1 NM
	3.1 NM	3.1 NM
	3.1 NM	3.1 NM
	3.1 NM	3.1 NM
	5.6 NM	4.9 NM
CATEGORY	A	B
LPV DA	930/24	250 (300- $\frac{1}{2}$)
LNAV/VNAV DA	1157/50	477 (500-1)



RNAV (GPS) PRM Y RWY 10R (CLOSE PARALLEL)

EC-3, 15 JUL 2021 to 12 AUG 2021

EC-3, 15 JUL 2021 to 12 AUG 2021