

CHICAGO, ILLINOIS

AL-166 (FAA)

RNAV (GPS) PRM Y RWY 28L

21112

WAAS CH 93839 W28E	APP CRS 275°	Rwy Idg TDZE 667 Apt Elev 680	7500
--	------------------------	---	-------------

(CLOSE PARALLEL)
CHICAGO O'HARE INTL (ORD)

RNP APCH. RADAR required.

▼ For uncompensated Baro-VNAV systems, LNAV/VNAV NA below -19°C or above 54°C. Simultaneous approach authorized. Use of FD or AP required during simultaneous operations. Dual VHF comm required. See additional requirements on AAPP.

ALSf-2

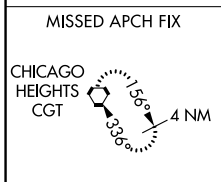
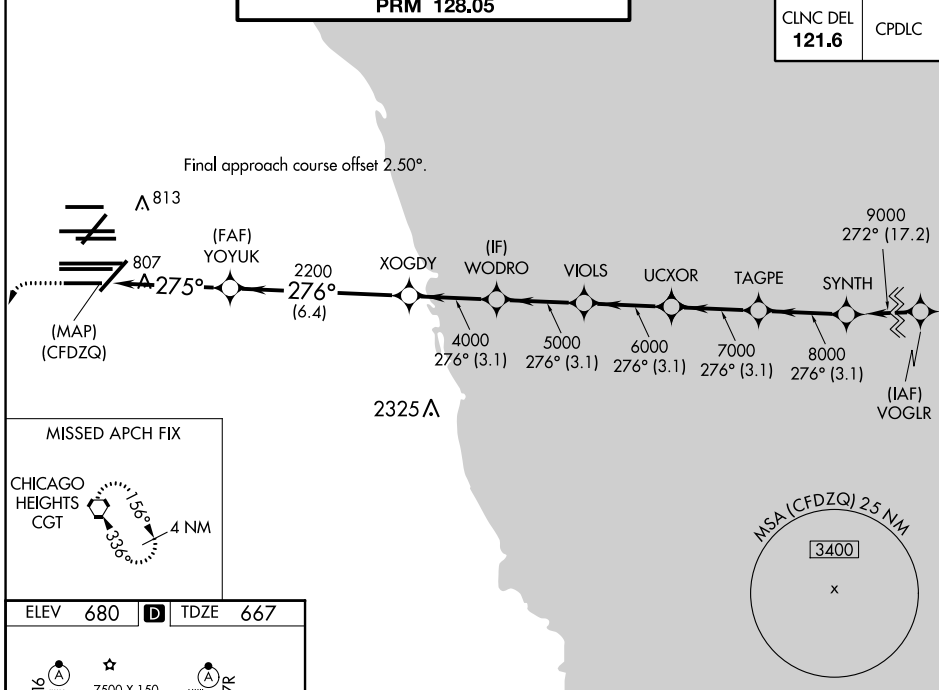
MISSED APPROACH: Climb to 1200 then climbing left turn to 4000 direct CGT VORTAC and hold.

D-ATIS 135.4 282.225	CHICAGO APP CON 119.0 292.125
--	---

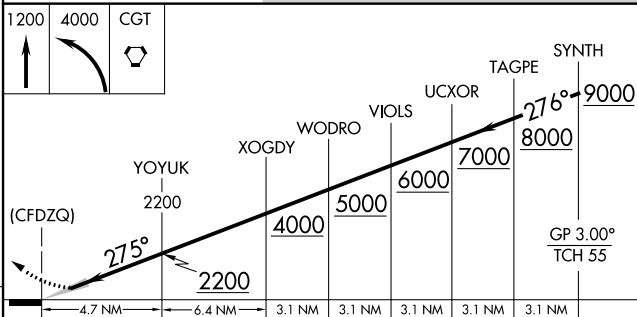
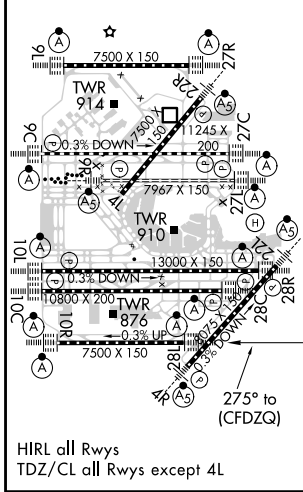
O'HARE TOWERS			
128.15	348.0 (Rwy 9L/27R)	133.0	348.0 (10R/28L)
120.75	121.15	126.9	132.7 348.0 (CENTER)
PRM 128.05			

GND CON		(TWR CENTER)
124.125	(TWR NORTH)	121.75 (OBND)
118.05	(TWR SOUTH)	121.9 (IBND)
226.675 (ALL TWRs)		

CLNC DEL 121.6	CPDLC
--------------------------	-------



ELEV 680	D	TDZE 667
-----------------	----------	-----------------



CATEGORY	A	B	C	D
LPV DA		917/24	250 (300-1/2)	
LNAV/VNAV DA		1090/40	423 (500-3/4)	

CHICAGO, ILLINOIS
Orig-A 13SEP18

41°59'N-87°54'W

CHICAGO O'HARE INTL (ORD)

RNAV (GPS) PRM Y RWY 28L (CLOSE PARALLEL)

EC-3, 15 JUL 2021 to 12 AUG 2021

EC-3, 15 JUL 2021 to 12 AUG 2021