

APP CRS <b>273°</b>	Rwy Idg TDZE Apt Elev	<b>7782</b> <b>654</b> <b>680</b>
------------------------	-----------------------------	---

# RNAV (RNP) Y RWY 27L

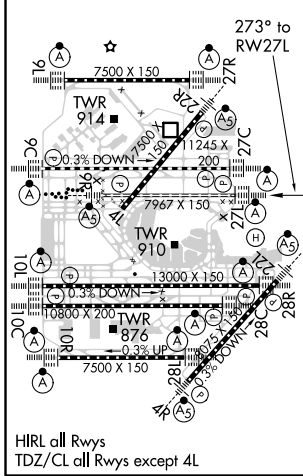
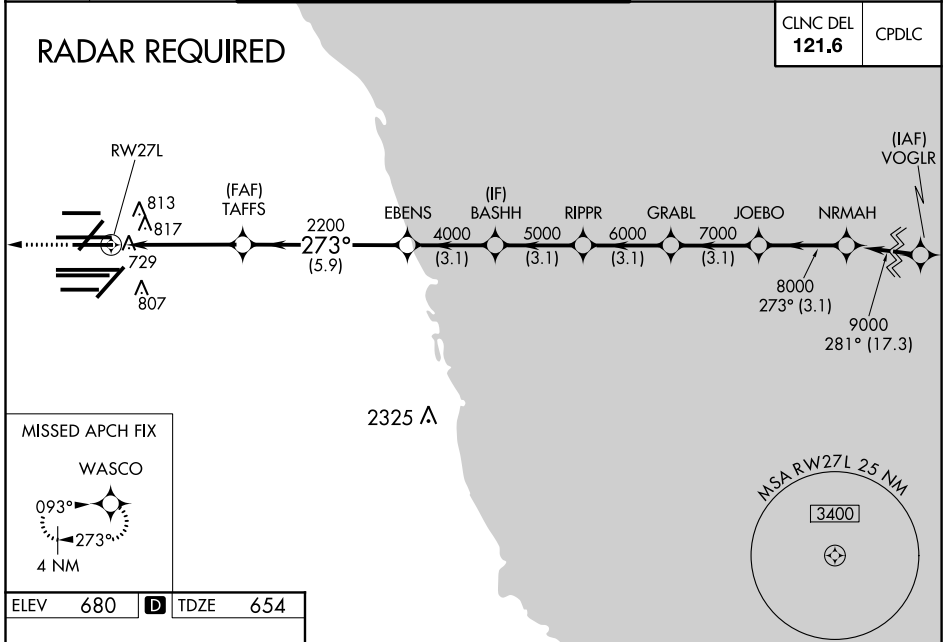
CHICAGO O'HARE INTL (ORD)

▼ For uncompensated Baro-VNAV systems, procedure NA below -19°C (-2°F) or above 54°C (130°F). Simultaneous approach authorized. GPS required. Use of FD or AP providing RNAV track guidance required during simultaneous operations.

ALSF-2

MISSED APPROACH: Climb to 4000 on track 273° to WASCO and hold.

D-ATIS <b>135.4</b>	CHICAGO APP CON <b>119.0 292.125</b>	O'HARE TOWERS <b>128.15 348.0</b> (Rwy 9L/27R) <b>133.0 348.0</b> (10R/28L)	GND CON (TWR NORTH) <b>124.125</b>	(TWR CENTER) <b>121.75</b>	(IBND) <b>121.9</b>
<b>282.225</b>		<b>120.75 121.15 126.9 132.7 348.0</b> (CENTER)	<b>226.675</b> (ALL TWS)		



ELEV 680	D	TDZE 654
WASCO	VGSI and RNAV glidepath not coincident (VGSI Angle 3.00/TCH 67).	NRMAH
4000 tr 273°		
TAFS 2200	EBENS 4000	BASHH 5000
RIPPR 6000	GRABL 7000	JOEBO 8000
NRMAH 9000		
GP 3.00°		TCH 55
4.7 NM	5.9 NM	3.1 NM
3.1 NM	3.1 NM	3.1 NM
3.1 NM		

CATEGORY	A	B	C	D
RNP 0.15 DA		992/30	338 (400-%)	
RNP 0.30 DA		1162-1¼	508 (500-1¼)	

**AUTHORIZATION REQUIRED**

EC-3, 15 JUL 2021 to 12 AUG 2021

EC-3, 15 JUL 2021 to 12 AUG 2021