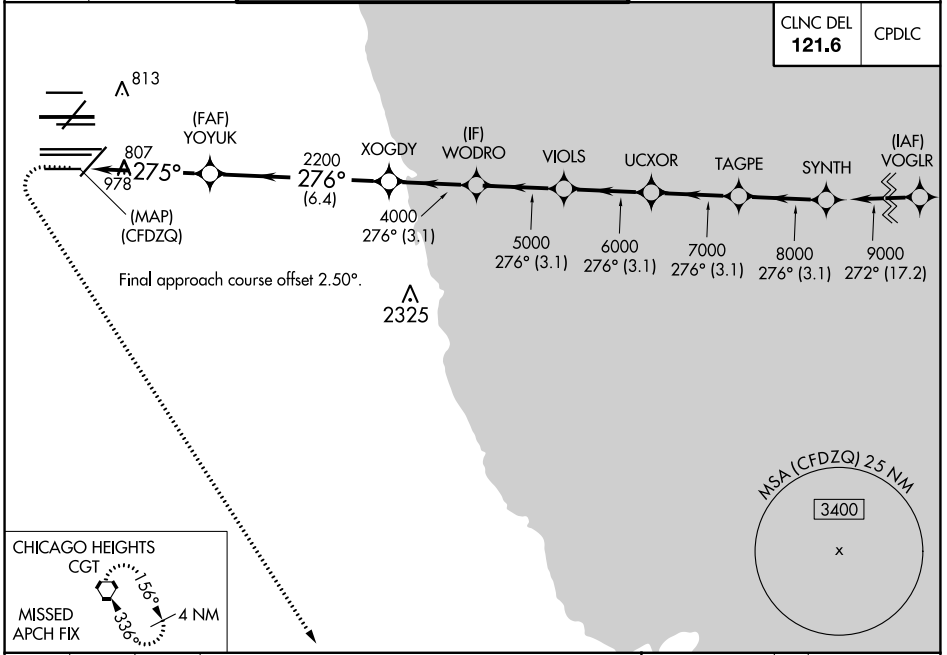


WAAAS CH 93839 W28E	APP CRS 275°	Rwy ldg TDZE 667 Apt Elev 680	7500
---	------------------------	---	-------------

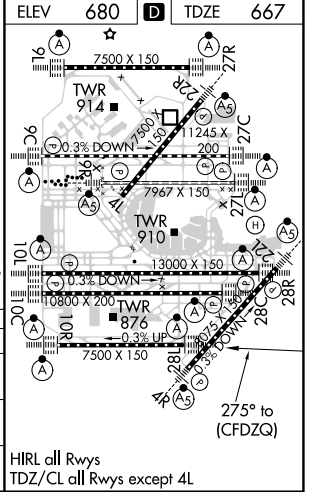
RNAV (GPS) Y RWY 28L

CHICAGO O'HARE INTL (ORD)

RNP APCH: Simultaneous approach authorized. LNAV procedure NA during simultaneous operations. For uncompensated Baro-VNAV systems, LNAV/VNAV NA below -19°C or above 54°C. Use of FD or AP required during simultaneous operations.		ALSF-2 	MISSED APPROACH: Climb to 1200 then climbing left turn to 4000 direct CGT VORTAC and hold.
D-ATIS 135.4 282.225	CHICAGO APP CON 119.0 292.125	O'HARE TOWERS 128.15 348.0 (Rwy 9L/27R) 133.0 348.0 (10R/28L) 120.75 121.15 126.9 132.7 348.0 (CENTER)	GND CON (TWR CENTER) 124.125 (TWR NORTH) 121.75 (OBND) 118.05 (TWR SOUTH) 121.9 (IBND) 226.675 (ALL TWS)



1200	4000	CGT	SYNTH
*LNAV only			
	YOYUK 2200	XOGDY 4000	WODRO 5000
		VIOLS 6000	UCXOR 7000
			TAGPE 8000
			SYNTH 9000
	1.1	3.6 NM	6.4 NM
		3.1 NM	3.1 NM
		3.1 NM	3.1 NM
		3.1 NM	3.1 NM
		3.1 NM	3.1 NM
			GP 3.00° TCH 55
CATEGORY	A	B	C
LPV DA		917/24	250 (300-1/2)
LNAV/VNAV DA		1090/40	423 (500-3/4)
LNAV MDA	1060/24	393 (400-1/2)	1060/35 393 (400-5/8)



EC-3, 15 JUL 2021 to 12 AUG 2021

EC-3, 15 JUL 2021 to 12 AUG 2021