

WAAS CH <b>77804</b> <b>W27A</b>	APP CRS <b>273°</b>	Rwy Idg TDZE Apt Elev	<b>7782</b> <b>654</b> <b>680</b>
--	------------------------	-----------------------------	---

# RNAV (GPS) Z RWY 27L

CHICAGO O'HARE INTL (ORD)

▼ For uncompensated Baro-VNAV systems, LNAV/VNAV NA below -19°C (-2°F) or above 54°C (130°F). Simultaneous approach authorized. DME/DME RNP-0.3 NA. LNAV procedure NA during simultaneous operations. Use of FD or AP providing RNAV track guidance required during simultaneous operations. For inop ALSF-2, increase LNAV Cat C/D visibility to 1½ mile.



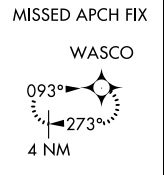
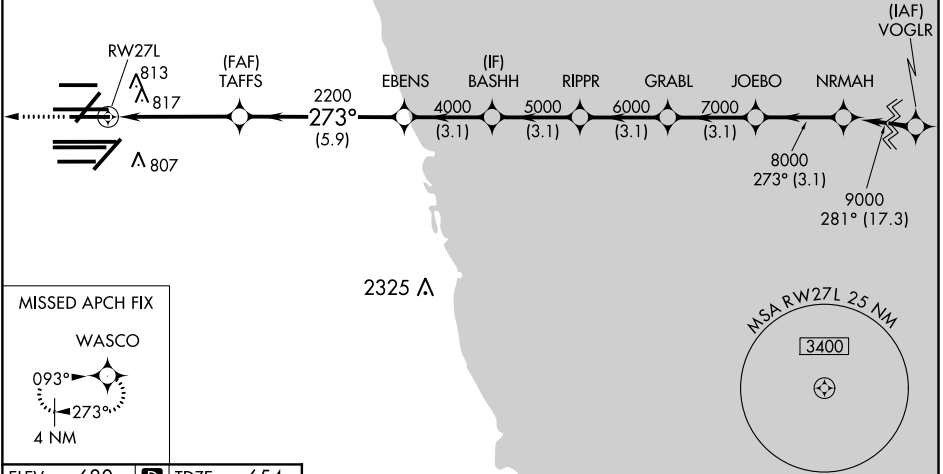
MISSED APPROACH:  
Climb to 4000 direct  
WASCO and hold.

D-ATIS <b>135.4</b>	CHICAGO APP CON <b>282.225 119.0 292-125</b>	O'HARE TOWERS <b>128.15 348.0</b> (Rwy 9L/27R) <b>133.0 348.0</b> (10R/28L)	GND CON (TWR CENTER) <b>124.125</b> (TWR NORTH) <b>121.75</b> (OBND)
		<b>120.75 121.15 126.9 132.7 348.0</b> (CENTER)	<b>118.05</b> (TWR SOUTH) <b>121.9</b> (IBND)
			<b>226.675</b> (ALL TWS)

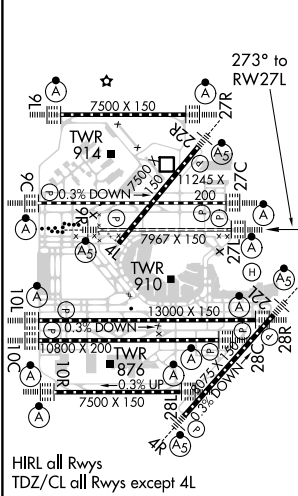
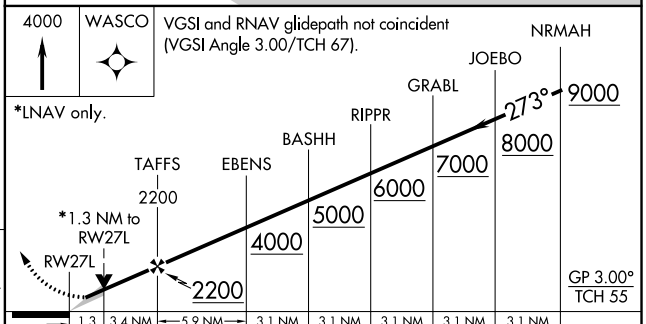
## RADAR REQUIRED

CLNC DEL  
**121.6**

CPDLC



ELEV 680	<b>D</b>	TDZE 654
----------	----------	----------



CATEGORY	A	B	C	D
LPV DA	854/18 200 (200-½)			
LNAV/VNAV DA	1125/60 471 (500-1¼)			
LNAV MDA	1120/24	466 (500-½)	1120/50	466 (500-1)

# RNAV (GPS) Z RWY 27L

EC-3, 15 JUL 2021 to 12 AUG 2021

EC-3, 15 JUL 2021 to 12 AUG 2021