

VOR/DME LRP <b>117.3</b> Chan <b>120</b>	APP CRS <b>290°</b>	Rwy Idg TDZE <b>308</b> Apt Elev <b>310</b>
--	------------------------	---

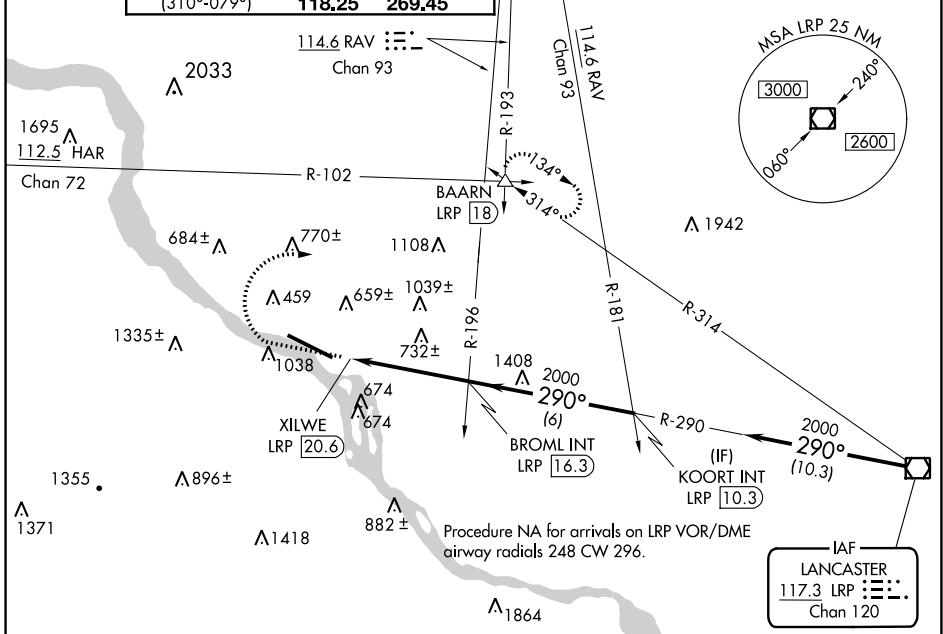
# VOR RWY 31

HARRISBURG INTL (MDT)

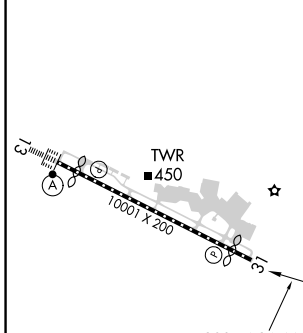
**⚠** Circling NA south of Rwy 13-31. Rwy 31 helicopter visibility reduction below  $\frac{3}{4}$  SM NA.  
**⚠** -17°C

MISSED APPROACH: Climb to 1500 then climbing right turn to 3000 on heading 090° and RAV VORTAC R-193 to BAARN INT/LRP 18 DME and hold.

ATIS <b>118.8</b>	HARRISBURG APP CON (080°-179°) <b>126.45</b> <b>281.525</b> (180°-309°) <b>124.1</b> <b>273.525</b> (310°-079°) <b>118.25</b> <b>269.45</b>	HARRISBURG INTL TOWER <b>124.8</b> <b>269.35</b>	GND CON <b>121.7</b> <b>348.6</b>
----------------------	--	---	--------------------------------------



ELEV 310	<b>D</b>	TDZE 308
----------	----------	----------



FAF to MAP 4.3 NM					
Knots	60	90	120	150	180
Min:Sec	4:18	2:52	2:09	1:43	1:26

1500	3000	RAV R-193	BAARN	BROML INT LRP 16.3	KOORT INT LRP 10.3
↑	hdg 090°		△		
XILWE LRP 20.6		2000		290° 2000	
0.9		4.3 NM		6 NM	
≤3.00°	TCH 51				
CATEGORY	A	B	C	D	
S-31	1160/55 852 (900-1)	1160/60 852 (900-1¼)	1160-2½	852 (900-2½)	
CIRCLING	1160-1¼	850 (900-1¼)	1160-2½ 850 (900-2½)	1160-2¾ 850 (900-2¾)	

# VOR RWY 31

NE-4, 15 JUL 2021 to 12 AUG 2021

NE-4, 15 JUL 2021 to 12 AUG 2021