

COASTAL EIGHT DEPARTURE

**TOP ALTITUDE:
3000**

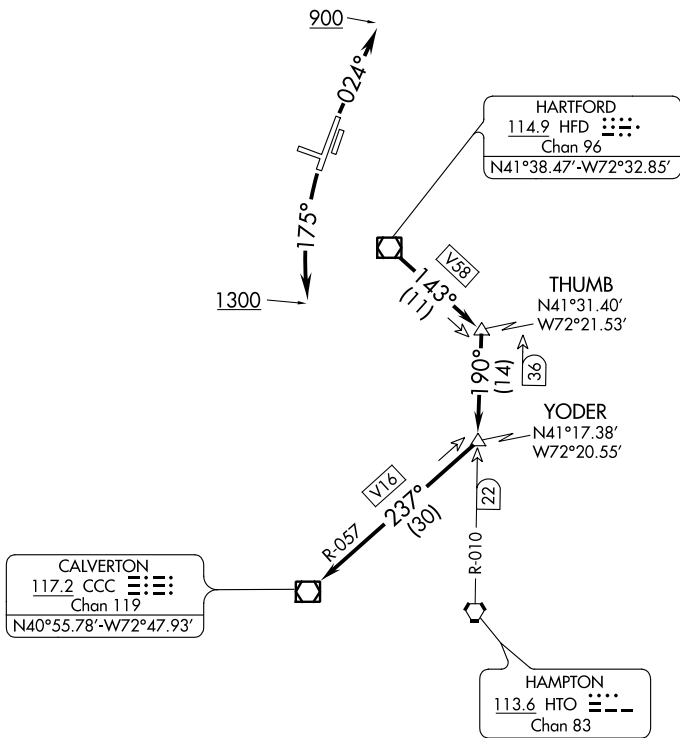
ATIS 126.45
GND CON
121.6
BRAINARD TOWER ★
119.6 (CTAF) 248.2
YANKEE DEP CON
127.8 269.325

TAKEOFF MINIMUMS:

Rwys 11, 29: NA-Environmental.

Rwy 2: Standard.

Rwy 20: 200-1 $\frac{3}{8}$ or standard with minimum climb of 220' per NM to 300, or alternatively, with standard takeoff minimums and a normal 200' per NM climb gradient, takeoff must occur no later than 1500' prior to DER.



NE-1, 15 JUL 2021 to 12 AUG 2021

NE-1, 15 JUL 2021 to 12 AUG 2021

NOTE: RADAR required.

NOTE: Initial departure headings are predicated on avoiding noise sensitive areas, flight crew awareness and compliance is important in minimizing noise impacts on surrounding communities.

(NARRATIVE ON FOLLOWING PAGE)

NOTE: Chart not to scale.

COASTAL EIGHT DEPARTURE