

KEY WEST, FLORIDA

# COPTER TACAN W RWY 4

AL-214 [USN] KEY WEST NAS (BOCA CHICA FLD) (KNQX)

TACAN	NQX	APCH CRS	Rwy ldg TDZE	<b>7002</b>
Chan <b>78</b>		<b>044°</b>	Arprt Elev	<b>4 6</b>

**⚠ CAUTION:** When Rwy 14, 22 VGSi inop, circling to Rwy 14, 22 NA at night.

**† MISSED APPROACH:** Climb to 1600 via NQX TACAN R-224 to NQX, then via NQX R-094 to CANIN and hold

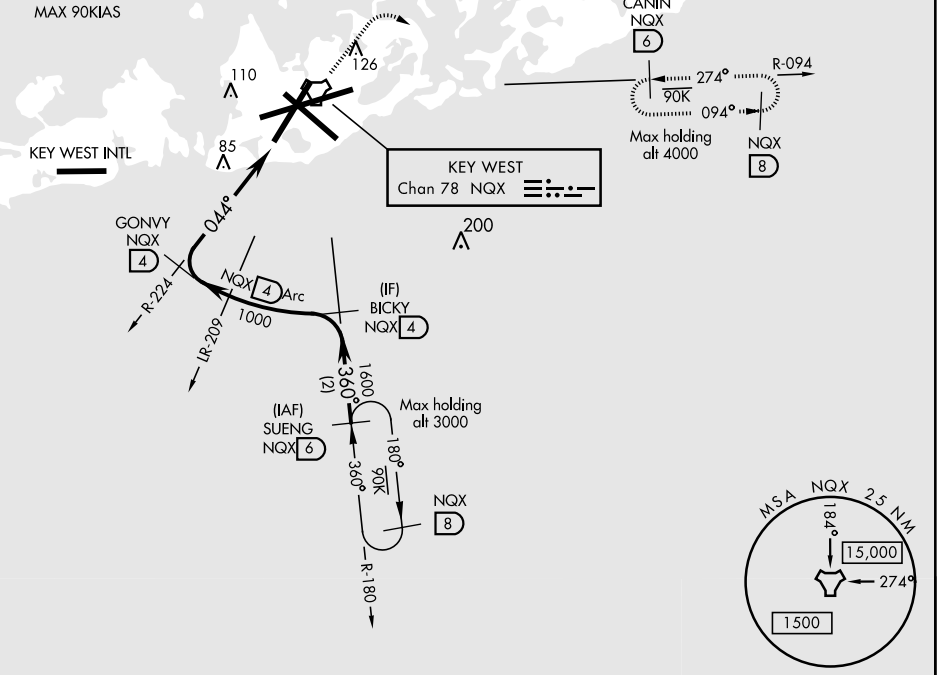
ATIS ★ <b>307.025</b>	NAVY KEY WEST APP CON <b>124.025 313.7</b>	NAVY KEY WEST TOWER ★ <b>118.575 361.25</b>	GND CON <b>121.7 336.45</b>	CLNC DEL <b>121.2 357.4</b>	ASR/PAR
--------------------------	---	--	--------------------------------	--------------------------------	---------

**† CAUTION:** Missed Approach  
Minimum Climb Rate to 500

Knots	60	120	180	240	300	360
V/V(fpm)	225	450	675	900	1125	1350

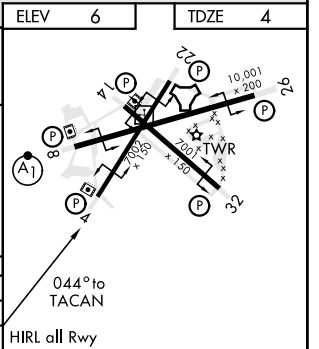
Controlling Obstacle 110

**CAUTION:** Balloon with strobe light on unmarked cable to 14,000 in R-2916.



EMERG SAFE ALT 100 NM 15,000

SUENG	BICKY R-180	GONVY R-224	NQX	CANIN
1600	1600	1000	1600	
			BTARM 1.2	TACAN
			2.1	
				2.8 NM
CATEGORY	COPTER			
S-4	360-1	356	(400-1)	
<b>C</b> CIRCLING	460-1	454	(500-1)	



SE-3, 15 JUL 2021 to 12 AUG 2021

SE-3, 15 JUL 2021 to 12 AUG 2021

KEY WEST, FLORIDA

Amtd 1 21MAY20

24° 34'N - 81° 41'W

KEY WEST NAS (BOCA CHICA FLD) (KNQX)

# COPTER TACAN W RWY 4