

HI-TACAN W RWY 8

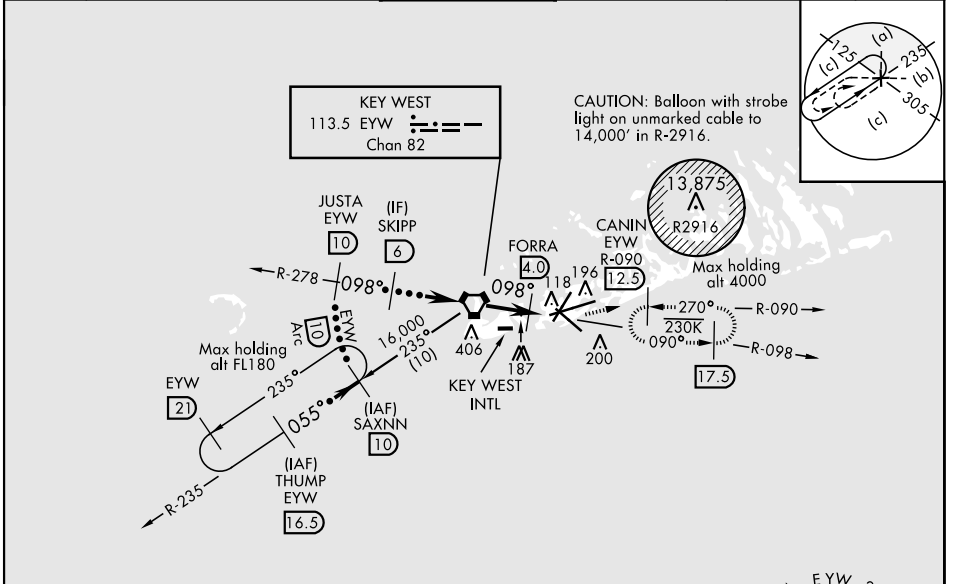
VORTAC EYW 113.5 Chan 82	APCH CRS 098°	Rwy Idg 10,001 TDZE 4 Arprt Elev 6
--	-------------------------	---

JAL-214 [USN]

KEY WEST NAS (BOCA CHICA FLD) (KNQX)

	MISSED APPROACH: Climbing left turn to 1600 intercept EYW VORTAC R-090 to CANIN and hold.	

ATIS ★ 307.025	NAVY KEY WEST APP CON 124.025 313.7	NAVY KEY WEST TOWER ★ 118.575 340.25	GND CON 121.7 336.45	CLNC DEL 121.2 357.4	ASR/PAR
--------------------------	---	--	--------------------------------	--------------------------------	---------



CAUTION: Descent gradient exceeds standards.
Recommend:
Continuous descent from IAF THUMP to SKIPP 800'/NM
Continuous descent from IAF SAXNN to SKIPP 730'/NM

EMERG SAFE ALT 100 NM 15,000

	† Or as directed by ATC †† FORRA to MAP		1600 EYW R-090 12.5	ELEV 6	TDZE 4	
	CATEGORY	C	D	E		
	S-8	440-1¼		436 (500-1¼)		
CIRCLING	500-1½ 494 (500-1½)	560-2	554 (600-2)	HIRL all Rwy		

HI-TACAN W RWY 8

SE-3, 15 JUL 2021 to 12 AUG 2021

SE-3, 15 JUL 2021 to 12 AUG 2021