

# HI-TACAN X RWY 8

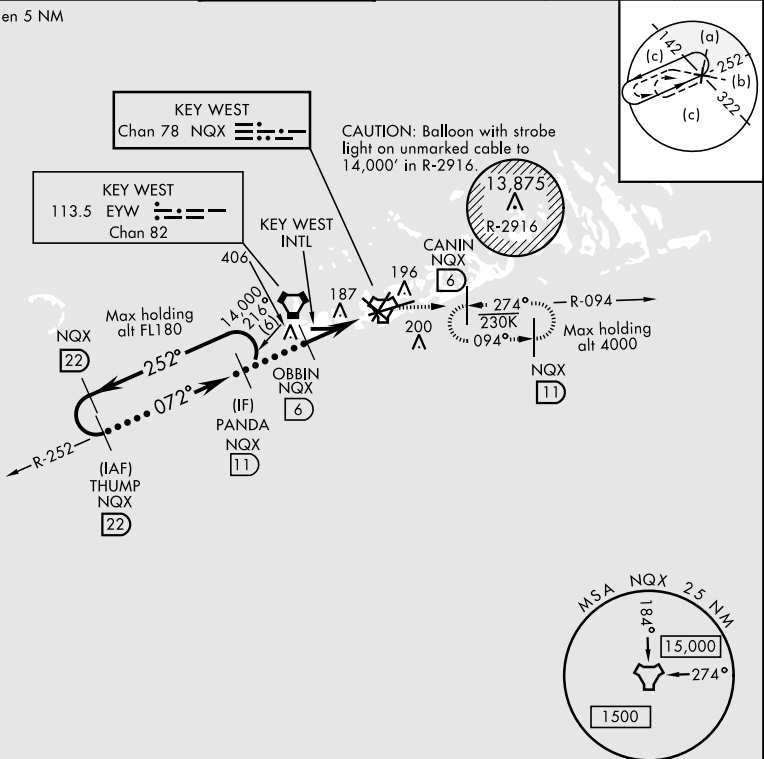
TACAN NQX Chan <b>78</b>	APCH CRS <b>072°</b>	Rwy ldg TDZE Arprt Elev <b>10,001</b> <b>4</b> <b>6</b>
-----------------------------	-------------------------	--

JAL-214 [USN] KEY WEST NAS (BOCA CHICA FLD) (KNQX)

<p>▼ *When ALS inop, increase vis to 1½ miles.</p>	<p>ALSF-1 A1</p>	<p>MISSED APPROACH: Climb to 1600 via R-252 to NQX TACAN then via R-094 to CANIN (NQX R-094/6 DME) and hold.</p>
--	----------------------	--

<p>ATIS ★ <b>307.025</b></p>	<p>NAVY KEY WEST APP CON <b>124.025 313.7</b></p>	<p>NAVY KEY WEST TOWER ★ <b>118.575 340.25</b></p>	<p>GND CON <b>121.7 336.45</b></p>	<p>CLNC DEL <b>121.2 357.4</b></p>	<p>ASR/PAR</p>
----------------------------------	---	--	--	--	----------------

CAUTION: Intmed seg len 5 NM



EMERG SAFE ALT 100 NM 15,000

<p>THUMP R-252 (22)</p> <p>PANDA (11)</p> <p>14,000 Or as directed by ATC</p> <p>3000</p> <p>072°</p> <p>072°</p> <p>2.97°</p> <p>TCH 44</p>	<p>OBBIN (6)</p> <p>1600</p>	<p>TACAN</p> <p>ZALVO (1.1)</p> <p>2.4</p>	<p>ELEV 6</p> <p>TDZE 4</p>												
<p>1600 NQX R-252</p> <p>NQX</p> <p>NQX R-094</p>															
<table border="1"> <thead> <tr> <th>CATEGORY</th> <th>C</th> <th>D</th> <th>E</th> </tr> </thead> <tbody> <tr> <td>S-8 *</td> <td>460-7/8</td> <td>456 (500-7/8)</td> <td></td> </tr> <tr> <td>CIRCLING</td> <td>500-1½ 494 (500-1½)</td> <td>560-2</td> <td>554 (600-2)</td> </tr> </tbody> </table>	CATEGORY	C	D	E	S-8 *	460-7/8	456 (500-7/8)		CIRCLING	500-1½ 494 (500-1½)	560-2	554 (600-2)	<p>HIRL all Rwy</p>		
CATEGORY	C	D	E												
S-8 *	460-7/8	456 (500-7/8)													
CIRCLING	500-1½ 494 (500-1½)	560-2	554 (600-2)												

# HI-TACAN X RWY 8

SE-3, 15 JUL 2021 to 12 AUG 2021

SE-3, 15 JUL 2021 to 12 AUG 2021