

KEY WEST, FLORIDA

RNAV (GPS) RWY 8

APCH CRS	Rwy Idg	10,001
079°	TDZE	4
	Arprt Elev	6

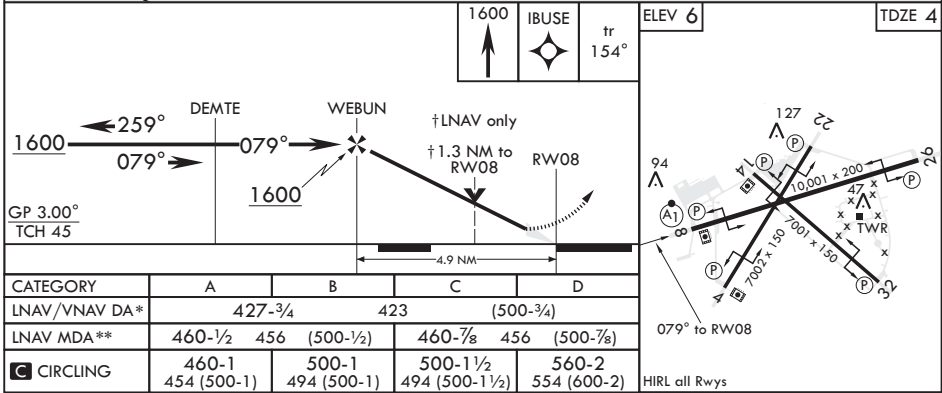
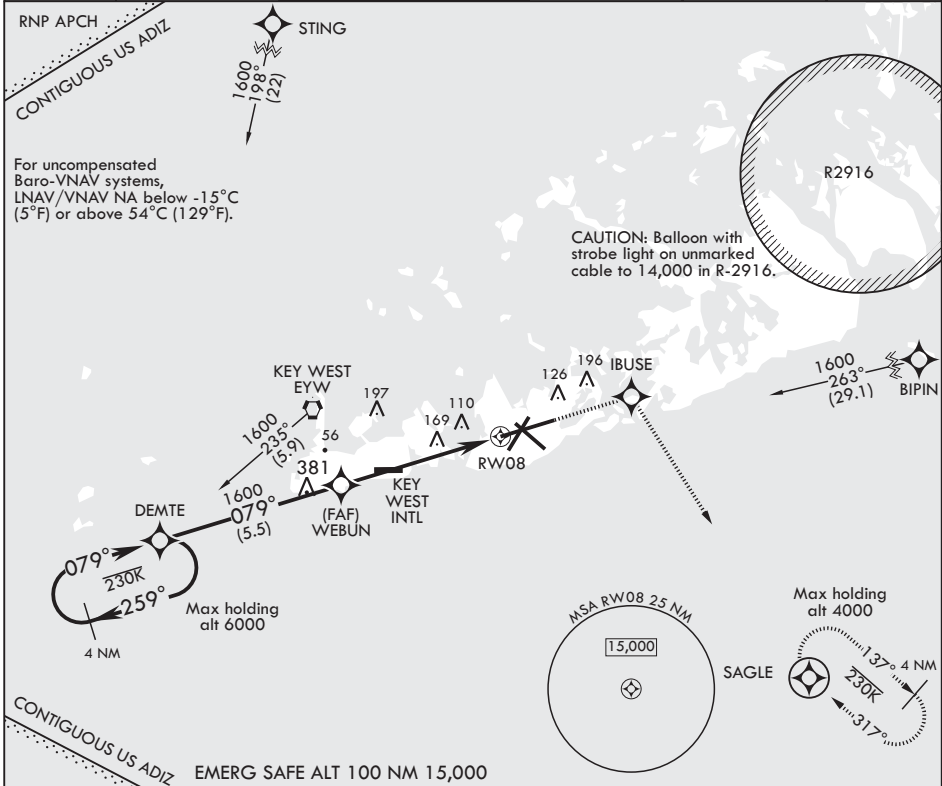
AL-214 (USN)

KEY WEST NAS (BOCA CHICA FLD) (KNQX)

V * When ALS inop, increase vis to 1 1/4 miles.
 ** When ALS inop, increase CAT AB vis to 1 mile, CAT CD vis to 1 3/8 miles.

ALS-1 MISSED APPROACH: (Do not exceed 230 KIAS until IBUSE) Climb to 1600 direct IBUSE, track 154° to SAGLE and hold, continue climb-in-hold to 1600.

ATIS*	APP CON	NAVY KEY WEST TOWER*	GND CON	CLNC DEL	ASR/PAR
307.025	124.025 313.7	118.575 340.25	121.7 336.45	121.2 357.4	



KEY WEST, FLORIDA
 Amdt 2 21MAY20

24°34'N - 81°41'W

KEY WEST NAS (BOCA CHICA FLD) (KNQX)

RNAV (GPS) RWY 8

SE-3, 15 JUL 2021 to 12 AUG 2021

SE-3, 15 JUL 2021 to 12 AUG 2021