

KEY WEST, FLORIDA

TACAN RWY 32

TACAN NQX Chan 78	APCH CRS 335°	Rwy ldg TDZE Arprt Elev 7001 4 6
--------------------------	----------------------	---

AL-214 [USN] KEY WEST NAS (BOCA CHICA FLD) (KNQX)

† MISSED APPROACH: Climb to 500. Then climbing right turn to 1600, intercept NQX R-094 to CANIN (NQX R-094/6 DME) and hold.

ATIS ★ 307.025	NAVY KEY WEST APP CON 124.025 313.7	NAVY KEY WEST TOWER ★ 118.575 340.25	GND CON 121.7 336.45	CLNC DEL 121.2 357.4	ASR/PAR
-----------------------	--	---	-----------------------------	-----------------------------	---------

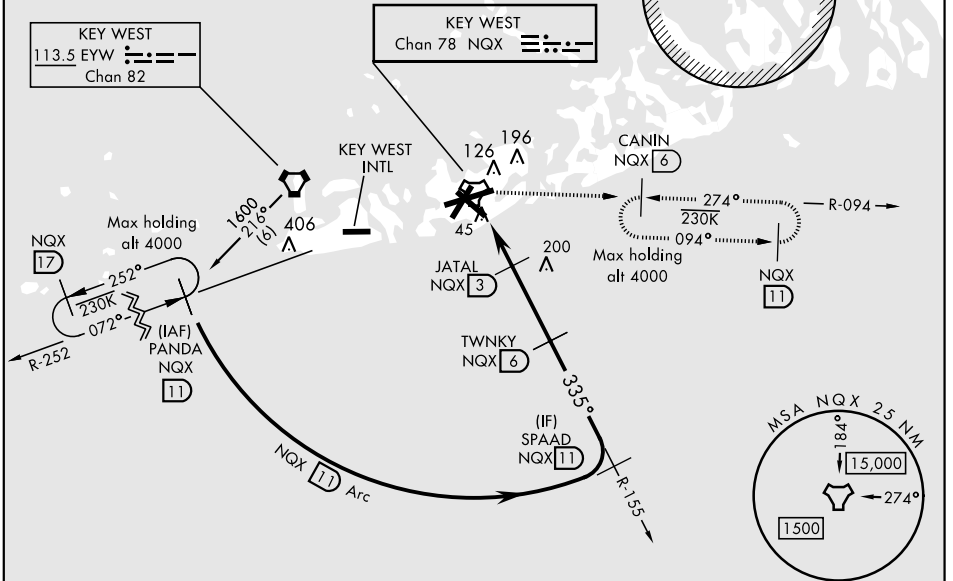
CAUTION: CAT CD intmed seg len 5 NM.

CAUTION: Balloon with strobe light on unmarked cable to 14,000 in R-2916.

† CAUTION: Missed Approach Minimum Climb Rate to 1600

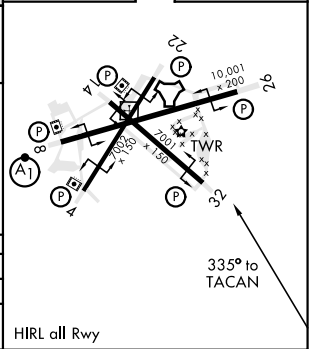
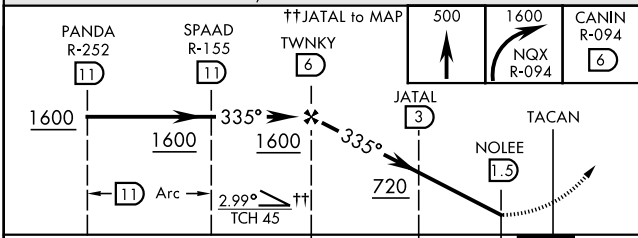
Knots	60	120	180	240	300	360
V/V(fpm)	280	560	840	1120	1400	1680

ATC Minimum Climb Rate



EMERG SAFE ALT 100 NM 15,000

ELEV 6	TDZE 4
---------------	---------------



CATEGORY	A	B	C	D
S-32		300-1	296 (300-1)	
CIRCLING	460-1 454 (500-1)	500-1 494 (500-1)	500-1½ 494 (500-1½)	560-2 554 (600-2)

HIRL all Rwy

KEY WEST, FLORIDA
Amdt 3 21MAY20

24°34'N-81°41'W KEY WEST NAS (BOCA CHICA FLD) (KNQX)

TACAN RWY 32

SE-3, 15 JUL 2021 to 12 AUG 2021

SE-3, 15 JUL 2021 to 12 AUG 2021