

# TACAN RWY 4

TACAN Chan <b>78</b>	APCH CRS <b>044°</b>	Rwy ldg TDZE Arprt Elev	<b>7002</b> <b>4</b> <b>6</b>
-------------------------	-------------------------	-------------------------------	-------------------------------------

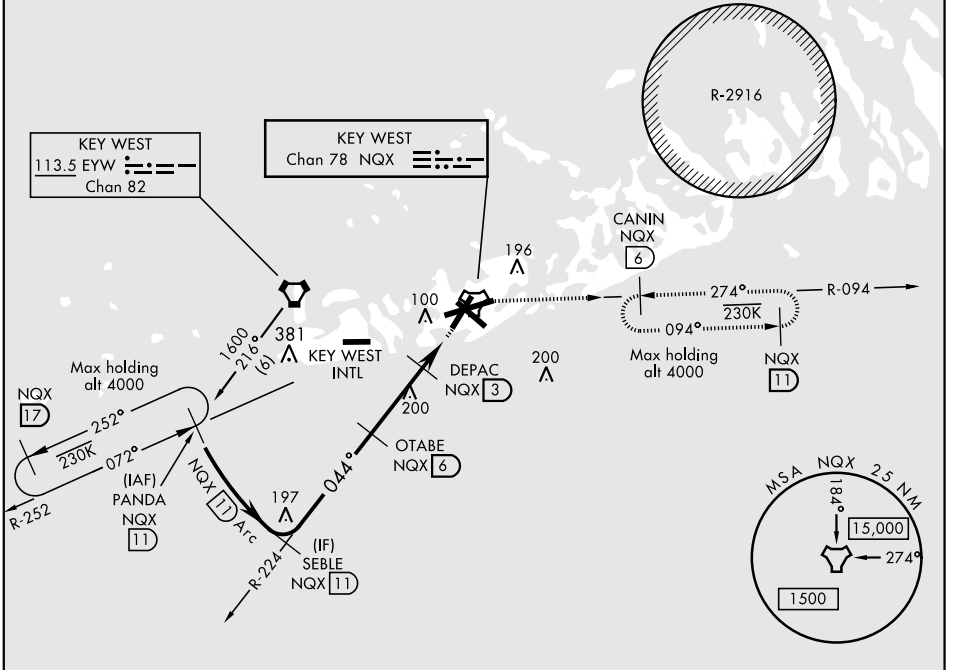
AL-214 [USN] KEY WEST NAS (BOCA CHICA FLD) (KNQX)

**▽** MISSED APPROACH: Climb to 1600 via NQX TACAN R-224 to NQX, then via NQZ R-094 to CANIN and hold.

ATIS ★ <b>307.025</b>	NAVY KEY WEST APP CON <b>124.025 313.7</b>	NAVY KEY WEST TOWER ★ <b>118.575 340.25</b>	GND CON <b>121.7 336.45</b>	CLNC DEL <b>121.2 357.4</b>	ASR/PAR
--------------------------	---	--	--------------------------------	--------------------------------	---------

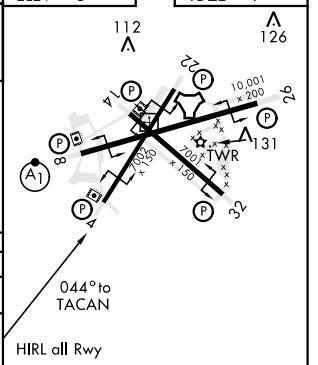
Short intermediate (5 NM) recommend early configuration.

CAUTION:  
Balloon with strobe light  
on unmarked cable to  
14,000 in R-2916.



EMERG SAFE ALT 100 NM 15,000

	ELEV 6		TDZE 4	
	PANDA R-252 11	SEBLE R-224 11	OTABE 6	DEPAC NQX R-224 3
	4000 1600	1600	1600	640
	3.04 TCH 35	11 Arc	11 Arc	7
CATEGORY	A	B	C	D
S-4		340-1	336 (400-1)	
CIRCLING	460-1 454 (500-1)	500-1 494 (500-1)	500-1½ 494 (500-1½)	560-2 554 (600-2)



# TACAN RWY 4

SE-3, 15 JUL 2021 to 12 AUG 2021

SE-3, 15 JUL 2021 to 12 AUG 2021