

KEY WEST, FLORIDA

# VOR/DME RWY 26

EYW VORTAC <b>113.5</b> Chan <b>82</b>	APCH CRS <b>270°</b>	Rwy ldg <b>10,001</b> TDZE <b>6</b> Arprt Elev <b>6</b>
--	-------------------------	---

AL-214 [USN]

KEY WEST NAS (BOCA CHICA FLD) (KNQX)

† MISSED APPROACH: Climbing left turn to 1600 to intercept EYW R-090 to CANIN and hold.

ATIS ★ <b>307.025</b>	NAVY KEY WEST APP CON <b>124.025 313.7</b>	NAVY KEY WEST TOWER ★ <b>118.575 340.25</b>	GND CON <b>121.7 336.45</b>	CLNC DEL <b>121.2 357.4</b>	ASR/PAR
--------------------------	---	--	--------------------------------	--------------------------------	---------

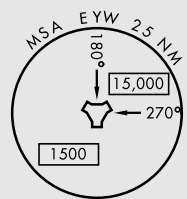
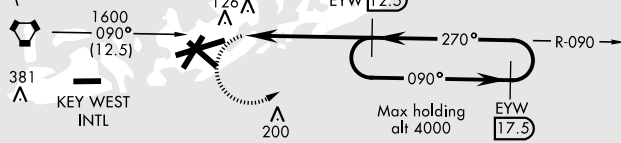
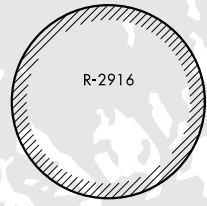
Knots	60	120	180	240	300	360
V/V(fpm)	290	580	870	1160	1450	1740

CAUTION: Final approach course crosses the extended runway centerline 5022' from threshold.

† CAUTION: Missed Approach Minimum Climb Rate to 1600

KEY WEST  
**113.5** EYW Chan 82

CAUTION: Balloon with strobe light on unmarked cable to 14,000 in R-2916.

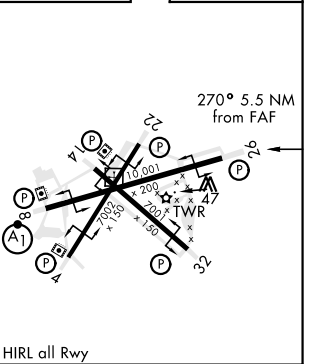
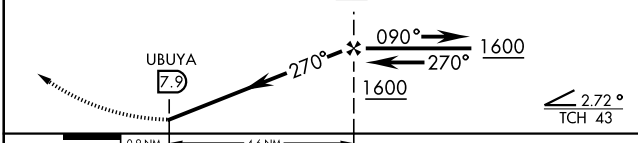


## RADAR REQUIRED

EMEG SAFE ALT 100 NM 15,000

ELEV 6	TDZE 6
--------	--------

1600 EYW R-090 CANIN EYW R-090 **12.5** (IAF) CANIN EYW R-090 **12.5** VGSI and descent angles to coincident. (VGSI angle 3.00/TCH 43)



CATEGORY	A		B		C		D	
S-26	460-1	454 (500-1)	460-1	454 (500-1)	460-1 1/8	454 (500-1 1/8)	460-2	554 (600-2)
CIRCLING	460-1 454 (500-1)	500-1 494 (500-1)	500-1 1/2 494 (500-1 1/2)	500-1 1/2 494 (500-1 1/2)	560-2 554 (600-2)	560-2 554 (600-2)	HIRL all Rwy	

KEY WEST, FLORIDA  
Amdt 3 21MAY20

24°34'N-81°41'W

KEY WEST NAS (BOCA CHICA FLD) (KNQX)

# VOR/DME RWY 26

SE-3, 15 JUL 2021 to 12 AUG 2021

SE-3, 15 JUL 2021 to 12 AUG 2021