

KEY WEST, FLORIDA

VOR/DME or TACAN Z RWY 8

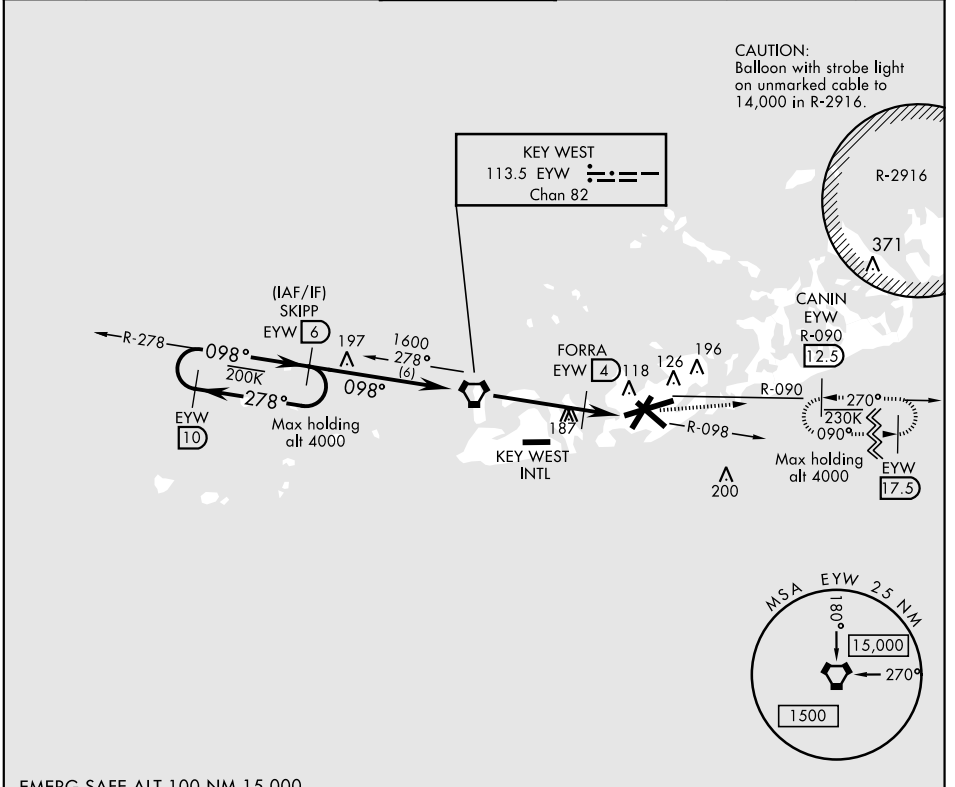
EYW VORTAC 113.5 Chan 82	APCH CRS 098°	Rwy ldg 10,001 TDZE 4 Arprt Elev 6
----------------------------------------------	-------------------------	---------------------------------------------------------------

AL-214 [USN]

KEY WEST NAS (BOCA CHICA FLD) (KNQX)

ALSIF-1  MISSED APPROACH: Climbing left turn to 1600 to intercept EYW R-090 to CANIN and hold.

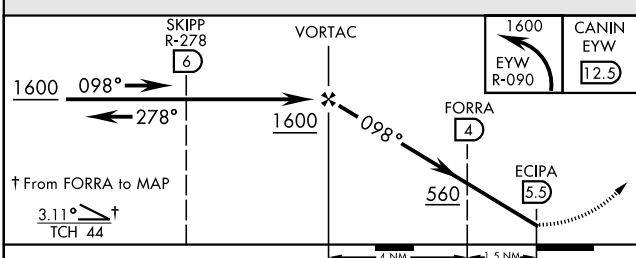
ATIS ★ 307.025	NAVY KEY WEST APP CON 124.025 313.7	NAVY KEY WEST TOWER ★ 118.575 340.25	GND CON 121.7 336.45	CLNC DEL 121.2 357.4	ASR/PAR
--------------------------	-----------------------------------------------	------------------------------------------------	--------------------------------	--------------------------------	---------



SE-3, 15 JUL 2021 to 12 AUG 2021

SE-3, 15 JUL 2021 to 12 AUG 2021

EMERG SAFE ALT 100 NM 15,000



ELEV 6	TDZE 4
--------	--------

098° 5.5 NM from FAF

HIRL all Rwy

CATEGORY	A	B	C	D
S-8	440-1 436 (500-1)		440-1 ¼ 436 (500-1 ¼)	
CIRCLING	460-1	500-1	500-1 ½	560-2
	454 (500-1)	494 (500-1)	494 (500-1 ½)	554 (600-2)

KEY WEST, FLORIDA
Amdt 3 21MAY20

24°34'N-81°41'W KEY WEST NAS (BOCA CHICA FLD) (KNQX)

VOR/DME or TACAN Z RWY 8