

(SXC8.SXC) 19339

CATALINA EIGHT DEPARTURE

AL-237 (FAA)

LOS ANGELES INTL (LAX)
LOS ANGELES, CALIFORNIA

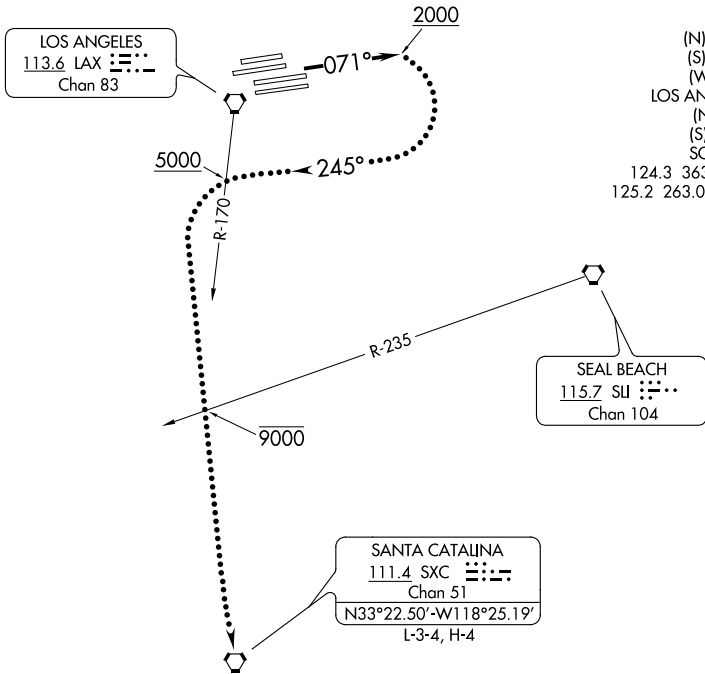
**TOP ALTITUDE:
ASSIGNED BY ATC**

D-ATIS DEP
135.65
CLNC DEL
120.35 327.0
CPDLC
GND CON

(N) 121.65 327.0
(S) 121.75 327.0
(W) 121.4 327.0

LOS ANGELES TOWER
(N) 133.9 239.3
(S) 120.95 379.1

SOCAL DEP CON
124.3 363.2 (045°-224°)
125.2 263.025 (225°-044°)



TAKEOFF MINIMUMS

Rwys 24L/R, 25L/R: NA-Operational.
Rwys 6L/R, 7L/R: Standard.

NOTE: RADAR required.

NOTE: This is a RADAR vector departure to SXC VORTAC. Route depicted is a lost communication procedure only.

NOTE: Chart not to scale.



DEPARTURE ROUTE DESCRIPTION

TAKEOFF RUNWAYS 6L/R, 7L/R: Climb heading 071° for vectors to SXC VORTAC. Then on (assigned route). All aircraft expect further clearance to filed altitude 5 minutes after departure.

LOST COMMUNICATIONS:

TAKEOFF RUNWAYS 6L/R, 7L/R: If not in contact with Departure Control after reaching 2000', turn right heading 245°. Cross LAX R-170 at or above 5000', then turn left and proceed direct SXC VORTAC. Cross SLI R-235 at or below 9000'.

CATALINA EIGHT DEPARTURE

(SXC8.SXC) 17AUG17

LOS ANGELES, CALIFORNIA
LOS ANGELES INTL (LAX)

SW-3, 15 JUL 2021 to 12 AUG 2021

SW-3, 15 JUL 2021 to 12 AUG 2021