

LOC/DME I-HQ B	APP CRS	Rwy Idg	24L	24R
<b>111.7</b>	<b>251°</b>	<b>9483</b>	<b>8926</b>	
Chan <b>54</b>		TDZE	<b>123</b>	<b>122</b>
		Apt Elev	<b>128</b>	<b>128</b>

# ILS or LOC RWY 24L

## LOS ANGELES INTL (LAX)

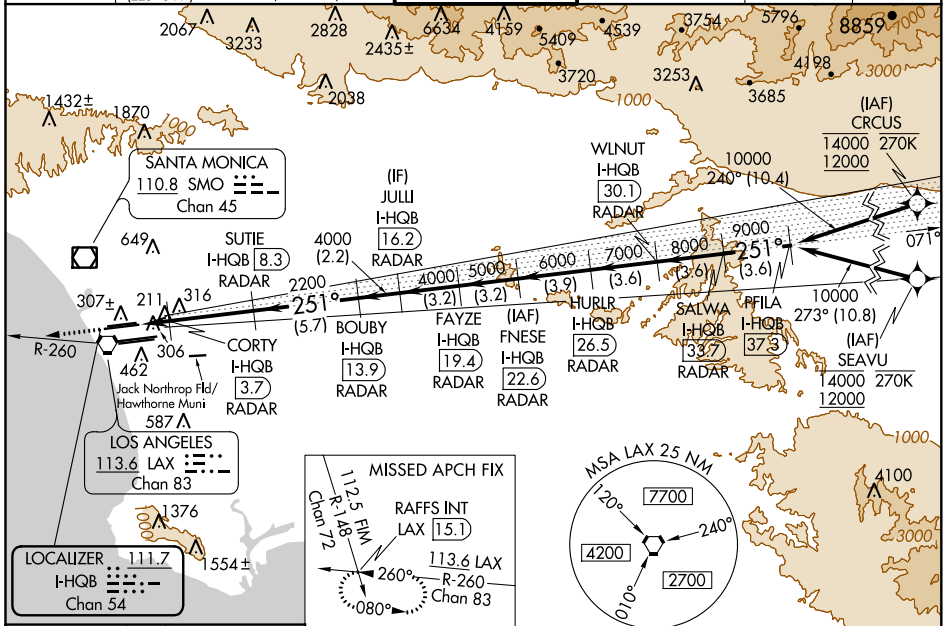
RNAV 1-GPS or RADAR required for procedure entry. DME or RADAR required.  
 From CRCLUS: RNAV 1-GPS required. From SEAVU: RNAV 1-GPS required.

Simultaneous approach authorized with HHR. Inop table does not apply to Sidestep Rwy 24R Cat A and B. Simultaneous approach authorized. LOC procedure NA during simultaneous operations with HHR LOC RWY 25. For inop ALS, increase Sidestep 24R Cat C visibility to 1½SM. For inop ALS, increase S-LOC 24L Cat C/D visibility to RVR 5500. #RVR 1800 authorized with use of FD or AP or HUD to DA.



**MISSED APPROACH:**  
 Climb to 2000 on heading 251° and LAX VORTAC R-260 to RAFFS INT/LAX 15.1 DME and hold.

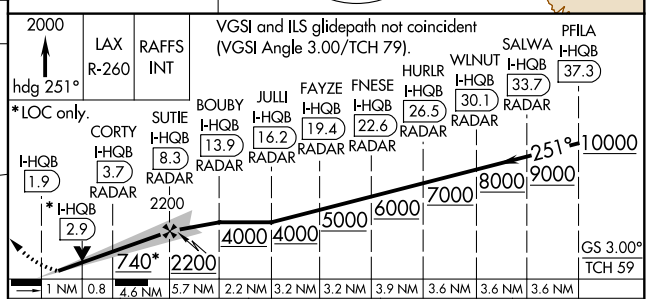
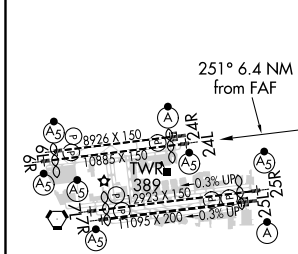
D-ATIS ARR <b>133.8</b> DEP <b>135.65</b>	SOCAL APP CON <b>124.3 363.2</b> (APCH FM WEST) <b>124.5 235.975</b> (225°-044°)	<b>124.9 269.0</b> (090°-224°) <b>128.5 360.7</b> (045°-089°)	<b>LOS ANGELES TOWER</b> <b>N 133.9 239.3</b> <b>S 120.95 379.1</b>	<b>GND CON</b> <b>N 121.65 327.0</b> <b>S 121.75 327.0</b> <b>W 121.4 327.0</b>	<b>CLNC DEL</b> <b>120.35</b> <b>327.0</b>	CPDLC
---	--	--	---	--	--	-------



SW-3, 15 JUL 2021 to 12 AUG 2021

SW-3, 15 JUL 2021 to 12 AUG 2021

ELEV 128	<b>D</b>	TDZE 24L 123
		TDZE 24R 122



TDZ/CL Rwy 6R, 7L, 24R, and 25L HIRL all Rwy's	FAF to MAP 6.4 NM	251° 6.4 NM from FAF			
Knots	60	90	120	150	180
Min:Sec	6:24	4:16	3:12	2:34	2:08
CATEGORY	A		B		D
S-ILS 24L#	323/24		200 (200-½)		
S-LOC 24L	500/24 377 (400-½)		500/35		377 (400-¾)
SIDESTEP 24R	500/55 378 (400-1)		500-1½ 378 (400-1½)		