

LOC/DME I-OSS 108.5 Chan 22	APP CRS 251°	Rwy Idg TDZE Apt Elev	24R 8926 122 128	24L 9483 123 128
---	------------------------	-----------------------------	--	--

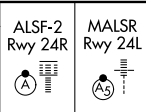
ILS or LOC RWY 24R

LOS ANGELES INTL (LAX)

From CRCLUS, SEAVU: RNAV 1-GPS required. DME or RADAR required.

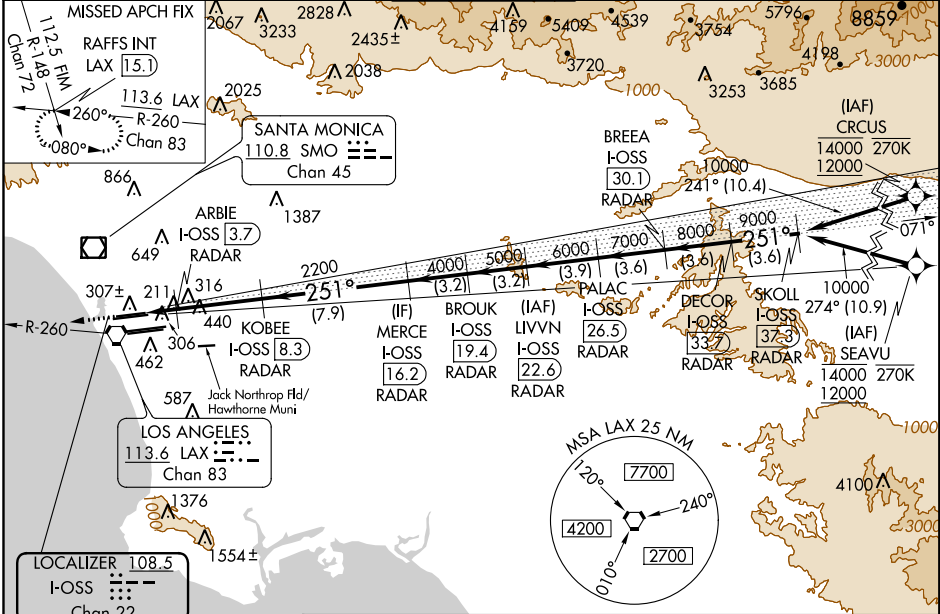
Simultaneous approach authorized with HHR. LOC procedure NA during simultaneous operations with HHR LOC RWY 25.

Simultaneous approach authorized. For inset ALS, increase S-LOC 24R Cat C/D visibility to RVR 5500.



MISSED APPROACH: Climb to 2000 on heading 251° and LAX VORTAC R-260 to RAFFS INT/LAX 15.1 DME and hold.

D-ATIS ARR 133.8 DEP 135.65	SOCAL APP CON 124.3 363.2 124.5 235.975 (225°-044°)	124.9 269.0 (090°-224°)	269.0 (045°-089°)	LOS ANGELES TOWER N 133.9 239.3 S 120.95 379.1	GND CON N 121.65 327.0 S 121.75 327.0 W 121.4 327.0	CLNC DEL 120.35 327.0	CPDLC
---	--	----------------------------	----------------------	--	---	---	-------



SW-3, 15 JUL 2021 to 12 AUG 2021

SW-3, 15 JUL 2021 to 12 AUG 2021

ELEV 128	TDZE 24R 122	TDZE 24L 123	hdg 251°	LAX R-260	RAFFS INT	VGSI and ILS glidepath not coincident (VGSI Angle 3.00/TCH 73).	SKOLL I-OSS 37.3	DECOR I-OSS 37.3	BREEA I-OSS 30.1	PALAC I-OSS 26.5	LIVVN I-OSS 22.6	BROUK I-OSS 19.4	MERCE I-OSS 16.2	KOBEE I-OSS 8.3	ARBIE I-OSS 3.7				
TDZ/CL Rwys 6R, 7L, 24R, and 25L				HRL all Rwys				FAF to MAP 6.4 NM				Knots							
60				90				120				150				180			
Min:Sec 6:24				4:16				3:12				2:34				2:08			
S-ILS 24R				322/18				200 (200-½)											
S-LOC 24R				480/24				358 (400-½)				480/30 358 (400-¾)							
SIDESTEP 24L				500/55				377 (400-1)				500-1½ 377 (400-1½)							