

LOC/DME I-LAX 109.9 Chan 36	APP CRS 251°	Rwy Idg TDZE Apt Elev	25L 11095 104 128	25R 11134 104 128
--	------------------------	-----------------------------	---	---

ILS or LOC RWY 25L

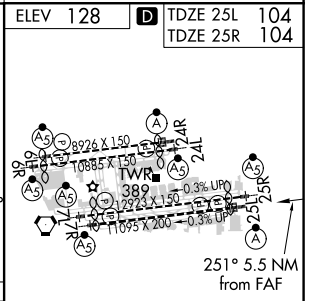
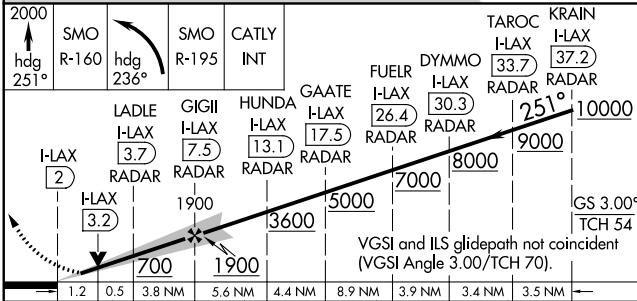
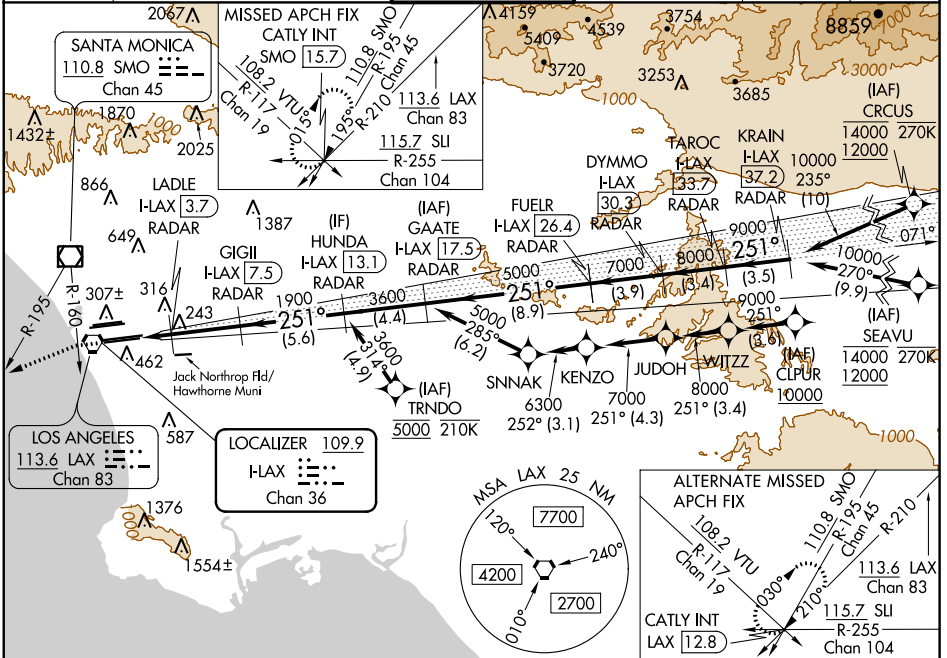
LOS ANGELES INTL (LAX)

DME or RADAR required. From CLPUR, CRCUS, SEAVU, TRNDO: RNAV 1-GPS required.

⚠ Simultaneous approach authorized. Simultaneous approach authorized with HHR. LOC procedure NA during simultaneous operations with HHR LOC RWY 25.

ALSIF-2L Rwy 25L	MALSR Rwy 25R	MISSED APPROACH: Climb to 2000 on heading 251° until crossing the SMO R-160, then left turn on heading 236° and on the SMO R-195 to CATLY INT/ SMO 15.7 DME and hold.
------------------	---------------	---

D-ATIS ARR 133.8 DEP 135.65	SOCAL APP CON 124.3 363.2 (APCH FM WEST) 124.5 235.975 (225°-044°)	LOS ANGELES TOWER N 133.9 239.3 S 120.95 379.1	GND CON N 121.65 327.0 S 121.75 327.0 W 121.4 327.0	CLNC DEL 120.35 327.0	CPDLC
---	--	--	---	---	-------



ELEV 128	TDZE 25L 104	TDZE 25R 104
TDZ/CL Rwy's 6R, 7L, 24R, and 25L HIRL all Rwy's		
FAF to MAP 5.5 NM		
Knots 60 90 120 150 180 Min:Sec 5:30 3:40 2:45 2:12 1:50		

SW-3, 15 JUL 2021 to 12 AUG 2021

SW-3, 15 JUL 2021 to 12 AUG 2021