

LOC/DME I-MKZ 109.9 Chan 36	APP CRS 071°	Rwy Idg 7R 11095 11259 7L 11095 11259
		TDZE 128 128
		Apt Elev 128 128

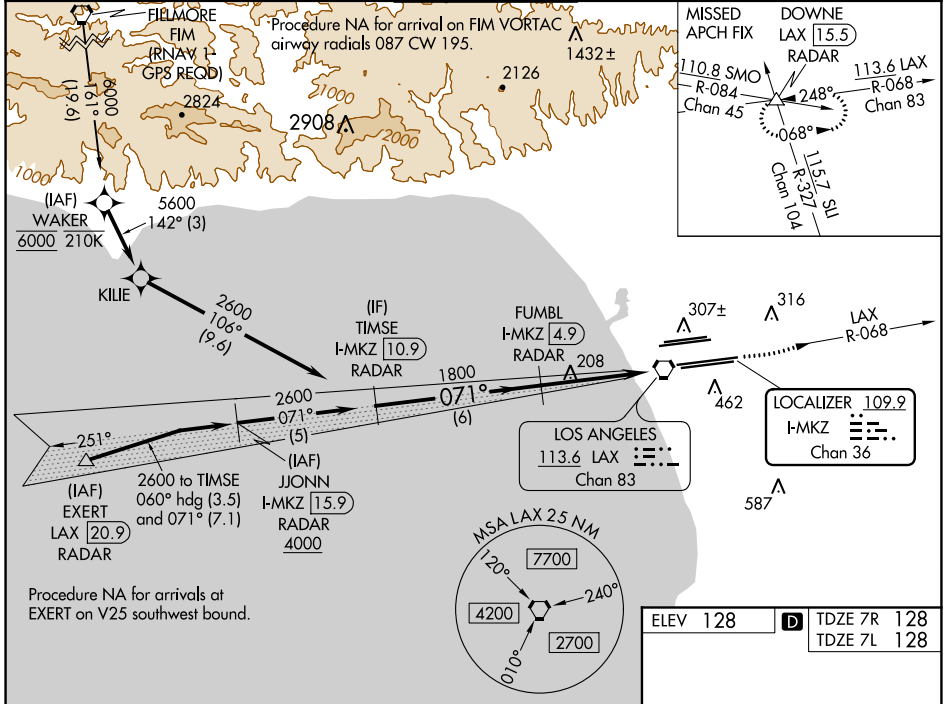
ILS or LOC RWY 7R

LOS ANGELES INTL (LAX)

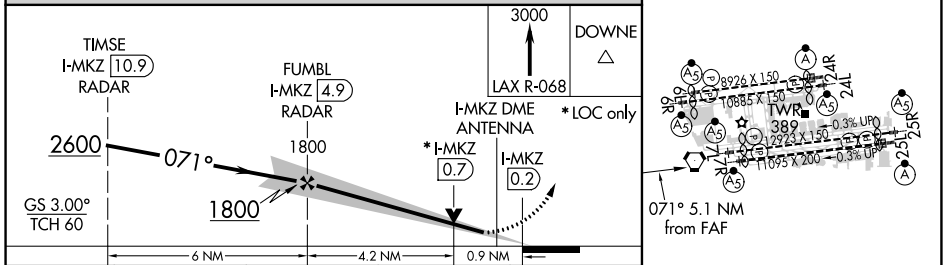
Simultaneous approach authorized. DME or RADAR required. Inop table does not apply to Sidestep Rwy 7L Cats A and B. # RVR 1800 authorized with use of FD or AP or HUD to DA.

MALSR Rwy 7R	MALSR Rwy 7L	MISSED APPROACH: Climb to 3000 on LAX VORTAC R-068 to DOWNNE INT/ LAX 15.5 DME/RADAR and hold.
--------------	--------------	--

D-ATIS ARR 133.8 DEP 135.65	SOCAL APP CON 124.3 363.2 (APCH FM WEST) 124.5 235.975 (225°-044°)	124.9 269.0 (090°-224°) 128.5 360.7 (045°-089°)	LOS ANGELES TOWER N 133.9 239.3 S 120.95 379.1	GND CON N 121.65 327.0 S 121.75 327.0 W 121.4 327.0	CLNC DEL 120.35 327.0	CPDLC
---	--	--	--	---	---	-------



Procedure NA for arrivals at EXERT on V25 southwest bound.



CATEGORY	A	B	C	D
S-ILS 7R#	328/24 200 (200-½)			
S-LOC 7R	460/24	332 (400-½)	460/26	332 (400-½)
SIDESTEP 7L	520/55 392 (400-1)			520-1½ 392 (400-1½)

ELEV 128	TDZE 7R 128
	TDZE 7L 128

TDZ/CL Rwys 6R, 7L, 24R, and 25L
HIRL all Rwys

FAF to MAP 5.1 NM

Knots	60	90	120	150	180
Min:Sec	5:06	3:24	2:33	2:02	1:42

SW-3, 15 JUL 2021 to 12 AUG 2021

SW-3, 15 JUL 2021 to 12 AUG 2021