

LAXX ONE DEPARTURE

AL-237 (FAA)

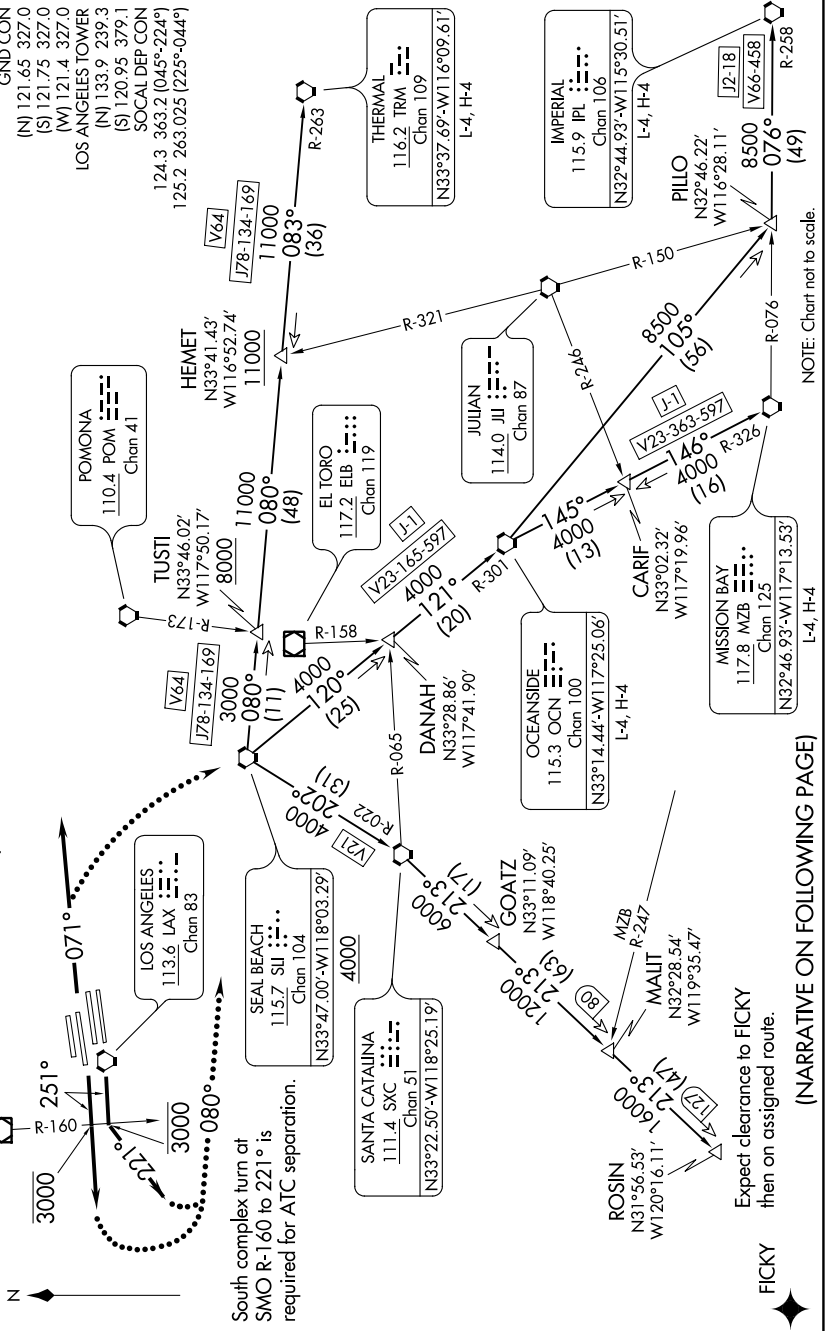
SW-3, 15 JUL 2021 to 12 AUG 2021

**TOP ALTITUDE:
ASSIGNED BY ATC**

TAKEOFF MINIMUMS
Rwy 6L/R, 7L/R, 24L/R, 25L/R: Standard.

NOTE: This departure is for
turboprop aircraft only.
NOTE: RADAR and DME required.

D-ATIS DEP
135.65
CUNCDL
120.35 327.0
CPDLC
GND CON
(N) 121.65 327.0
(S) 121.75 327.0
(W) 121.4 327.0
LOS ANGELES TOWER
(N) 133.9 239.3
(S) 120.95 379.1
SOCAL DEP CON
124.3 363.2 (045°-224°)
125.2 263.025 (225°-044°)



(NARRATIVE ON FOLLOWING PAGE)

Expect clearance to FICKY
then on assigned route.

FICKY

LAXX ONE DEPARTURE