

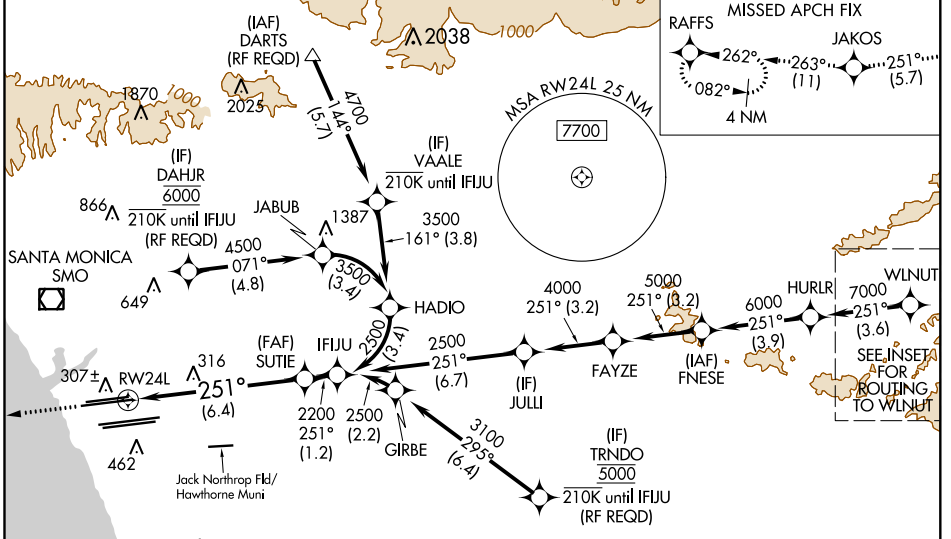
APP CRS	Rwy Idg	9483
251°	TDZE	123
	Apt Elev	128

RNAV (RNP) Z RWY 24L

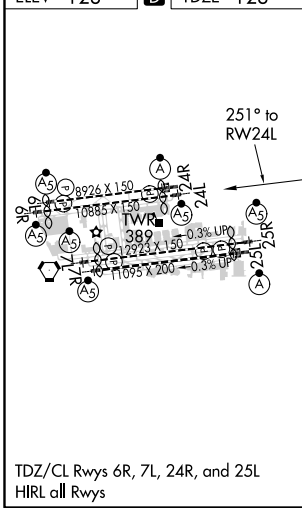
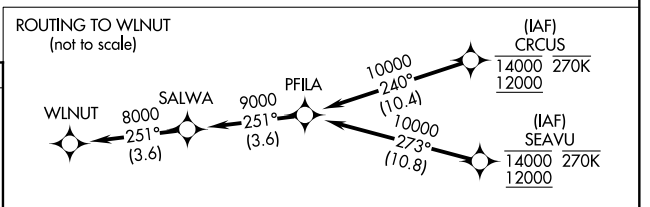
LOS ANGELES INTL (LAX)

RNP AR APCH.	MALSRS	MISSED APPROACH: Climb to 2000 on track 251° to JAKOS and track 263° to RAFFS and hold.
<p>Simultaneous approach authorized. Simultaneous approach authorized with HHR. For uncompensated Baro-VNAV systems, procedure NA below 5°C or above 54°C. For inop ALS, increase RNP 0.15 all Cnts visibility to 1 3/8 SM.</p>		

D-ATIS	SOCAL APP CON	LOS ANGELES TOWER	GND CON	CLNC DEL	CPDLC
ARR 133.8	124.3 363.2 (APCH FM WEST)	124.9 269.0 (090°-224°)	N 133.9 239.3 S 120.95 379.1	N 121.65 327.0 S 121.75 327.0 W 121.4 327.0	120.35 327.0
DEP 135.65	124.5 235.975 (225°-044°)	128.5 360.7 (045°-089°)			



ELEV 128	D	TDZE 123
-----------------	----------	-----------------



2000	JAKOS	fr 263°	RAFFS	See planview for multiple IF locations.	IFJU
tr 251°					
<p>VGSI and RNAV glidepath not coincident (VGSI Angle 3.00/TCH 79).</p>					
RWY 24L		SUTIE 2200		IFJU 2500	
		2200		GP 3.00°	
		6.4 NM		1.2 NM	
				TCH 59	

CATEGORY	A	B	C	D
RNP 0.15 DA		545/35	422 (500-5%)	
RNP 0.30 DA		592/45	469 (500-7%)	

SW-3, 15 JUL 2021 to 12 AUG 2021

SW-3, 15 JUL 2021 to 12 AUG 2021

AUTHORIZATION REQUIRED