

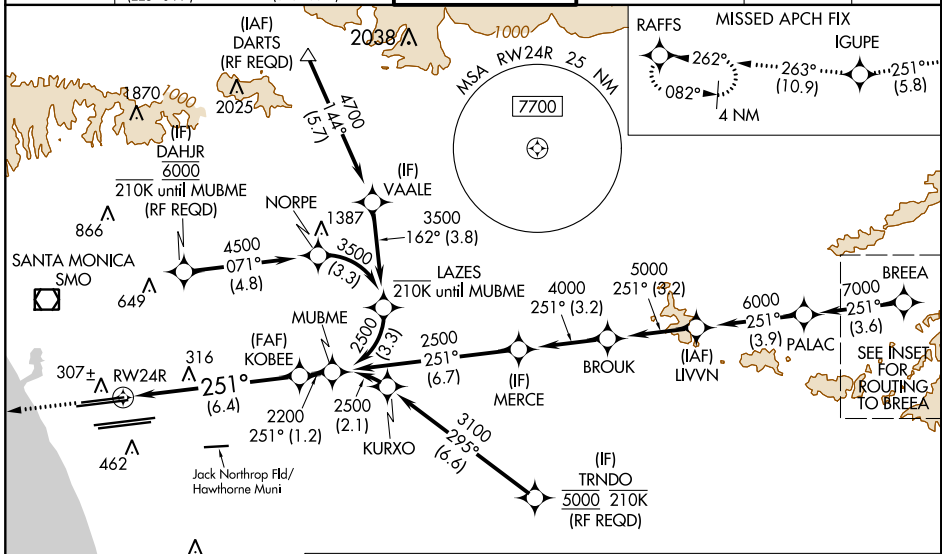
| | | |
|-------------|----------|-------------|
| APP CRS | Rwy Idg | 8926 |
| 251° | TDZE | 122 |
| | Apt Elev | 128 |

RNAV (RNP) Z RWY 24R

LOS ANGELES INTL (LAX)

| | | |
|--------------|--|--|
| RNP AR APCH. | <p>⚠ Simultaneous approach authorized with HHR. For uncompensated Baro-VNAV systems, procedure NA below 5°C or above 54°C. For inop ALS, increase RNP 0.15 all Cats visibility to RVR 6000 and RNP 0.30 all Cats visibility to 1½ SM. Simultaneous approach authorized.</p> | <p>ALSF-2</p> <p>MISSED APPROACH: Climb to 2000 on track 251° to IGUPE and track 263° to RAFFS and hold.</p> |
|--------------|--|--|

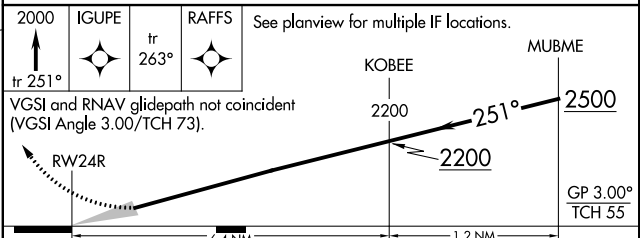
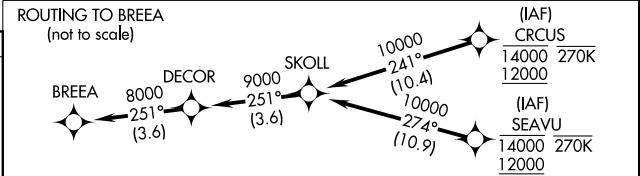
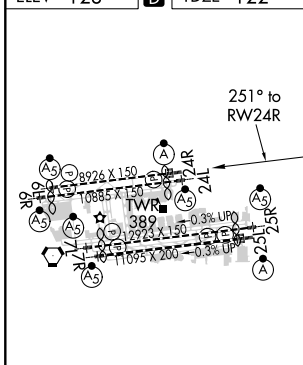
| | | | | | | |
|-------------------|--------------------------------------|-----------------------------------|---|--|-------------------------------|-------|
| D-ATIS | SOCAL APP CON | | LOS ANGELES TOWER | GND CON | CLNC DEL | CPDLC |
| ARR 133.8 | 124.3 363.2 (APCH FM WEST) | 124.9 269.0 (090°-224°) | N 133.9 239.3 S 120.95 379.1 | N 121.65 327.0 S 121.75 327.0 W 121.4 327.0 | 120.35 327.0 | |
| DEF 135.65 | 124.5 235.975 (225°-044°) | 128.5 360.7 (045°-089°) | | | | |



SW-3, 15 JUL 2021 to 12 AUG 2021

SW-3, 15 JUL 2021 to 12 AUG 2021

| | | |
|-----------------|----------|-----------------|
| ELEV 128 | D | TDZE 122 |
|-----------------|----------|-----------------|



| | | | | |
|-------------|---|--------|--------------|---|
| CATEGORY | A | B | C | D |
| RNP 0.15 DA | | 484/40 | 362 (400-¾) | |
| RNP 0.30 DA | | 586/60 | 464 (500-1¼) | |

TDZ/CL Rwyrs 6W, 7L, 24R, and 25L
HIRL all Rwyrs

AUTHORIZATION REQUIRED