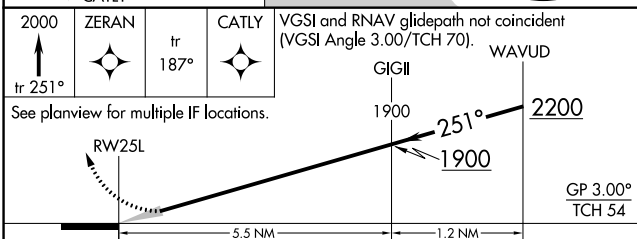
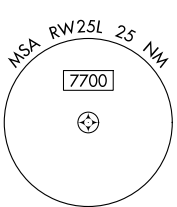
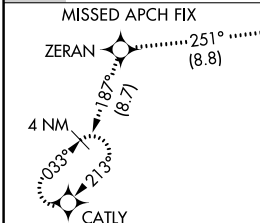
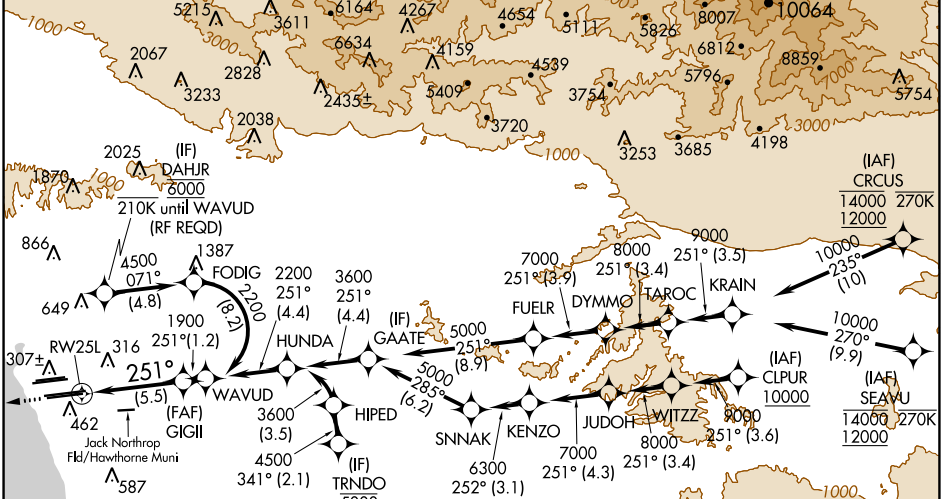


APP CRS	Rwy Idg	11095
251°	TDZE	104
	Apt Elev	128

RNAV (RNP) Z RWY 25L

LOS ANGELES INTL (LAX)

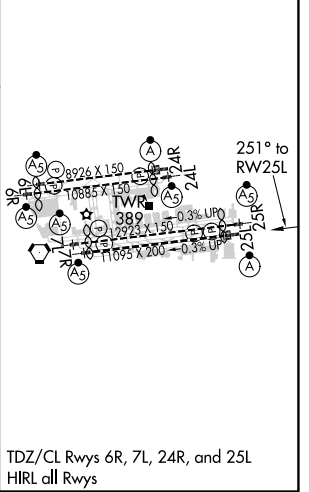
RNP AR APCH.		GPS required. For uncompensated Baro-VNAV systems, procedure NA below 5°C or above 54°C. Simultaneous approach authorized with HHR.		ALSF-2	MISSED APPROACH: Climb to 2000 on track 251° to ZERAN and on track 187° to CATLY and hold.		
D-ATIS	ARR 133.8	DEP 135.65	SOICAL APP CON	LOS ANGELES TOWER	GND CON	CLNC DEL	CPDLC
			124.3 363.2 (APCH FM WEST) 124.5 235.975 (225°-044°)	124.9 269.0 (090°-224°) 128.5 360.7 (045°-089°)	N 133.9 239.3 S 120.95 379.1	N 121.65 327.0 S 121.75 327.0 W 121.4 327.0	120.35 327.0



CATEGORY	A	B	C	D
RNP 0.15 DA		445/30	341 (400-5%)	
RNP 0.30 DA		543/50	439 (500-1)	

AUTHORIZATION REQUIRED

ELEV 128	D TDZE 104
----------	-------------------



SW-3, 15 JUL 2021 to 12 AUG 2021

SW-3, 15 JUL 2021 to 12 AUG 2021