

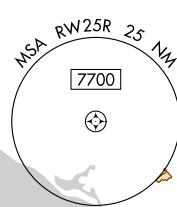
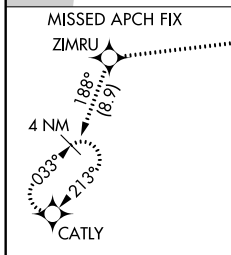
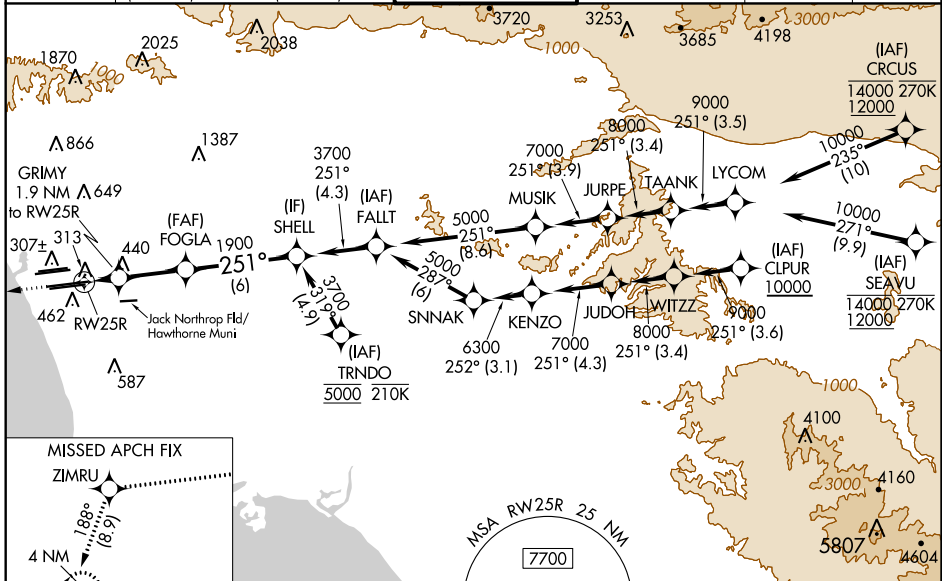
WAAS CH 49007 W25B	APP CRS 251°	Rwy Idg 11134 TDZE 104 Apt Elev 128
--	------------------------	--

RNAV (GPS) Y RWY 25R

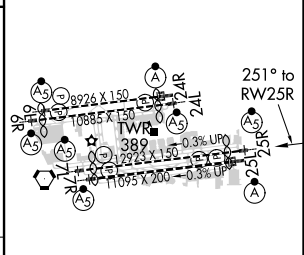
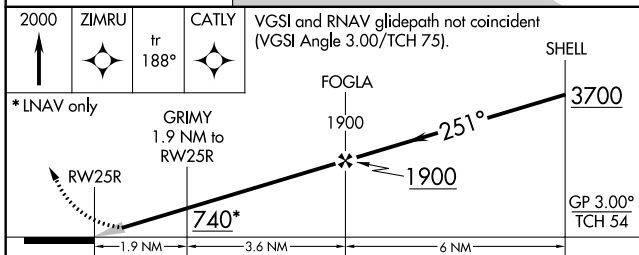
LOS ANGELES INTL (LAX)

RNP APCH.	<p>▼ For uncompensated Baro-VNAV systems, LNAV/VNAV NA below 5°C or above 54°C. Simultaneous approach authorized. Simultaneous approach authorized with HHR. LNAV procedure NA during simultaneous operations. Use of FD or AP required during simultaneous operations. # RVR 1800 authorized with use of FD or AP or HUD to DA.</p>	<p>MALSR</p>	<p>MISSED APPROACH: Climb to 2000 direct ZIMRU and track 188° to CATLY and hold.</p>
-----------	--	--------------	--

D-ATIS ARR 133.8 DEP 135.65	SOCAL APP CON (APCH FM WEST) 124.3 363.2 (225°-044°)	124.9 269.0 (090°-224°)	269.0 (045°-089°)	LOS ANGELES TOWER N 133.9 239.3 S 120.95 379.1	GND CON N 121.65 327.0 S 121.75 327.0 W 121.4 327.0	CLNC DEL 120.35 327.0	CPDLC
---	--	-----------------------------------	-----------------------------	--	---	---	-------



ELEV 128	D TDZE 104
----------	-------------------



CATEGORY	A	B	C	D
LPV DA#		304/24	200 (200-1/2)	
LNAV/VNAV DA		578/60	474 (500-1/4)	
LNAV MDA	640/24	536 (600-1/2)	640/55	536 (600-1)

TDZ/CL Rwsy 6R, 7L, 24R, and 25L HIRL all Rwsy

SW-3, 15 JUL 2021 to 12 AUG 2021

SW-3, 15 JUL 2021 to 12 AUG 2021