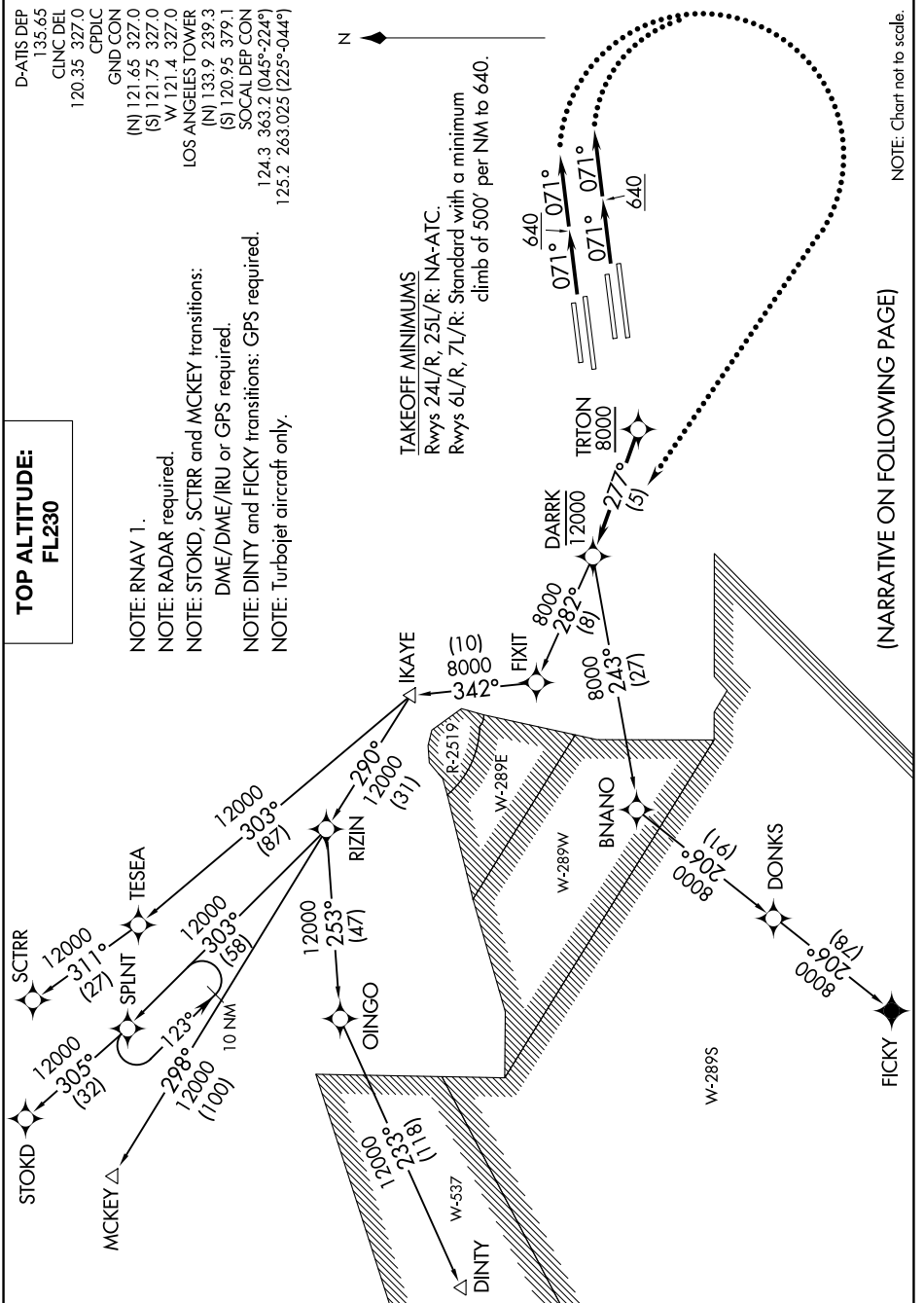


# TRTON TWO DEPARTURE (RNAV)

AL-237 (FAA)

LOS ANGELES INTL (LAX)  
LOS ANGELES, CALIFORNIA

SW-3, 15 JUL 2021 to 12 AUG 2021



**TOP ALTITUDE:**  
**FL230**

NOTE: RNAV 1.

NOTE: RADAR required.

NOTE: STOKD, SCITRR and MCKEY transitions:

DME/DME/IRU or GPS required.

NOTE: DINTY and FICKY transitions: GPS required.

NOTE: Turboprop aircraft only.

### TAKEOFF MINIMUMS

Rwys 24L/R, 25L/R: NA-ATC.

Rwys 6L/R, 7L/R: Standard with a minimum

climb of 500' per NM to 640.

(NARRATIVE ON FOLLOWING PAGE)

NOTE: Chart not to scale.

# TRTON TWO DEPARTURE (RNAV)

SW-3, 15 JUL 2021 to 12 AUG 2021