


|                           |                        |                        |
|---------------------------|------------------------|------------------------|
| LOC I-EXW<br><b>108.3</b> | APP CRS<br><b>259°</b> | Rwy Idg<br><b>7815</b> |
|                           |                        | TDZE<br><b>548</b>     |
|                           |                        | Apt Elev<br><b>565</b> |

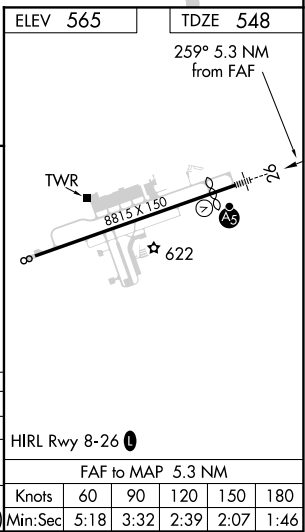
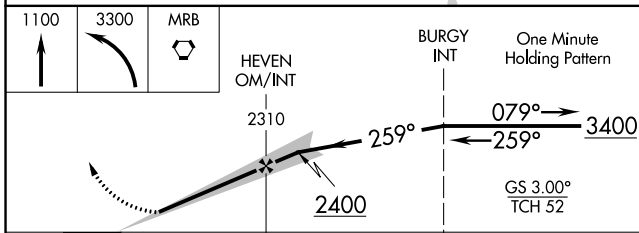
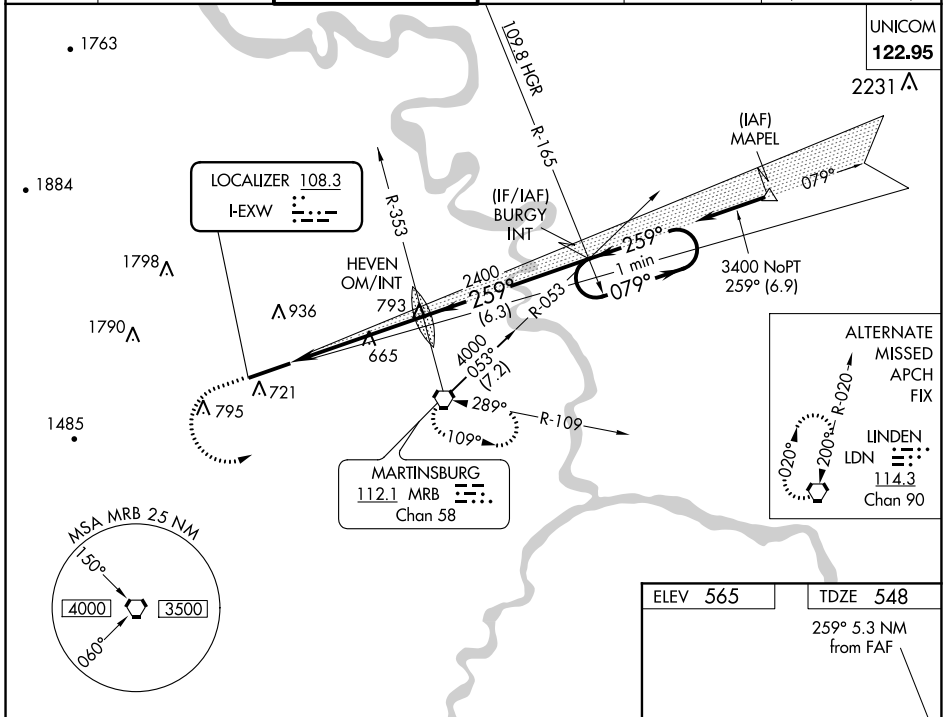
# ILS or LOC RWY 26

EASTERN WV RGNL/SHEPHERD FIELD (MRB)

**⚠** For inoperative MALS/R, increase S-ILS 26 Cat E visibility to ¾ mile and S-LOC 26 Cat E visibility to 1¼ mile. When local altimeter setting not received, use Hagerstown altimeter setting and increase all DA 70 feet and all MDA 80 feet; increase S-LOC 26 Cat C, D, E and Circling Cat C and D visibility ¼ mile. For inoperative MALS/R when using Hagerstown altimeter setting increase S-ILS 26 visibility all Cats to 1 mile and S-LOC 26 Cat E visibility to 1½ mile.

**MALS/R**  
  
**MISSED APPROACH:** Climb to 1100 then climbing left turn to 3300 direct MRB VORTAC and hold, continue climb-in-hold to 3300.

|                        |   |  |                                |                                 |   |
|------------------------|---|--|--------------------------------|---------------------------------|---|
| ASOS<br><b>119.925</b> | POTOMAC APP CON<br><b>126.825 239.025</b> | MARTINSBURG TOWER *<br><b>124.3 (CTAF) 233.7</b> | GND CON<br><b>121.8 257.65</b> | CLNC DEL<br><b>121.8 257.65</b> | CLNC DEL<br><b>132.075 269.075</b><br>(When twr closed) |
|------------------------|---|--|--------------------------------|---------------------------------|---|



|                 |                       |                       |                       |                         |                         |
|-----------------|-----------------------|-----------------------|-----------------------|-------------------------|-------------------------|
| CATEGORY        | A                     | B                     | C                     | D                       | E                       |
| S-ILS 26        | 748-½ 200 (200-½)     |                       |                       |                         |                         |
| S-LOC 26        | 920-½ 372 (400-½)     |                       | 920-¾ 372 (400-¾)     |                         |                         |
| <b>CIRCLING</b> | 1100-1<br>535 (600-1) | 1240-1<br>675 (700-1) | 1240-2<br>675 (700-2) | 1260-2¼<br>695 (700-2¼) | 2140-3<br>1575 (1600-3) |

NE-4, 15 JUL 2021 to 12 AUG 2021

NE-4, 15 JUL 2021 to 12 AUG 2021