


LOC/DME I-KQ	APP CRS	Rwy Idg	9013
111.35	191°	TDZE	293
Chan 50 (Y)		Apt Elev	298

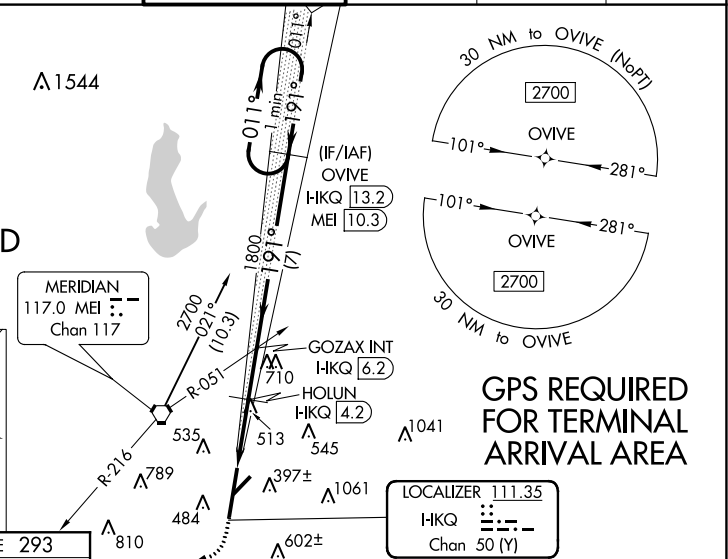
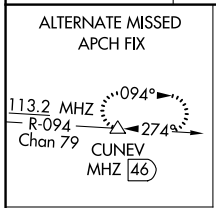
ILS or LOC RWY 19

KEY FLD (MEI)

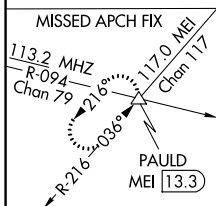
⚠ When local altimeter not received, use Hattiesburg-Laurel Rgnl altimeter setting and increase all DA 138 feet and all MDA 140 feet, increase S-ILS 19 all Cats visibility to RVR 6000, S-LOC 19 Cats C, D, and E visibility to 2 miles, and Circling Cats A/D visibility ¼ mile and Cat C visibility ½ mile; increase HOLUN Fix minimums S-LOC Cats C, D and E to 1½ mile, and Circling Cat C visibility ½ mile, and Cat D visibility ¼ mile. For inop MALSRL, increase S-ILS 19 all Cats visibility to RVR 6000, and S-LOC 19 Cat E to 2 miles; increase HOLUN fix minimums S-LOC 19 Cat E visibility to 1½ mile. For inop MALSRL when using Hattiesburg-Laurel Rgnl altimeter setting, increase S-ILS 19 all Cats visibility to 1½ mile, and S-LOC 19 Cat E to 2½ miles; increase HOLUN Fix minimums S-LOC 19 Cat E visibility to 1¾ mile. Helicopter visibility reduction below RVR 4000 NA. Night landing: Rwy 22 NA. Circling NA southeast of Rwy 1 and 22. VDP NA when using Hattiesburg-Laurel Rgnl altimeter setting.

MALSRL

MISSED APPROACH:
 Climb to 1000 then climbing right turn to 3000 on heading 250° and MEI VORTAC R-216 to PAULD INT/MEI 13.3 DME and hold.

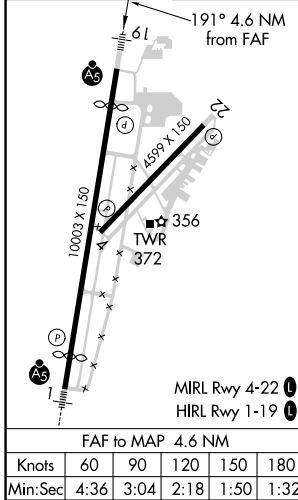
ATIS	MERIDIAN APP CON *	KEY TOWER *	GND CON	CLNC DEL	UNICOM
126.475 291.675	120.5 269.325	133.975 (CTAF) 0 257.8	121.9 348.6	121.9 348.6	122.95



DME REQUIRED



ELEV	298	LOC	D	TDZE	293
------	------------	-----	----------	------	------------



1000	3000	PAULD	VGSI and ILS glidepath not coincident (VGSI Angle 3.00/TCH 69). #1180 when using Hattiesburg-Laurel Rgnl altimeter setting.		
↑	hdg 250°	MEI R-216			
*LOC only.					
HOLUN I-HKQ [4.2]		GOZAX INT I-HKQ [6.2]	OVIVE I-HKQ [13.2]		
*I-HKQ [3]		1800	One Minute Holding Pattern		
HKG [1.7]		#1040	011° → 2700		
1.3 NM		1.2 NM	← 191°		
		2.1 NM	1800		
		7 NM	GS 3.00° TCH 54		
CATEGORY	A	B	C	D	E
S-ILS 19	633/40 340 (400-¾)				
S-LOC 19	1040/40	747 (800-¾)	1040-1¾	747 (800-1¾)	
CIRCLING	1040-1	1040-1¼	1040-2¼	1120-2¾	1120-3
	742 (800-1)	742 (800-1¼)	742 (800-2¼)	822 (900-2¾)	822 (900-3)
HOLUN FIX MINIMUMS					
S-LOC 19	780/40	487 (500-¾)	780/50	487 (500-1)	
CIRCLING	860-1	880-1	960-1¾	1120-2¾	1120-3
	562 (600-1)	582 (600-1)	662 (700-1¾)	822 (900-2¾)	822 (900-3)

SC-4, 15 JUL 2021 to 12 AUG 2021

SC-4, 15 JUL 2021 to 12 AUG 2021