

WAAS CH 42533 W04A	APP CRS 046°	Rwy Idg TDZE 295 Apt Elev 298	4599
--	------------------------	---	-------------

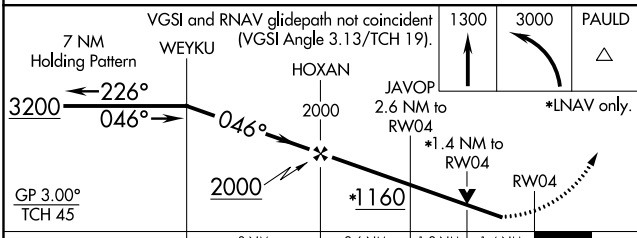
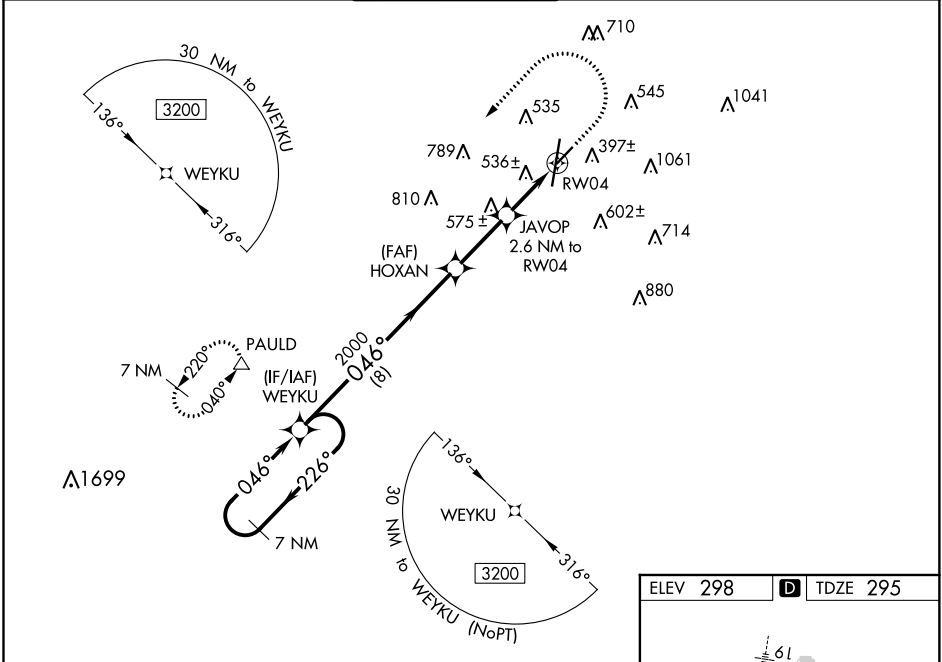
RNAV (GPS) RWY 4

KEY FLD (MEI)

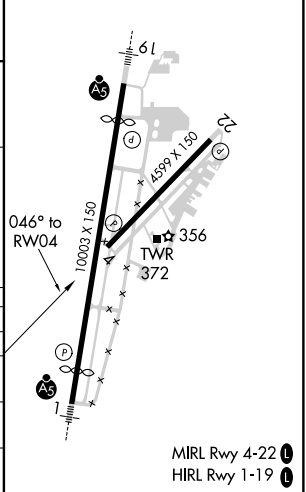
⚠ For uncompensated Baro-VNAV systems, LNAV/VNAV NA below -8°C (18°F) or above 54°C (130°F). Circling NA southeast of Rwy 1 and 22. DME/DME RNP-0.3 NA. When local altimeter setting not received, use Hattiesburg-Laurel Rgnl altimeter setting and increase all DA 138 feet and all MDA 140 feet; increase LPV and LNAV/VNAV all Cats visibilities ½ mile, LNAV Cats C/D visibility ½ mile, and Circling Cat C visibility ½ mile and Cat D visibility ¼ mile. Helicopter visibility reduction below ¾ SM NA. Baro-VNAV and VDP NA with Hattiesburg-Laurel Rgnl altimeter setting. Night landing: Rwy 22 NA.

MISSED APPROACH:
Climb to 1300 then climbing left turn to 3000 direct PAULD and hold.

ATIS 126.475 291.675	MERIDIAN APP CON ★ 120.5 269.325	KEY TOWER ★ 133.975 (CTAF) 0 257.8	GND CON 121.9 348.6	CLNC DEL 121.9 348.6	UNICOM 122.95
--------------------------------	--	--	-------------------------------	--------------------------------	-------------------------



ELEV 298	D TDZE 295
----------	-------------------



CATEGORY	A	B	C	D
LPV DA	576-7/8		281 (300-7/8)	
LNAV/VNAV DA	849-17/8		554 (600-17/8)	
LNAV MDA	800-1 505 (600-1)		800-13/8 505 (600-13/8)	
C CIRCLING	860-1 562 (600-1)	880-1 582 (600-1)	960-13/4 662 (700-13/4)	1120-23/4 822 (900-23/4)

MIRL Rwy 4-22 **Ⓛ**
HIRL Rwy 1-19 **Ⓛ**

SC-4, 15 JUL 2021 to 12 AUG 2021

SC-4, 15 JUL 2021 to 12 AUG 2021