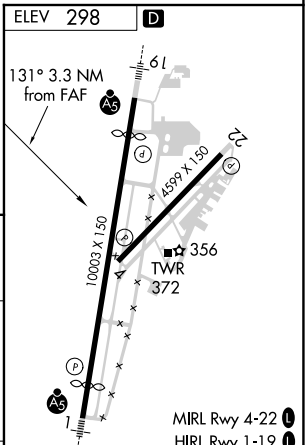
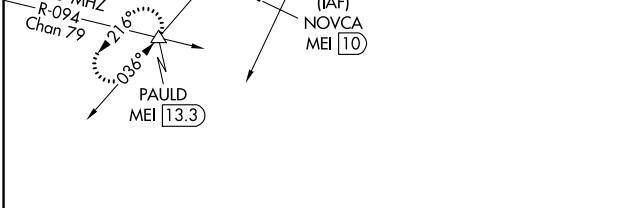
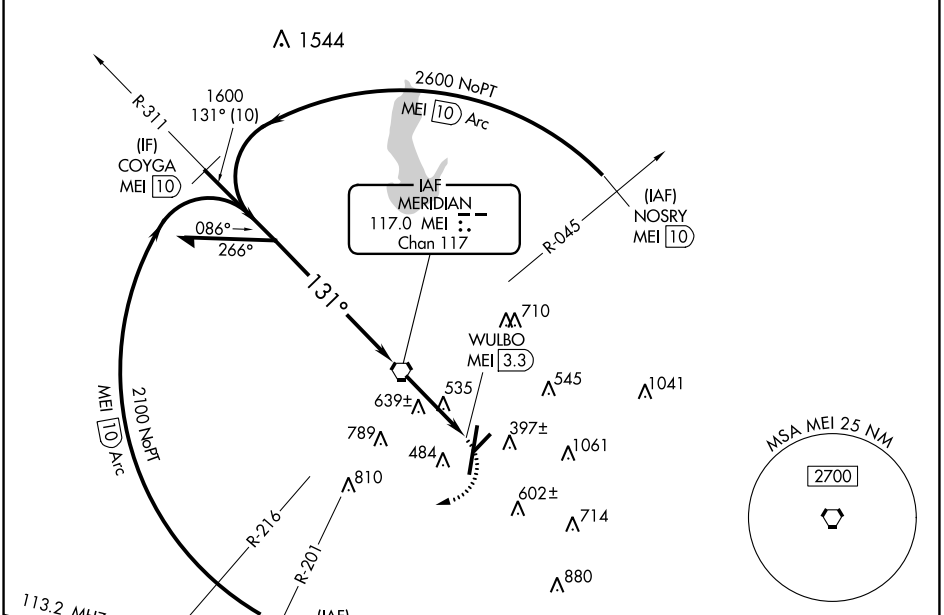


VORTAC MEI <b>117.0</b> Chan <b>117</b>	APP CRS <b>131°</b>	Rwy Idg TDZE Apt Elev	<b>N/A</b> <b>N/A</b> <b>298</b>
---	------------------------	-----------------------------	--

**⚠** Circling to Rwy 22 NA at night. Circling NA southeast of Rws 1 and 22.  
**⚠** When local altimeter setting not received, use Hattiesburg-Laurel Rgnl  
 altimeter setting and increase all MDA 140 feet, increase Cat C visibility  
 ½ mile and Cat D visibility ¼ mile. Procedure turn NA for Cat E.

**MISSED APPROACH:** Climbing right turn to 3000 on heading 260° and MEI R-216 to PAULD INT/MEI 13.3 DME and hold.

ATIS <b>126.475 291.675</b>	MERIDIAN APP CON ★ <b>120.5 269.325</b>	KEY TOWER ★ <b>133.975 (CTAF) 257.8</b>	GND CON <b>121.9 348.6</b>	CLNC DEL <b>121.9 348.6</b>	UNICOM <b>122.95</b>
--------------------------------	--	--	-------------------------------	--------------------------------	-------------------------



Remain within 10 NM	MEI VORTAC	3000	hdg	MEI	PAULD
	2100	6000	260°	R-216	△
	1600				
				WULBO MEI 3.3	
					← 3.3 NM →

CATEGORY	A	B	C	D	E	FAF to MAP 3.3 NM					
CIRCLING	900-1	602 (700-1)	960-1¾	1120-2¾	1120-3	Knots	60	90	120	150	180
			662 (700-1¾)	822 (900-2¾)	822 (900-3)	Min:Sec	3:18	2:12	1:39	1:19	1:06

SC-4, 15 JUL 2021 to 12 AUG 2021

SC-4, 15 JUL 2021 to 12 AUG 2021