

WAAS CH <b>62922</b> <b>W27A</b>	APP CRS <b>273°</b>	Rwy Idg <b>8002</b> TDZE <b>8</b> Apt Elev <b>8</b>
--	------------------------	---

# RNAV (GPS) RWY 27R

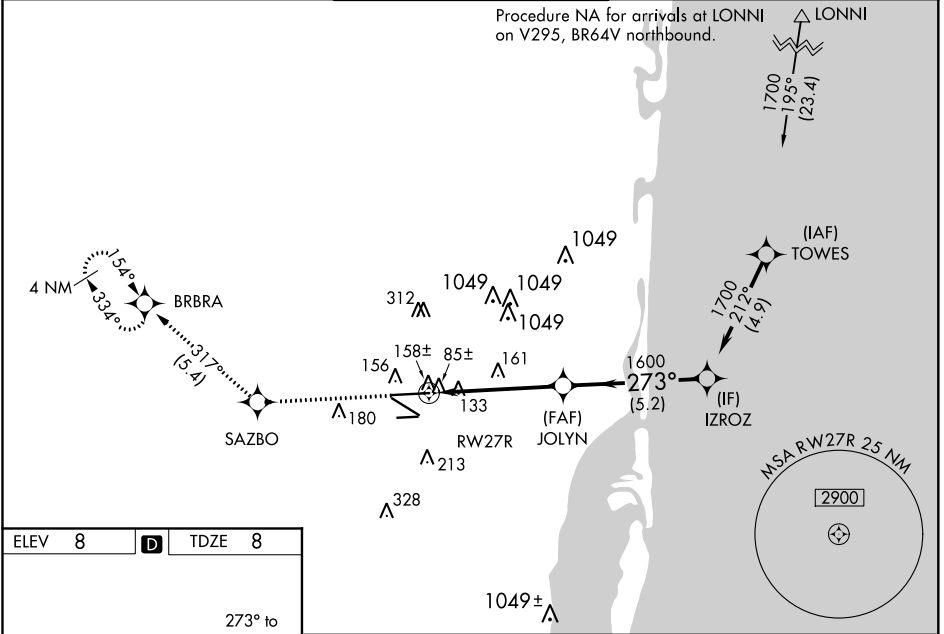
MIAMI-OPA LOCKA EXEC (OPF)

**⚠** Baro-VNAV NA when using Miami Intl altimeter setting. For uncompensated Baro-VNAV systems, LNAV/VNAV NA below 5°C (41°F) or above 54°C (130°F). DME/DME RNP-0.3 NA. When local altimeter setting not received, use Miami Intl altimeter setting and increase all DA/MDA 20 feet. For inop MALS, increase LPV all Cats visibility to 7/8 mile, LNAV/VNAV all Cats to 1 3/8, and LNAV Cats C and D visibility to 1 1/8 mile. Helicopter visibility reduction below 3/4 SM NA.

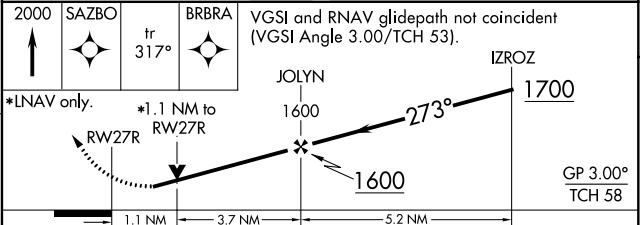
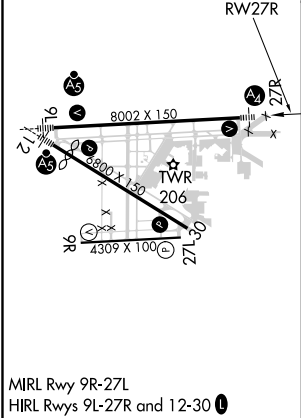
**MALS**  
A2

**MISSED APPROACH:** Climb to 2000 direct SAZBO and on track 317° to BRBRA and hold.

ATIS <b>125.9</b>	MIAMI APP CON <b>128.6 306.975</b>	OPA LOCKA TOWER ★ <b>134.675 (CTAF)</b> <b>📻</b>	GND CON <b>120.025</b>	CLNC DEL <b>119.2</b>
----------------------	---------------------------------------	---	---------------------------	--------------------------



ELEV <b>8</b>	<b>D</b>	TDZE <b>8</b>
---------------	----------	---------------



CATEGORY	A	B	C	D
LPV DA		291-3/4	283 (300-3/4)	
LNAV/VNAV DA		413-1	405 (500-1)	
LNAV MDA	420-3/4	412 (500-3/4)	420-1	412 (500-1)
CIRCLING	540-1	532 (600-1)	540-1 1/2 532 (600-1 1/2)	560-2 552 (600-2)

MIRL Rwy 9R-27L  
HIRL Rwy 9L-27R and 12-30 **📻**

25°54'N-80°17'W

# MIAMI-OPA LOCKA EXEC (OPF) RNAV (GPS) RWY 27R

SE-3, 15 JUL 2021 to 12 AUG 2021

SE-3, 15 JUL 2021 to 12 AUG 2021