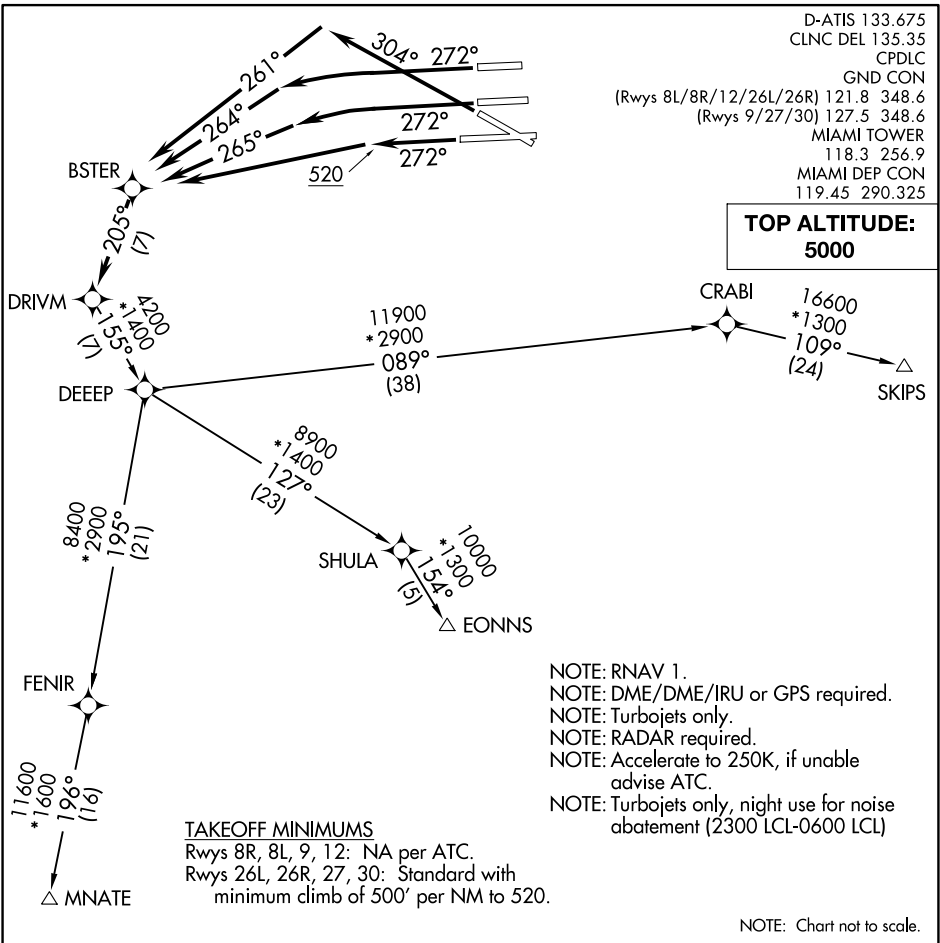


DEEEP TWO DEPARTURE (RNAV)

MIAMI, FLORIDA



D-ATIS 133.675
 CLNC DEL 135.35
 CPDLC
 GND CON
 (Rwys 8L/8R/12/26L/26R) 121.8 348.6
 (Rwys 9/27/30) 127.5 348.6
 MIAMI TOWER
 118.3 256.9
 MIAMI DEP CON
 119.45 290.325

SE-3, 15 JUL 2021 to 12 AUG 2021

SE-3, 15 JUL 2021 to 12 AUG 2021

DEPARTURE ROUTE DESCRIPTION

TAKEOFF RUNWAY 26L: Climb heading 272° to intercept course 265° to BSTER, then on depicted route to DRIVM, thence. . .

TAKEOFF RUNWAY 26R: Climb heading 272° to intercept course 264° to BSTER, then on depicted route to DRIVM, thence. . .

TAKEOFF RUNWAY 27: Climb heading 272° to 520, then direct BSTER, then on depicted route to DRIVM, thence. . .

TAKEOFF RUNWAY 30: Climb heading 304° to intercept course 261° to BSTER, then on depicted route to DRIVM, thence. . .

....via transition or assigned route, maintain 5000 or ATC assigned altitude. Expect further clearance to filed altitude within 10 minutes after departure.

EONNS TRANSITION (DEEEP2.EONNS):

MNATE TRANSITION (DEEEP2.MNATE):

SKIPS TRANSITION (DEEEP2.SKIPS):

DEEEP TWO DEPARTURE (RNAV)

(DEEEP2.DEEP) 30APR15

MIAMI, FLORIDA
MIAMI INTL (MIA)