

LOC/DME I-VIN 109.1 Chan 28	APP CRS 272°	Rwy Idg 10220 TDZE 9 Apt Elev 9
---	------------------------	--

ILS or LOC RWY 26L

MIAMI INTL (MIA)

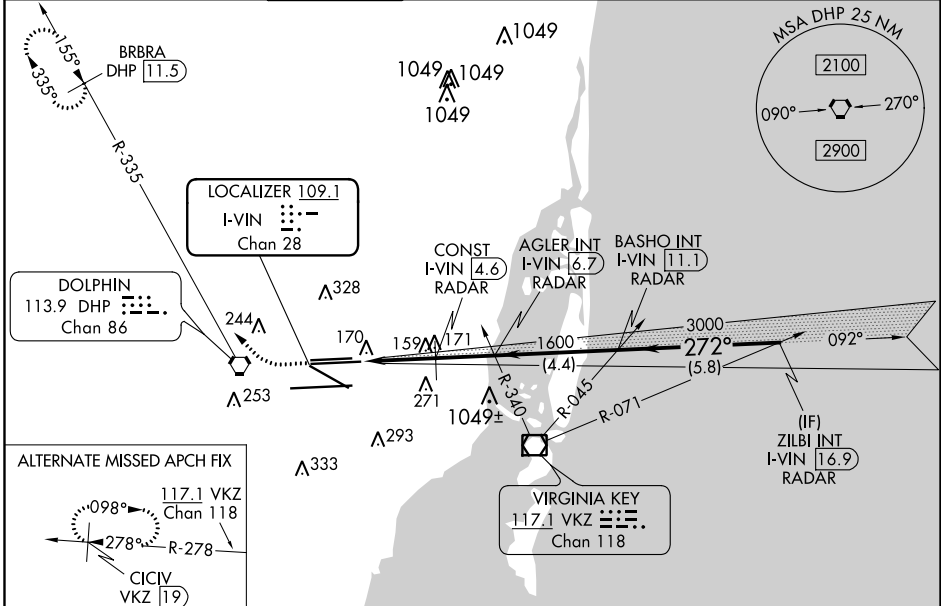
DME required. RADAR required for procedure entry.

Simultaneous approach authorized. Inop table does not apply to S-ILS 26L all Cats. For inop ALS, increase S-LOC 26L Cat C/D visibility to RVR 6000.

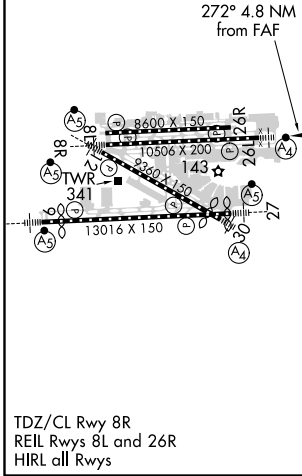


MISSED APPROACH: Climb to 800 then climbing right turn to 2000 on heading 290° and DHP VORTAC R-335 to BRBRA/DHP 11.5 DME and hold.

D-ATIS ARR 119.15 DEP 133.675	MIAMI APP CON 124.85 322.3	MIAMI TOWER 118.3 256.9	GND CON 121.8 (8L/8R/12/26L/26R) 348.6 127.5 (9/27/30)	CINC DEL 135.35	CPDLC
---	--------------------------------------	-----------------------------------	---	---------------------------	-------



ELEV 9	D	TDZE 9
--------	----------	--------



800	2000	DHP R-335	BRBRA DHP 11.5	VGSI and ILS glidepath not coincident (VGSI Angle 3.00/TCH 73).	
CATEGORY		A	B	C	D
S-ILS 26L		209/40		200 (200-¾)	
S-LOC 26L		420/40	411 (500-¾)	420/50	411 (500-1)

SE-3, 15 JUL 2021 to 12 AUG 2021

SE-3, 15 JUL 2021 to 12 AUG 2021