

WAAS CH <b>86903</b> W26A	APP CRS <b>272°</b>	Rwy Idg <b>8600</b> TDZE <b>8</b> Apt Elev <b>9</b>
---------------------------------	------------------------	---

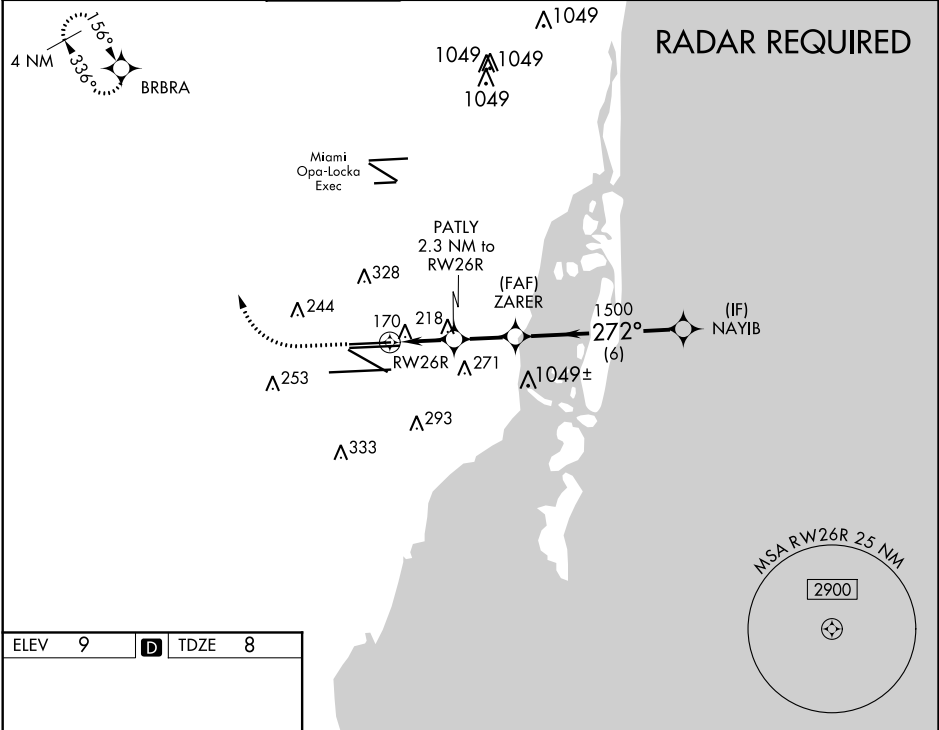
# RNAV (GPS) RWY 26R

MIAMI INTL (MIA)

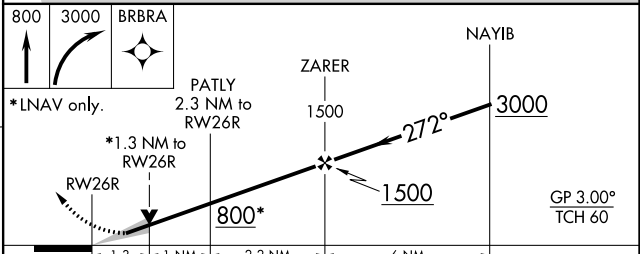
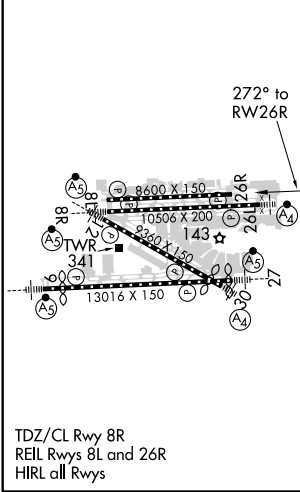
▼ For uncompensated Baro-VNAV systems, LNAV/VNAV NA below 6°C (43°F) or above 54°C (130°F). Simultaneous approach authorized with ILS or LOC RWY 27. DME/DME RNP-0.3 NA. LNAV procedure NA during simultaneous operations. Use of FD or AP providing RNAV track guidance required during simultaneous operations.

MISSED APPROACH: Climb to 800 then climbing right turn to 3000 direct BRBRA and hold.

D-ATIS ARR <b>119.15</b> DEP <b>133.675</b>	MIAMI APP CON <b>124.85 322.3</b>	MIAMI TOWER <b>118.3 256.9</b>	GND CON <b>121.8</b> (8L/8R/12/26L/26R) <b>127.5</b> (9/27/30)	<b>348.6</b>	CLNC DEL <b>135.35</b>	CPDLC
---	--------------------------------------	-----------------------------------	--	--------------	---------------------------	-------



ELEV 9	<b>D</b>	TDZE 8
--------	----------	--------



CATEGORY	A	B	C	D
LPV DA		265- <sup>3</sup> / <sub>4</sub>	257 (300- <sup>3</sup> / <sub>4</sub> )	
LNAV/VNAV DA		433- <sup>1</sup> / <sub>8</sub>	425 (500- <sup>1</sup> / <sub>8</sub> )	
LNAV MDA	480-1	472 (500-1)	480- <sup>1</sup> / <sub>8</sub>	472 (500- <sup>1</sup> / <sub>8</sub> )

SE-3, 15 JUL 2021 to 12 AUG 2021

SE-3, 15 JUL 2021 to 12 AUG 2021

TDZ/CL Rwy 8R  
REIL Rwy 8L and 26R  
HIRL all Rwy

GP 3.00°  
TCH 60