


APP CRS	Rwy Idg	12755
272°	TDZE	8
	Apt Elev	9

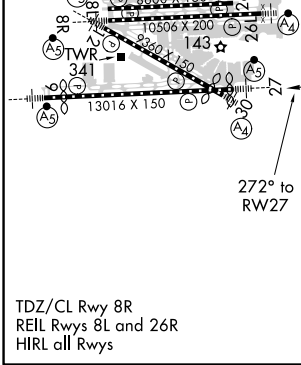
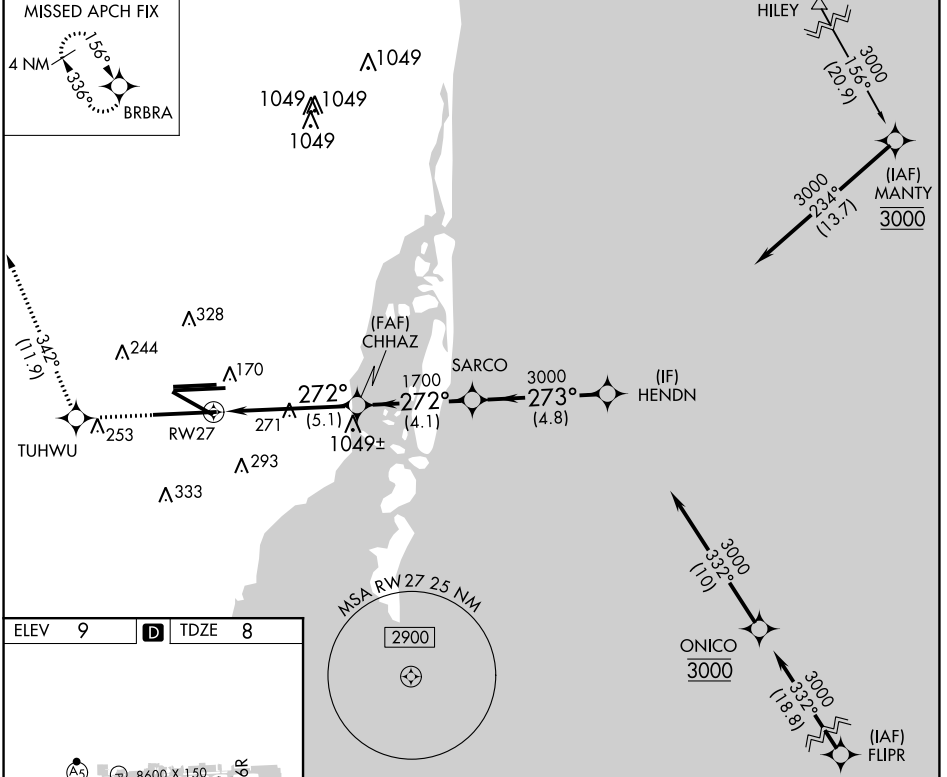
RNAV (RNP) Y RWY 27

MIAMI INTL (MIA)

▽ For uncompensated Baro-VNAV systems, procedure NA below 6°C (43°F) or above 54°C (130°F). GPS Required.
 For inop MALS, increase RNP 0.11 all Cats visibility to RVR 5000 and RNP 0.30 all Cats visibility to 1¼ mile.

MALS

MISSED APPROACH: Climb to 2000 direct TUHWU and on track 342° to BRBRA and hold.

D-ATIS	MIAMI APP CON	MIAMI TOWER	GND CON	CLNC DEL	CPDLC
ARR 119.15	124.85 322.3	118.3 256.9	121.8 (8L/8R/12/26L/26R)	135.35	
DEP 133.675			127.5 (9/27/30)		



2000 TUHWU tr 342° BRBRA

VGSI and RNAV glidepath not coincident (VGSI Angle 3.00/TCH 71).

	SARCO	HENDN			
	CHHAZ 1700	273° 3000	3000		
	RWY 27	272° 1700	3000	GP 3.00° TCH 55	
	-5.1 NM	-4.1 NM	-4.8 NM		
CATEGORY	A	B	C	D	E
RNP 0.11 DA		336/30	328 (400-%)		
RNP 0.30 DA		408/45	400 (400-%)		

AUTHORIZATION REQUIRED

SE-3, 15 JUL 2021 to 12 AUG 2021

SE-3, 15 JUL 2021 to 12 AUG 2021