

WAAS CH 61204 W12A	APP CRS 124°	Rwy Idg TDZE Apt Elev	8579 8 9
--	------------------------	-----------------------------	-------------------------------------

RNAV (GPS) Z RWY 12

MIAMI INTL (MIA)

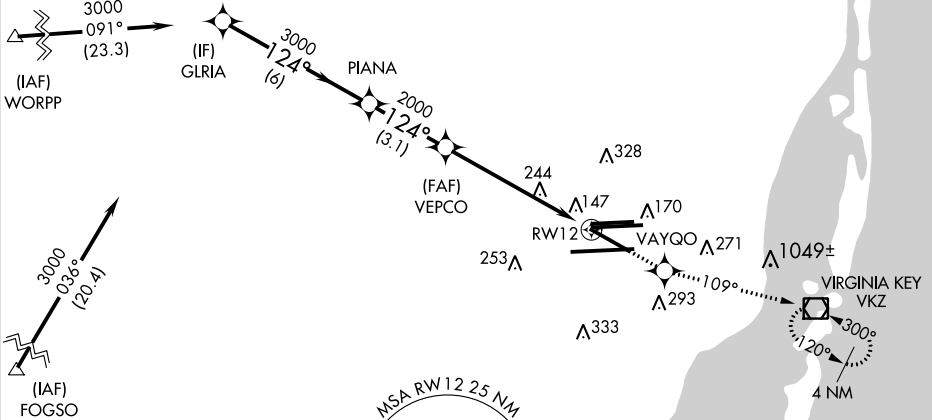
▼ For inoperative MALSR, increase LPV DA all Cats visibility to 1¼, increase LNAV MDA Cats A and B visibility to RVR 5000.
▼ For uncompensated Baro-VNAV systems, LNAV/VNAV NA below -15°C (5°F) or above 49°C (120°F). DME/DME RNP-0.3 NA. Visibility reduction by helicopters NA.



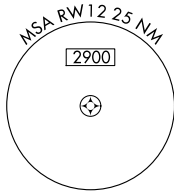
MISSED APPROACH: Climb to 3000 direct VAYGO and via 109° track to VKZ VOR/DME and hold, continue climb-in-hold to 3000.

D-ATIS ARR 119.15 DEP 133.675	MIAMI APP CON 124.85 322.3	MIAMI TOWER 118.3 256.9	121.8 (8L/8R/12/26L/26R) 127.5 (9/27/30)	GND CON 348.6	CLNC DEL 135.35	CPDLC
---	--------------------------------------	-----------------------------------	---	-------------------------	---------------------------	-------

Procedure NA for arrivals at WORPP via V35 westbound and via V529 northwest bound.



Procedure NA for arrivals at FOGSO via V157 westbound.

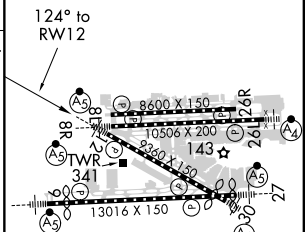
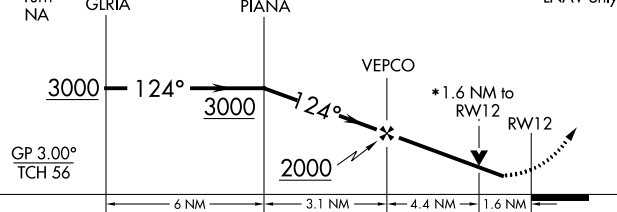


ELEV 9	D TDZE 8
--------	-----------------

VGSI and RNAV glidepath not coincident (VGSI Angle 3.00/TCH 72).



Procedure Turn NA



CATEGORY	A	B	C	D
LPV DA	390/40		382 (400-¾)	
LNAV/VNAV DA	506/60		498 (500-1¼)	
LNAV MDA	600/40	592 (600-¾)	600/50 592 (600-1)	600/60 592 (600-1¼)

TDZ/CL Rwy 8R
 REIL Rwy 8L and 26R
 HIRL all Rwy

SE-3, 15 JUL 2021 to 12 AUG 2021

SE-3, 15 JUL 2021 to 12 AUG 2021