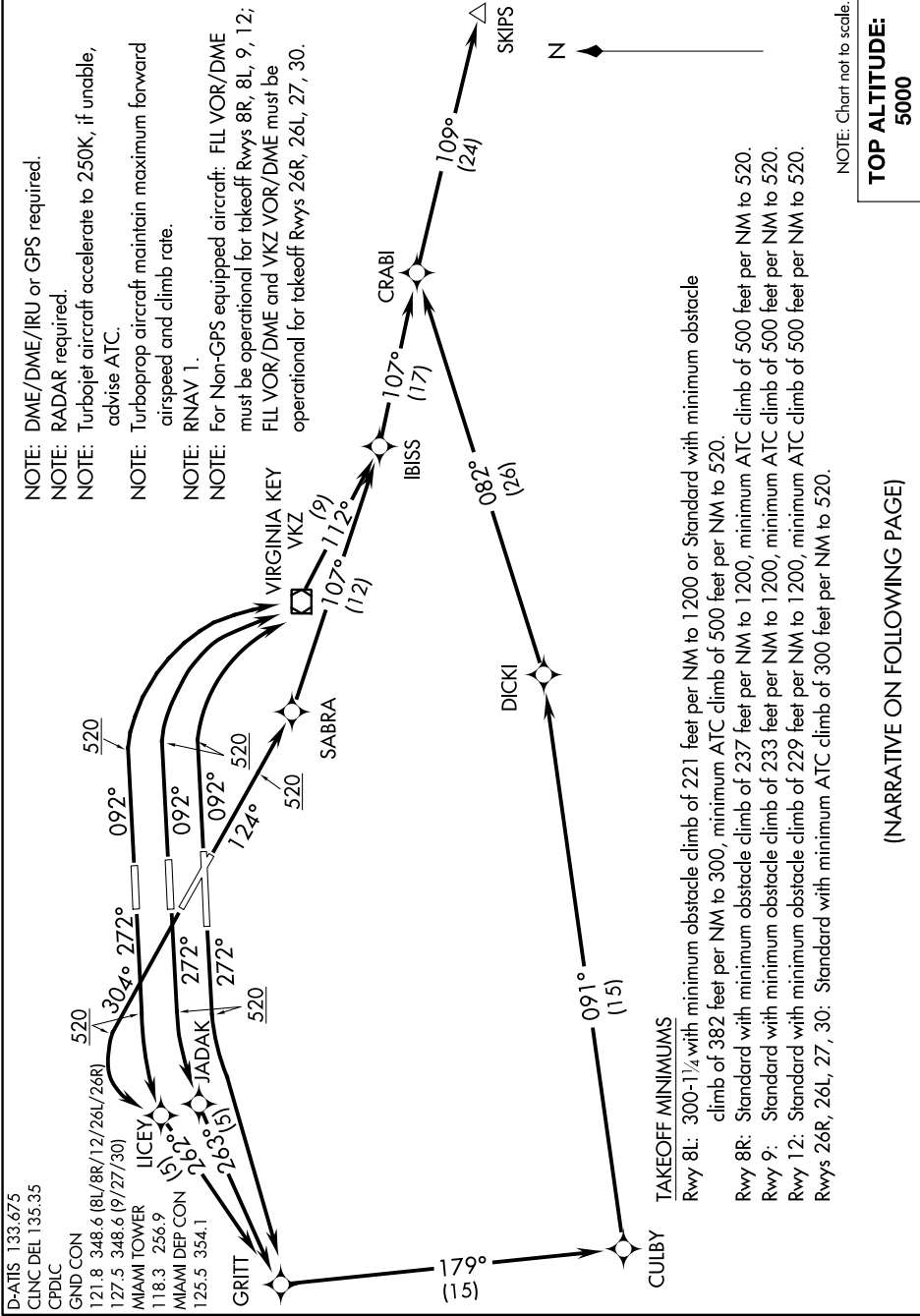


SKIPS TWO DEPARTURE (RNAV)

SE-3: 15 JUL 2021 to 12 AUG 2021

D-ATIS 133.675
 CLNC DEL 135.35
 CPDLC
 GND CON
 121.8 348.6 (8L/8R/12/26L/26R)
 127.5 348.6 (9/27/30)
 MIAMI TOWER
 118.3 256.9
 MIAMI DEP CON
 125.5 354.1

NOTE: DME/DME/IRU or GPS required.
 NOTE: RADAR required.
 NOTE: Turbojet aircraft accelerate to 250K, if unable, advise ATC.
 NOTE: Turboprop aircraft maintain maximum forward airspeed and climb rate.
 NOTE: RNAV 1.
 NOTE: For Non-GPS equipped aircraft: FLL VOR/DME must be operational for takeoff Rwys 8R, 8L, 9, 12; FLL VOR/DME and VKZ VOR/DME must be operational for takeoff Rwys 26R, 26L, 27, 30.



TAKEOFF MINIMUMS
 Rwy 8L: 300-1¹/₄ with minimum obstacle climb of 221 feet per NM to 1200 or Standard with minimum obstacle climb of 382 feet per NM to 300, minimum ATC climb of 500 feet per NM to 520.
 Rwy 8R: Standard with minimum obstacle climb of 237 feet per NM to 1200, minimum ATC climb of 500 feet per NM to 520.
 Rwy 9: Standard with minimum obstacle climb of 233 feet per NM to 1200, minimum ATC climb of 500 feet per NM to 520.
 Rwy 12: Standard with minimum obstacle climb of 229 feet per NM to 1200, minimum ATC climb of 500 feet per NM to 520.
 Rwys 26R, 26L, 27, 30: Standard with minimum ATC climb of 300 feet per NM to 520.

NOTE: Chart not to scale.
TOP ALTITUDE:
5000

(NARRATIVE ON FOLLOWING PAGE)