

(SOUBY5.SOUBY) 20254
SOUBY FIVE DEPARTURE

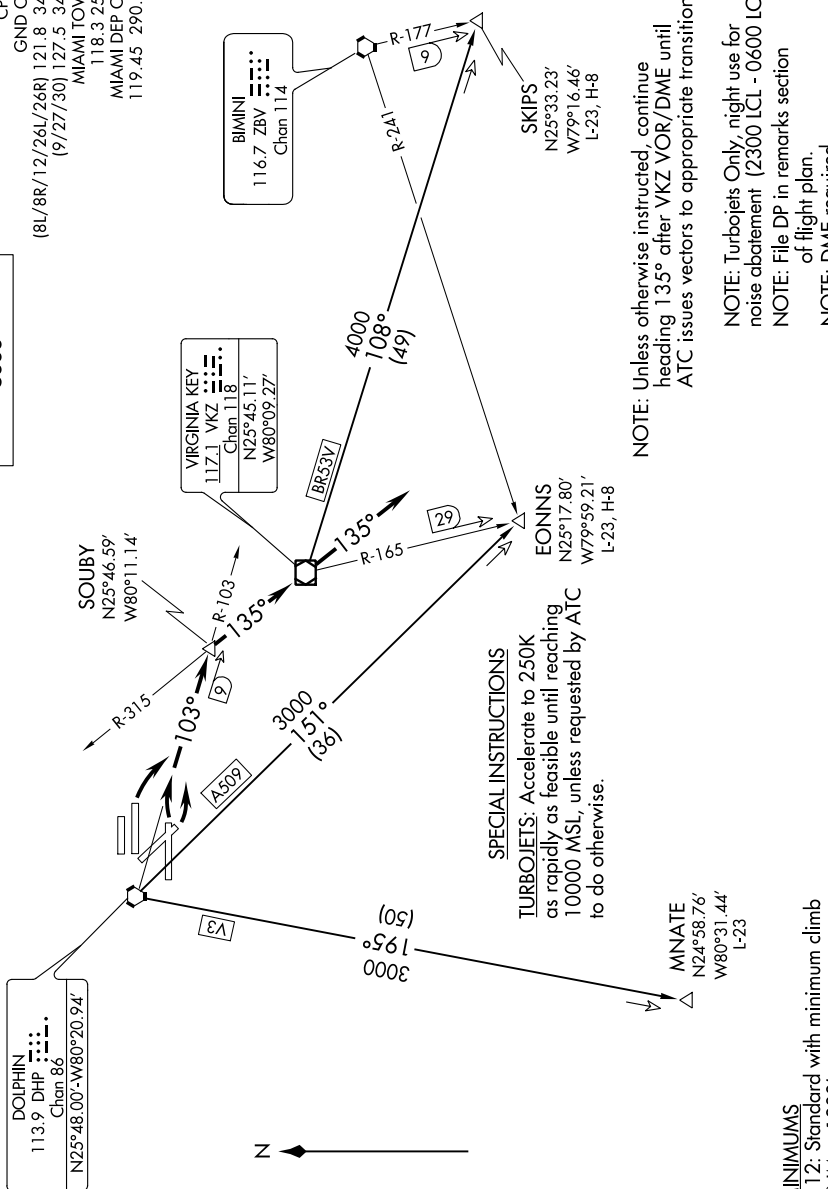
AL-257 (FAA)

MIAMI INTL (MIA)
 MIAMI, FLORIDA

SE-3, 15 JUL 2021 to 12 AUG 2021

**TOP ALTITUDE:
 5000**

D-ATIS 133.675
 CLNC DEL 135.33
 CPDLC
 GND CON
 (8L/8R/12/26L/26R) 121.8 348.6
 (9/27/30) 127.5 348.6
 MIAMI TOWER
 118.3 256.9
 MIAMI DEP CON
 119.45 290.325



SPECIAL INSTRUCTIONS
TURBOJET: Accelerate to 250K as rapidly as feasible until reaching 10000 MSL, unless requested by ATC to do otherwise.

NOTE: Unless otherwise instructed, continue heading 135° after VKZ VOR/DME until ATC issues vectors to appropriate transition.

NOTE: Turbojets Only, night use for noise abatement (2300 LCL - 0600 LCL).
NOTE: File DP in remarks section of flight plan.
NOTE: DME required.

NOTE: Chart not to scale.

TAKEOFF MINIMUMS
 Rwy's 8R, 9, 12: Standard with minimum climb of 370' per NM to 1800'.
 Rwy's 26L, 27, 30: NA - NOISE ABATEMENT.

(NARRATIVE ON FOLLOWING PAGE)

(SOUBY5.SOUBY) 30APR15
SOUBY FIVE DEPARTURE

MIAMI, FLORIDA
 MIAMI INTL (MIA)

SE-3, 15 JUL 2021 to 12 AUG 2021