

(AGUDE.AGUDE5) 21112  
**AGUDE FIVE ARRIVAL**

AL-263 (FAA)

MINNEAPOLIS-ST PAUL, MINNESOTA

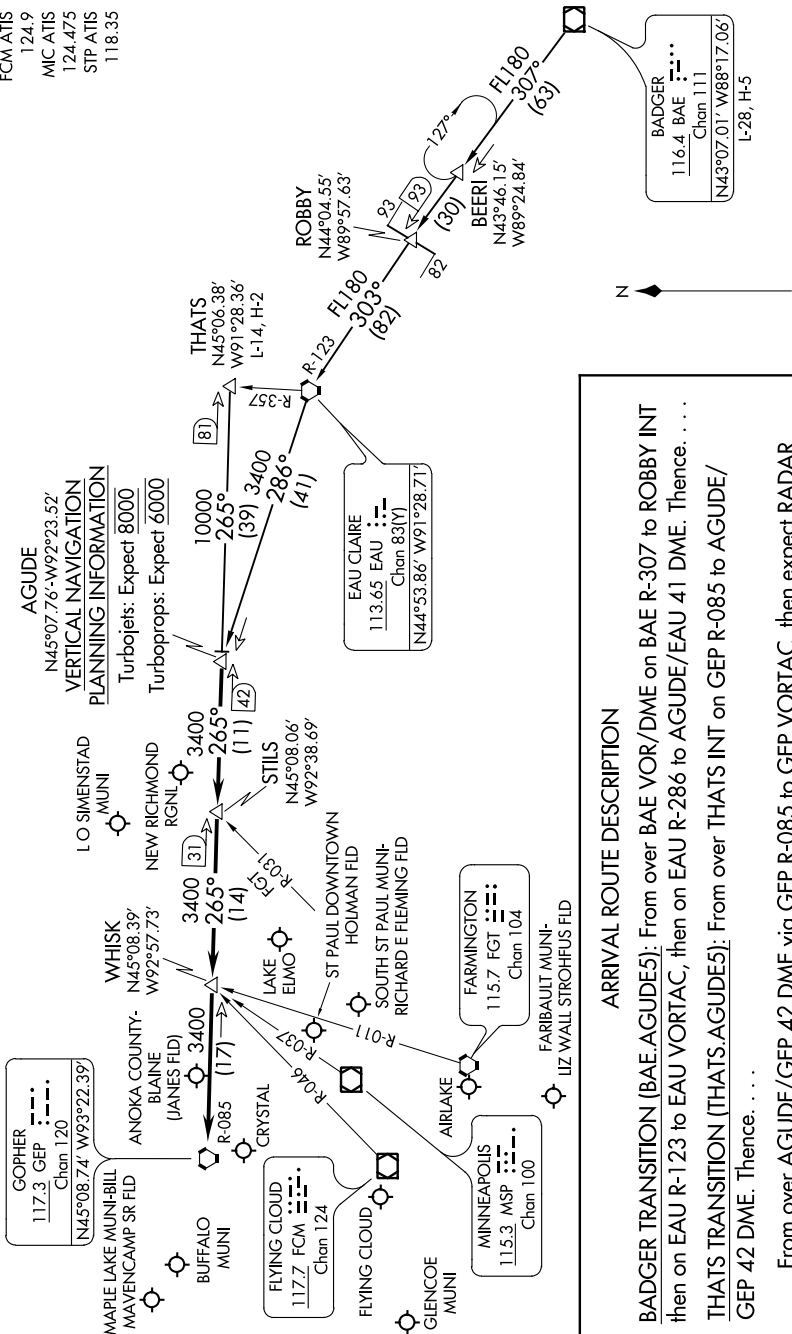
12020GAVZ1 to 12020GAVZ1 '1-C-

NOTE: Chart not to scale.

NOTE: DME and RADAR required.

MINNEAPOLIS APP CON  
 121.2 335.5  
 ANE ATIS  
 120.625  
 FCM ATIS  
 124.9  
 MIC ATIS  
 124.475  
 STP ATIS  
 118.35

**AGUDE**  
 N45°07.76'-W92°23.52'  
**VERTICAL NAVIGATION**  
 Planning Information  
 Turbojets: Expect 8000  
 Turboprops: Expect 6000



**ARRIVAL ROUTE DESCRIPTION**

**BADGER TRANSITION (BAE.AGUDE5):** From over BAE VOR/DME on BAE R-307 to ROBBY INT then on EAU R-123 to EAU VORTAC, then on EAU R-286 to AGUDE/EAU 41 DME. Thence. . . .

**THATS TRANSITION (THATS.AGUDE5):** From over THATS INT on GEP R-085 to AGUDE/ GEP 42 DME. Thence. . . .

. . . . From over AGUDE/GEP 42 DME via GEP R-085 to GEP VORTAC, then expect RADAR vectors to final approach course.

**AGUDE FIVE ARRIVAL**  
 (AGUDE.AGUDE5) 120CT17

MINNEAPOLIS-ST PAUL, MINNESOTA

NC-1, 15 JUL 2021 to 12 AUG 2021