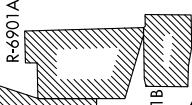


COULT SEVEN DEPARTURE

ATIS
118.35
CLNC DEL
121.675
ST. PAUL TOWER*
119.1 257.8
MINNEAPOLIS DEP CON
121.2 335.65

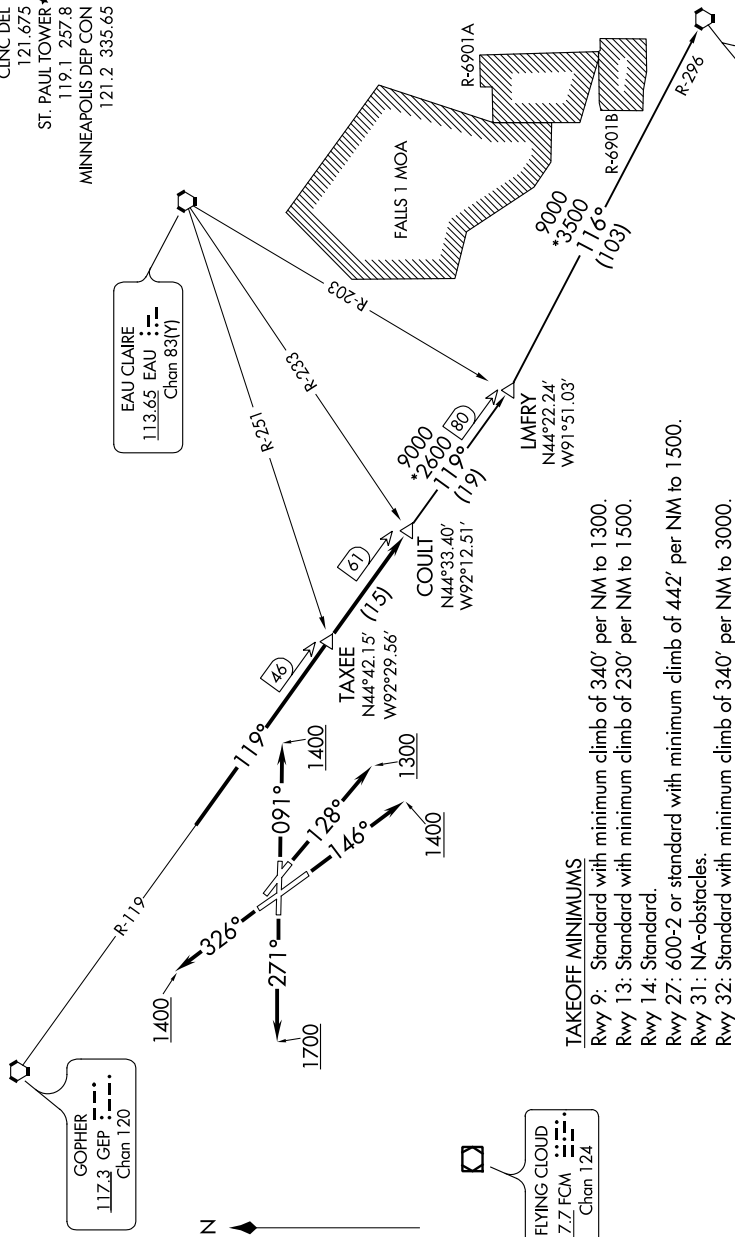
EAU CLAIRE
113.65 EAU
Chan 83(V)

MINNEAPOLIS DEP CON



DELLS
117.0 DDL
Chan 117
N43°33.05'-W89°45.82'
L-28, H-5

NC-1, 15 JUL 2021 to 12 AUG 2021



TAKEOFF MINIMUMS
 Rwy 9: Standard with minimum climb of 340' per NM to 1300.
 Rwy 13: Standard with minimum climb of 230' per NM to 1500.
 Rwy 14: Standard.
 Rwy 27: 600-2 or standard with minimum climb of 442' per NM to 1500.
 Rwy 31: NA-obstacles.
 Rwy 32: Standard with minimum climb of 340' per NM to 3000.

GOPHER
117.3 GEP
Chan 120

FLYING CLOUD
117.7 FCM
Chan 124



(NARRATIVE ON FOLLOWING PAGE)

NOTE: RADAR required.
NOTE: Chart not to scale.

NC-1, 15 JUL 2021 to 12 AUG 2021

COULT SEVEN DEPARTURE