

LOC/DME I-BAO <b>111.5</b> Chan 52	APP CRS <b>326°</b>	Rwy Idg TDZE Apt Elev	<b>6109</b> <b>704</b> <b>705</b>
--	------------------------	-----------------------------	---

# ILS or LOC RWY 32

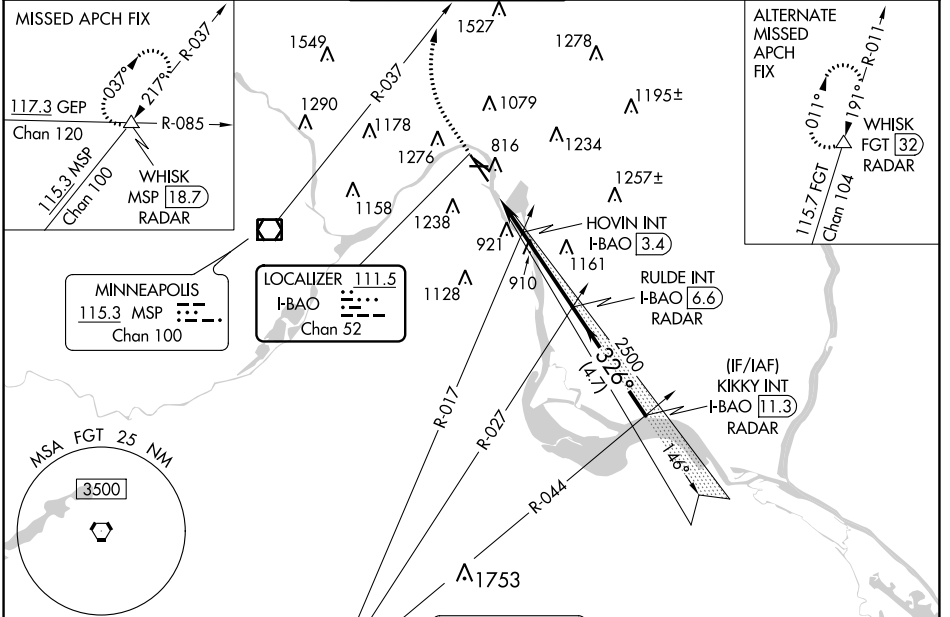
ST PAUL DOWNTOWN HOLMAN FLD (STP)

DME or RADAR required. RADAR required for procedure entry.

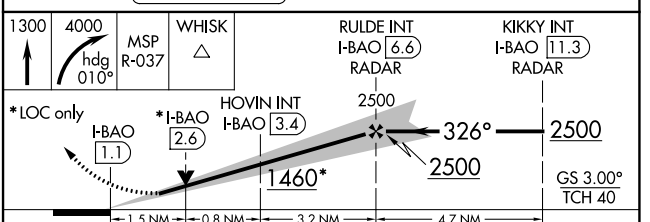
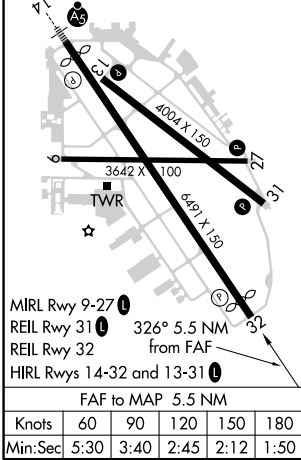
**▼** Rwy 32 helicopter visibility reduction below RVR 4000 NA. Inop table does not apply to S-ILS 32 all Cats and S-LOC all Cats. HOVIN FIX MINIMUMS: Inop table does not apply to Cats A/B. For inop ALS, increase Cats C/D visibility to 1 3/8 SM.

MISSED APPROACH: Climb to 1300 then climbing right turn to 4000 on heading 010° and MSP R-037 to WHISK INT/MSP 18.7 DME/RADAR and hold.

ATIS <b>118.35</b>	MINNEAPOLIS APP CON <b>121.2 335.65</b>	ST. PAUL TOWER * <b>119.1 (CTAF) 0 257.8</b>	GND CON <b>121.675</b>	CLNC DEL <b>121.675</b>	UNICOM <b>122.95</b>
-----------------------	--	---	---------------------------	----------------------------	-------------------------



ELEV 705	<b>D</b>	TDZE 704
----------	----------	----------



CATEGORY	A B C D			
S-ILS 32	1011/50 307 (400-1)			
S-LOC 32	1460/55 756 (800-1)	1460/60 756 (800-1 1/4)	1460-2	756 (800-2)
<b>C</b> CIRCLING	1580-1 1/4	875 (900-1 1/4)	1580-2 1/2 875 (900-2 1/2)	1580-2 3/4 875 (900-2 3/4)
HOVIN FIX MINIMUMS				
S-LOC 32	1220/55	516 (600-1)	1220-1 1/4	516 (600-1 1/4)
<b>C</b> CIRCLING	1580-1 1/4	875 (900-1 1/4)	1580-2 1/2 875 (900-2 1/2)	1580-2 3/4 875 (900-2 3/4)

NC-1, 15 JUL 2021 to 12 AUG 2021

NC-1, 15 JUL 2021 to 12 AUG 2021