

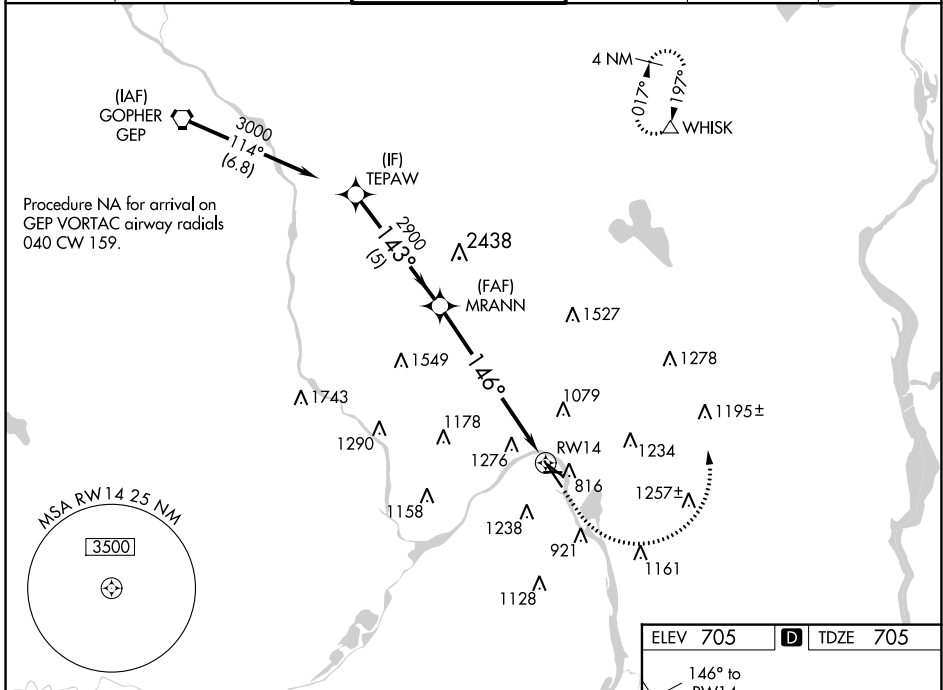
WAAS CH 62828 W14A	APP CRS 146°	Rwy Idg TDZE Apt Elev	6148 705 705
--	------------------------	-----------------------------	---

RNAV (GPS) RWY 14

ST PAUL DOWNTOWN HOLMAN FLD (STP)

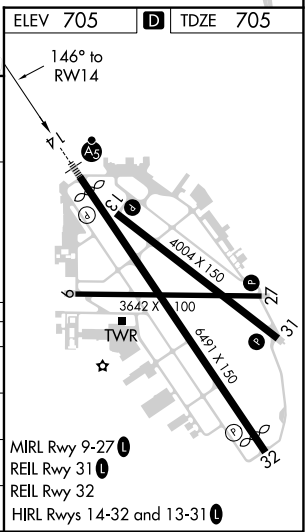
<p>For uncompensated Baro-VNAV systems, LNAV/VNAV NA below -21°C (-5°F) or above 54°C (130°F). Rwy 14 helicopter visibility reduction below 3/4 SM NA. DME/DME RNP-0.3 NA. For inop MALSR, increase LNAV Cats C and D to 2 1/2 SM.</p>	<p>MALSR</p>	<p>MISSED APPROACH: (Do not exceed 250K until WHISK) Climb to 1700 then climbing left turn to 3000 direct WHISK and hold.</p>
	<p>WHISK</p>	

ATIS 118.35	MINNEAPOLIS APP CON 121.2 335.65	ST. PAUL TOWER ★ 119.1(CTAF) 0 257.8	GND CON 121.675	CLNC DEL 121.675	UNICOM 122.95
-----------------------	--	--	---------------------------	----------------------------	-------------------------



VGSI and RNAV glidepath not coincident (VGSI Angle 3.00/TCH 50).

TEPAW	MRANN	1700	3000	WHISK
3000	2900	↑	↙	△
GP 3.00°				*LNAV only.
TCH 42				
5 NM		4.4 NM	2.4 NM	
CATEGORY	A	B	C	D
LPV DA	955/40		250 (300-3/4)	
LNAV/VNAV DA	1511-2 1/2		806 (900-2 1/2)	
LNAV MDA	1520/40	815 (900-3/4)	1520-1 7/8	815 (900-1 7/8)
C CIRCLING	1580-1 1/4	875 (900-1 1/4)	1580-2 1/2	1580-2 3/4
			875 (900-2 1/2)	875 (900-2 3/4)



NC-1, 15 JUL 2021 to 12 AUG 2021

NC-1, 15 JUL 2021 to 12 AUG 2021