

(RST1.RST) 21112

# ROCHESTER ONE DEPARTURE

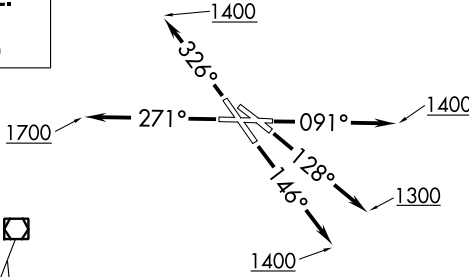
AL-263 (FAA)

ST PAUL DOWNTOWN HOLMAN FLD (STP)

ST. PAUL, MINNESOTA

**TOP ALTITUDE:  
(JETS) 7000/  
(PROPS) 5000**

ATIS 118.35  
CLNC DEL  
121.675  
MINNEAPOLIS DEP CON  
121.2 284.7  
ST. PAUL TOWER \*  
119.1 257.8



FLYING CLOUD  
117.7 FCM  
Chan 124

FARMINGTON  
115.7 FGT  
Chan 104  
N44°37.86'-W93°10.92'

FOBUG  
N44°25.33'  
W93°02.18'  
4000

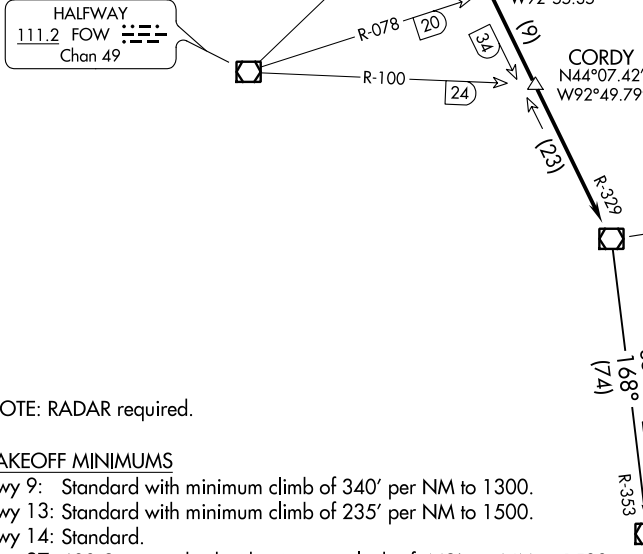
DOKTR  
N44°15.48'  
W92°55.35'

CORDY  
N44°07.42'  
W92°49.79'

HALFWAY  
111.2 FOW  
Chan 49

ROCHESTER  
112.0 RST  
Chan 57  
N43°46.97'-W92°35.82'

WATERLOO  
112.2 ALO  
Chan 59  
N42°33.39'-W92°23.94'  
L-28, H-5



NOTE: RADAR required.

### TAKEOFF MINIMUMS

- Rwy 9: Standard with minimum climb of 340' per NM to 1300.
- Rwy 13: Standard with minimum climb of 235' per NM to 1500.
- Rwy 14: Standard.
- Rwy 27: 600-2 or standard with minimum climb of 442' per NM to 1500.
- Rwy 31: NA - Obstacles.
- Rwy 32: Standard with minimum climb of 340' per NM to 3000.

(NARRATIVE ON FOLLOWING PAGE)

NOTE: Chart not to scale.

# ROCHESTER ONE DEPARTURE

(RST1.RST) 13SEP18

ST. PAUL, MINNESOTA  
ST PAUL DOWNTOWN HOLMAN FLD (STP)

NC-1, 15 JUL 2021 to 12 AUG 2021

NC-1, 15 JUL 2021 to 12 AUG 2021