

WLSTN SEVEN DEPARTURE

ST PAUL DOWNTOWN HOLMAN FLD (STP)  
ST. PAUL, MINNESOTA

AL-263 (FAA)

21112

12020G.1-1-15 JUL 2021 to 12 AUG 2021

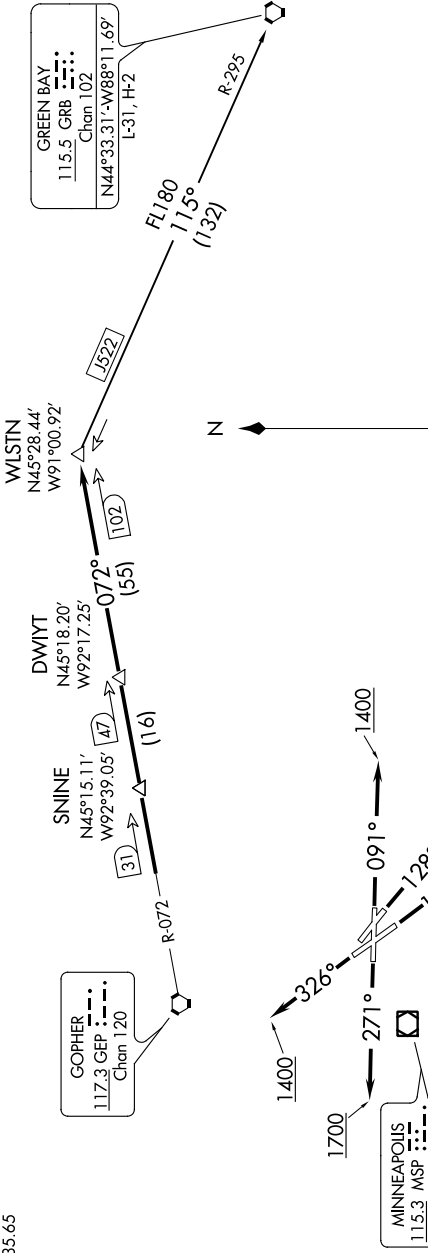
ATIS 118.35  
CLINC DEL 121.675  
ST. PAUL TOWER \* 119.1 257.8  
MINNEAPOLIS DEP CON 121.2 335.65

TOP ALTITUDE:  
(JETS) 7000/  
(PROPS) 5000

GREEN BAY  
115.5 GRB  
Chan 102  
N44°33.31'W88°11.69'  
L-31, H-2

GOPHER  
117.3 GEP  
Chan 120

MINNEAPOLIS  
115.3 MSP  
Chan 100



TAKEOFF MINIMUMS

- Rwy 9: Standard with minimum climb of 340' per NM to 1300.
- Rwy 13: Standard with minimum climb of 235' per NM to 1500.
- Rwy 14: Standard.
- Rwy 27: 600-2 or standard with minimum climb of 442' per NM to 1500.
- Rwy 31: NA-Obstacles.
- Rwy 32: Standard with minimum climb of 340' per NM to 3000.

NOTE: RADAR required.  
NOTE: Chart not to scale.

(NARRATIVE ON FOLLOWING PAGE)

WLSTN SEVEN DEPARTURE  
(WLSTN7.WLSTN) 17AUG17

ST. PAUL, MINNESOTA  
ST PAUL DOWNTOWN HOLMAN FLD (STP)

NC-1, 15 JUL 2021 to 12 AUG 2021