

WAAS CH <b>56511</b> <b>W36A</b>	APP CRS <b>001°</b>	Rwy Idg <b>7800</b> TDZE <b>26</b> Apt Elev <b>26</b>
--	------------------------	---

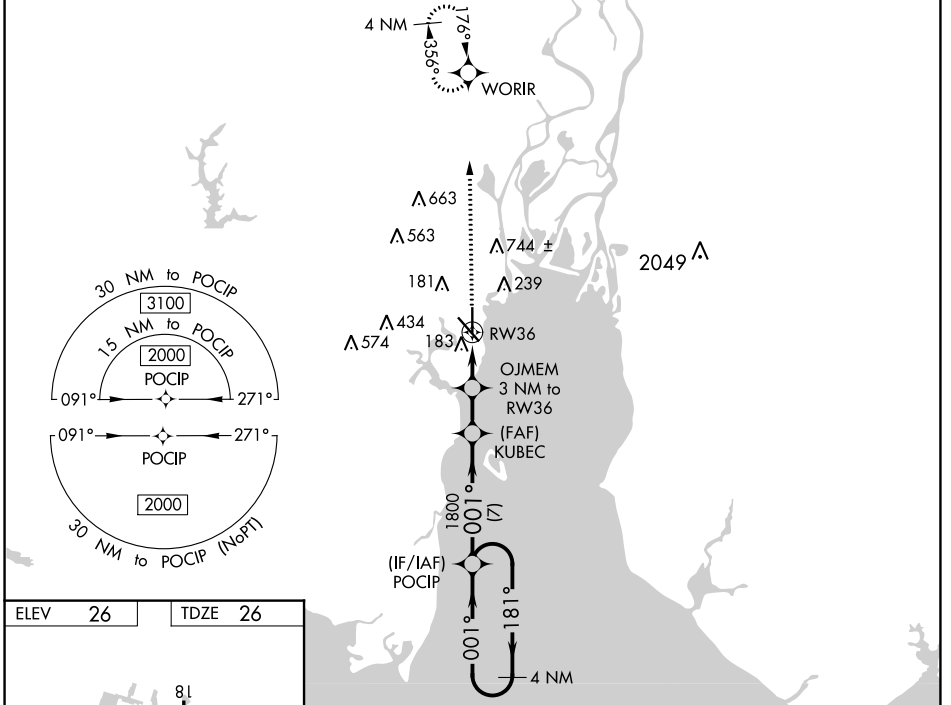
# RNAV (GPS) RWY 36

MOBILE DOWNTOWN (BFM)

**⚠** DME/DME RNP-0.3 NA. When local altimeter setting not received, use Mobile Rgnl altimeter setting and increase all DA 50 feet and MDA 60 feet and increase LPV visibility all Cats ¼ mile, increase LNAV/VNAV visibility all Cats ⅓ mile, increase LNAV Cat C/D visibility ¼ mile, and increase Circling Cat C visibility ¼ mile. For uncompensated Baro-VNAV systems, LNAV/VNAV NA below 13°C (56°F) or above 54°C (130°F). Baro-VNAV and VDP NA when using Mobile Rgnl altimeter setting. Helicopter visibility reduction below ¾ SM NA.

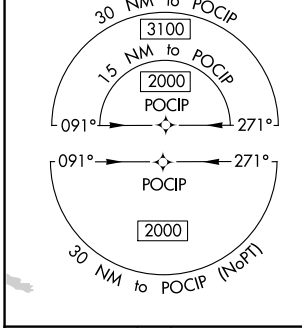
**MISSED APPROACH:**  
Climb to 2100 direct WORIR and hold.

ATIS <b>135.575</b>	MOBILE APP CON ★ <b>118.5 269.3</b>	DOWNTOWN TOWER ★ <b>118.8 (CTAF) 0 251.1</b>	GND CON <b>121.7 239.3</b>	UNICOM <b>122.95</b>
------------------------	--	---	-------------------------------	-------------------------

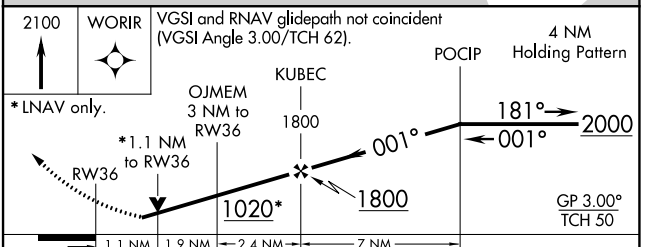
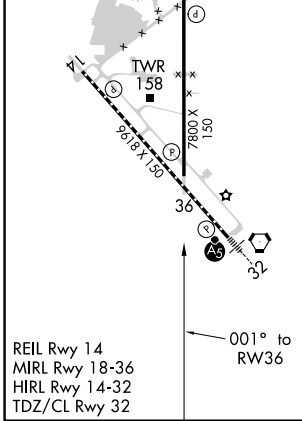


SE-4, 15 JUL 2021 to 12 AUG 2021

SE-4, 15 JUL 2021 to 12 AUG 2021



ELEV <b>26</b>	TDZE <b>26</b>
----------------	----------------



CATEGORY	A	B	C	D
LPV DA		308-7/8	282 (300-7/8)	
LNAV/VNAV DA		470-1 1/2	444 (500-1 1/2)	
LNAV MDA	440-1	414 (500-1)	440-1 1/8	414 (500-1 1/8)
<b>ⓐ</b> CIRCLING	680-1	654 (700-1)	680-1 3/4	1100-3 1074 (1100-3)