

VORTAC OGD 115.7 Chan 104	APP CRS 101°	Rwy Idg TDZE Apt Elev N/A N/A 4473
---	------------------------	--

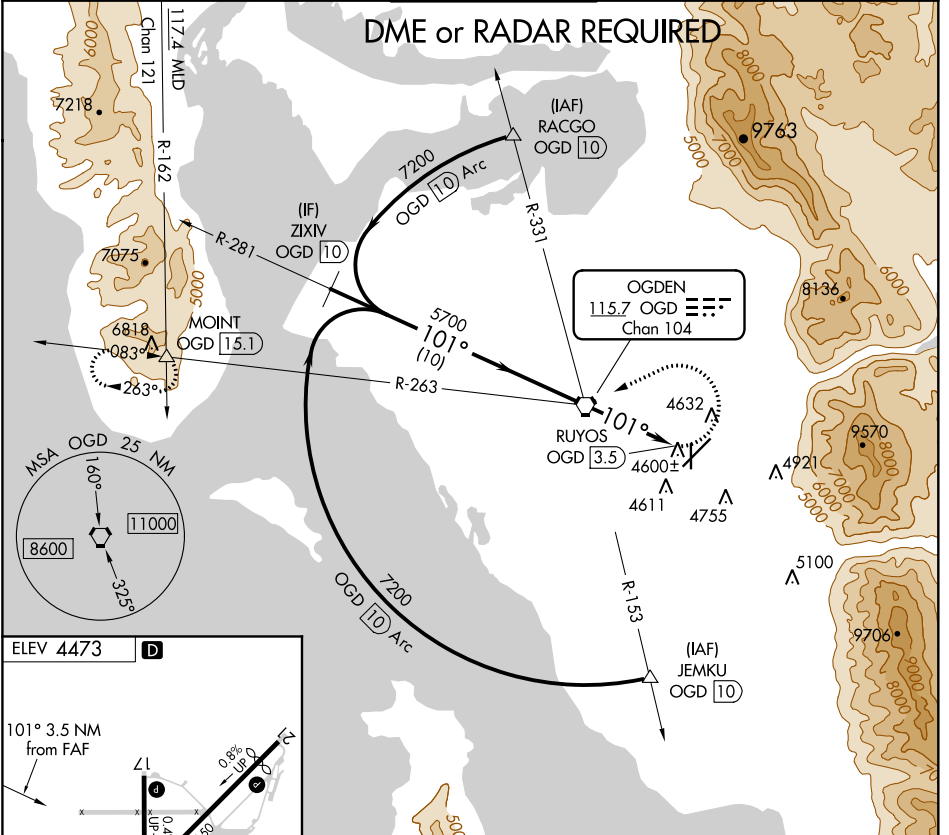
VOR-A

OGDEN-HINCKLEY (OGD)

▼ Circling Rwy 17 NA at night.
▲ Circling NA for Cat C/D east of Rwys 21 and 35.
 Rwy 17 and 35 helicopter visibility reduction below 1 SM NA.
 When local altimeter setting not received, use Hill AFB altimeter setting.

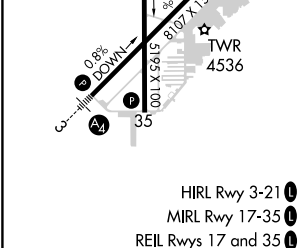
MISSED APPROACH: Climbing left turn to 13000 direct OGD VORTAC and on OGD VORTAC R-263 to MOINT INT/15.1 DME and hold, continue climb-in-hold to 13000.

ATIS 125.55	SALT LAKE CITY APP CON 121.1 319.25	OGDEN TOWER* 118.7 (CTAF) 253.5	GND CON 121.7	UNICOM 122.95
-----------------------	---	---	-------------------------	-------------------------



SW-4, 15 JUL 2021 to 12 AUG 2021

SW-4, 15 JUL 2021 to 12 AUG 2021



ELEV 4473	D	ZIXIV OGD [10]	OGD VORTAC	13000	OGD	OGD R-263	MOINT
101° 3.5 NM from FAF	Diagram	7200	5700	101°	RUYOS OGD [3.5]	10 NM	3.5 NM
Diagram	Diagram	Diagram	Diagram	Diagram	Diagram	Diagram	Diagram

FAF to MAP 3.5 NM	CATEGORY	A	B	C	D
Knots	C CIRCLING	4980-1 507 (600-1)	5060-1 587 (600-1)	5100-1¾ 627 (700-1¾)	5100-2 627 (700-2)
Min:Sec		3:30	2:20	1:45	1:24
		1:24	1:10		

OGDEN, UTAH
Orig 29MAR18

41°12'N-112°01'W

OGDEN-HINCKLEY (OGD)

VOR-A