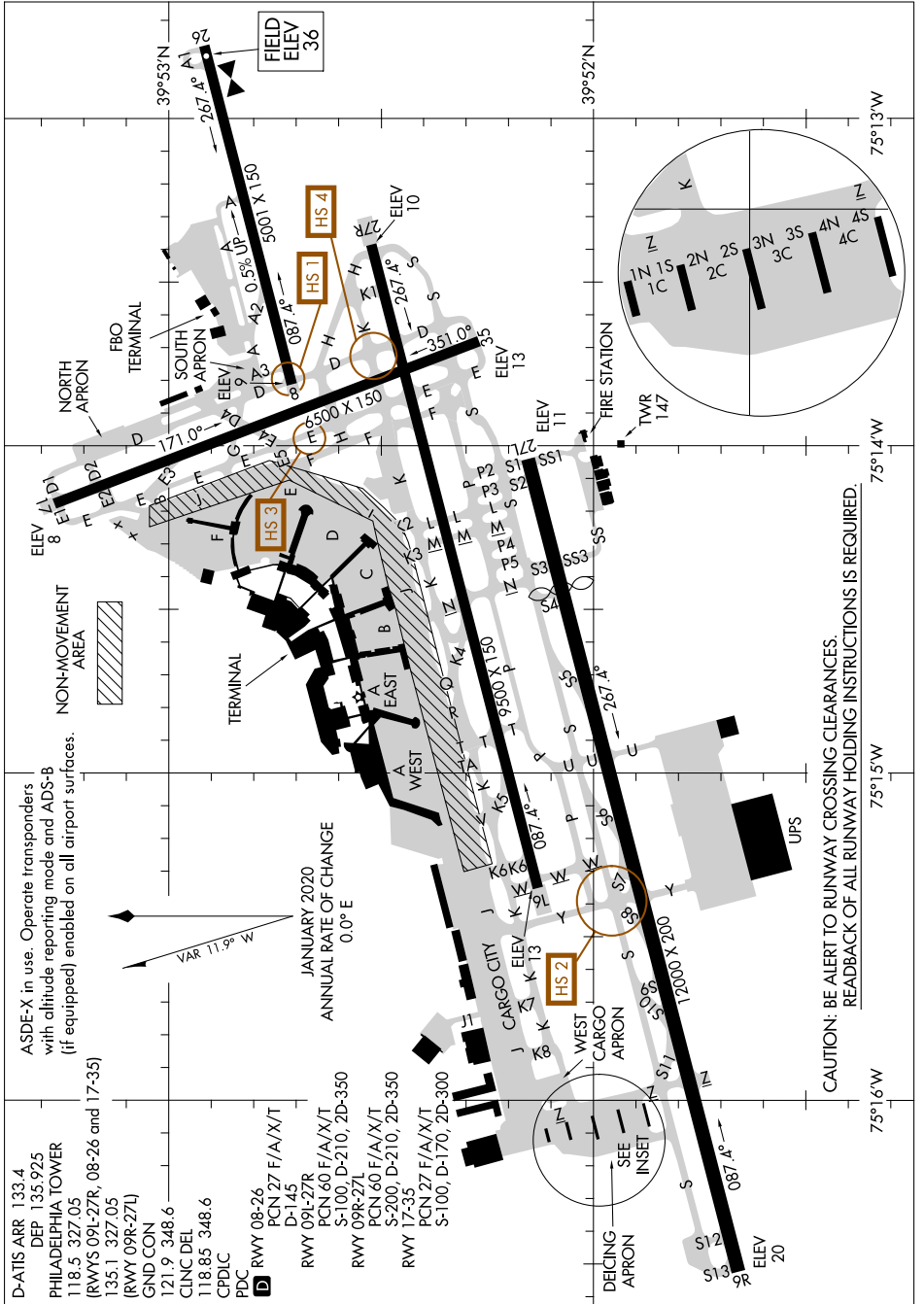


# AIRPORT DIAGRAM

AL-320 (FAA)

PHILADELPHIA INTL (PHL)  
PHILADELPHIA, PENNSYLVANIA



NE-4, 15 JUL 2021 to 12 AUG 2021

NE-4, 15 JUL 2021 to 12 AUG 2021

# AIRPORT DIAGRAM

PHILADELPHIA, PENNSYLVANIA  
PHILADELPHIA INTL (PHL)

ASDE-X in use. Operate transponders with altitude reporting mode and ADS-B (if equipped) enabled on all airport surfaces.

VAR 11.9° W

JANUARY 2020  
ANNUAL RATE OF CHANGE  
0.0° E

CAUTION: BE ALERT TO RUNWAY CROSSING CLEARANCES.  
READBACK OF ALL RUNWAY HOLDING INSTRUCTIONS IS REQUIRED.