

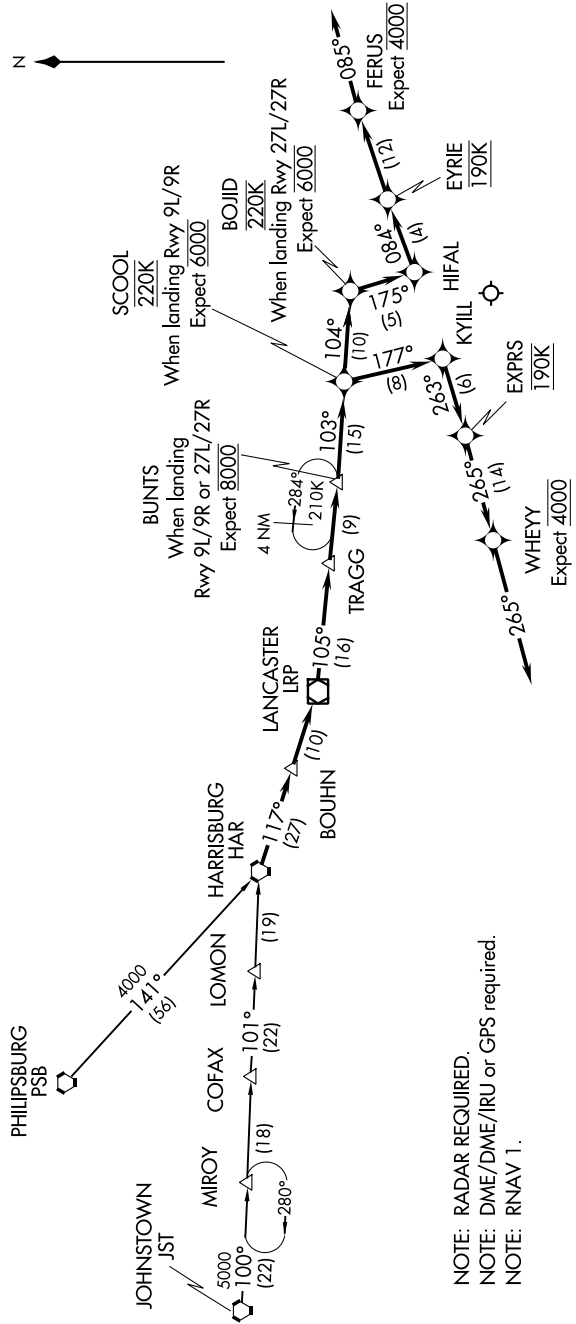
BOJID TWO ARRIVAL (RNAV)

NE-4, 15 JUL 2021 to 12 AUG 2021

JOHNSTOWN TRANSITION (JST,BOJID2):
PHILIPSBURG TRANSITION (PSB,BOJID2):

- D-ATIS ARR 133.4
- PHILADELPHIA APP CON 124.35 319.15
- PHILADELPHIA FINAL CONTROL 125.4 263.125
- PHILADELPHIA TOWER 118.5 327.05
- (Rwys 9L/27R, 8/26 and 17/35) 135.1 327.05
- (Rwy 9R/27L) 121.9 348.6
- GND CON 118.85 348.6
- CLNC DEL

From HAR VORTAC, thence BOUHN, thence LRP VOR/DME, thence TRAGG, thence BUNTS, WHEN PHILADELPHIA INTL IS LANDING RWYS 27L/27R, thence SCOOOL, thence BOJID, thence HIFAL, thence EYRIE, thence FERUS, depart FERUS heading 085°, expect RADAR vectors to final approach. WHEN PHILADELPHIA INTL IS LANDING RWYS 9L/9R, thence SCOOOL, thence KYILL, thence EXPRS, thence WHEYY, depart WHEYY heading 265°. Expect RADAR vectors to final approach.



NOTE: RADAR REQUIRED.
NOTE: DME/DME/IRU or GPS required.
NOTE: RNAV 1.

NOTE: Chart not to scale.

BOJID TWO ARRIVAL (RNAV)

(BOJID,BOJID2) 15SEP16

NE-4, 15 JUL 2021 to 12 AUG 2021