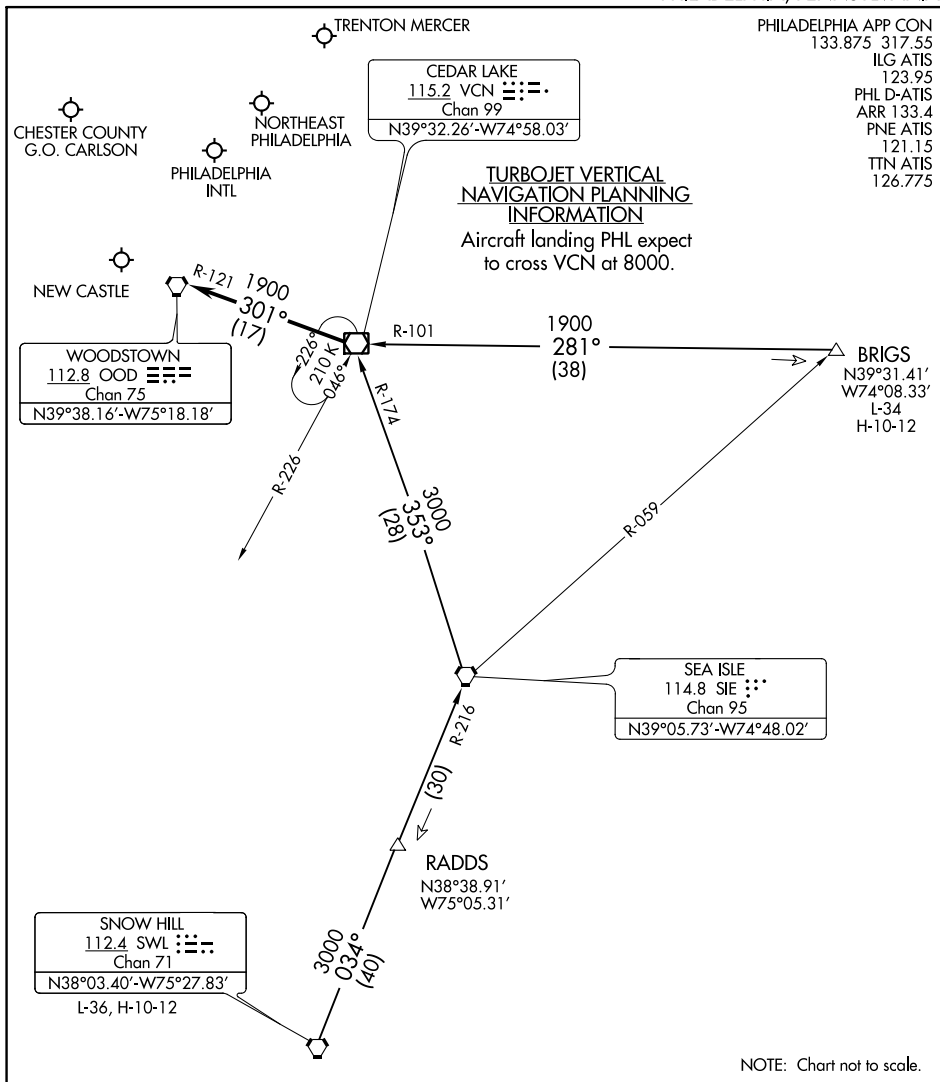


# CEDAR LAKE NINE ARRIVAL

PHILADELPHIA, PENNSYLVANIA



PHILADELPHIA APP CON  
 133.875 317.55  
 ILG ATIS  
 123.95  
 PHL D-ATIS  
 ARR 133.4  
 PNE ATIS  
 121.15  
 TTN ATIS  
 126.775

**TURBOJET VERTICAL  
 NAVIGATION PLANNING  
 INFORMATION**  
 Aircraft landing PHL expect  
 to cross VCN at 8000.

**BRIGS TRANSITION (BRIGS.VCN9):** From over BRIGS on VCN R-101 to VCN VOR/DME. Thence. . . .

**SNOW HILL TRANSITION (SWL.VCN9):** From over SWL VORTAC on SWL R-034 and SIE R-216 to SIE VORTAC, then on SIE R-353 and VCN R-174 to VCN VOR/DME. Thence. . . .

. . . . from over VCN VOR/DME: Turbojets expect RADAR vectors to final approach course. Non-Turbojets continue on the VCN R-301 and the OOD R-121 to OOD VORTAC; expect RADAR vectors to final approach course.

NE-4, 15 JUL 2021 to 12 AUG 2021

NE-4, 15 JUL 2021 to 12 AUG 2021

# CEDAR LAKE NINE ARRIVAL

(VCN.VCN9) 07DEC17

PHILADELPHIA, PENNSYLVANIA