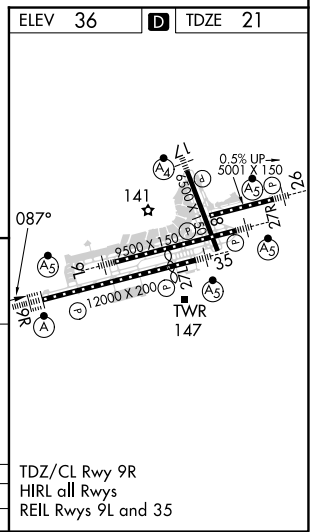
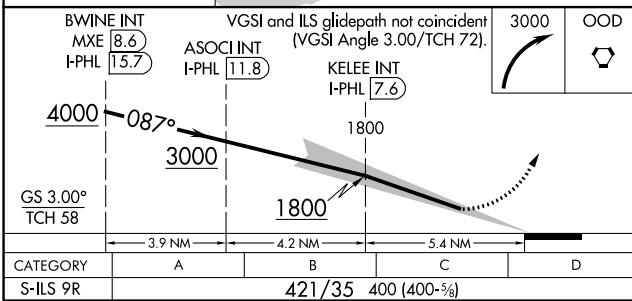
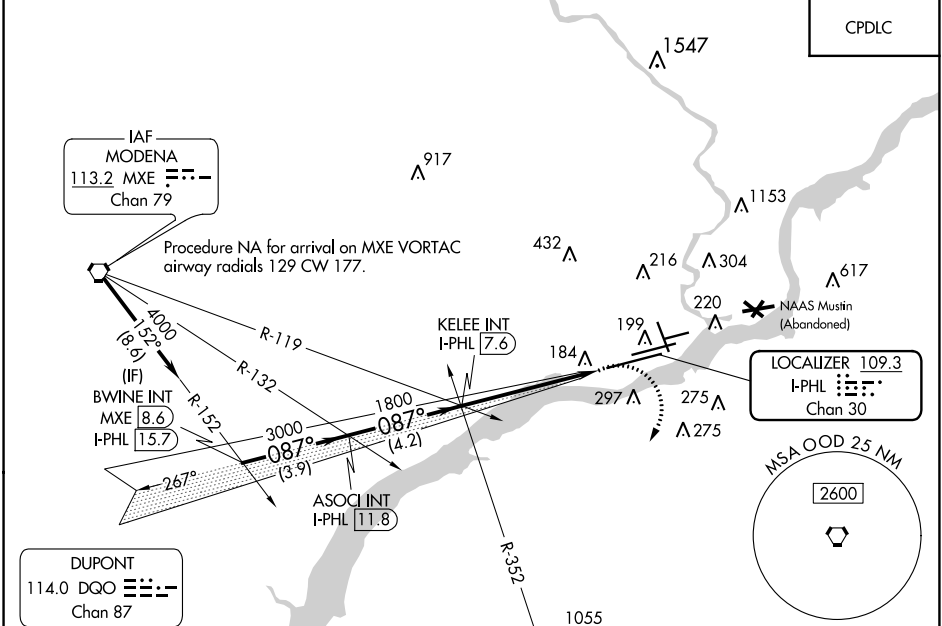


# ILS V RWY 9R (CONVERGING)

PHILADELPHIA INTL (PHL)

LOC/DME I-PHL	APP CRS	Rwy Idg	<b>12000</b>
<b>109.3</b>	<b>087°</b>	TDZE	<b>21</b>
Chan <b>30</b>		Apt Elev	<b>36</b>

RADAR required.		ALS-F-2	MISSED APPROACH: Climbing right turn to 3000 direct OOD VORTAC and hold.	
<p><b>V</b> Simultaneous approach authorized. For inop ALS, increase S-ILS 9R all Cats visibility to RVR 6000.</p> <p><b>NA</b></p>				
D-ATIS ARR <b>133.4</b> DEP <b>135.925</b>	PHILADELPHIA APP CON <b>124.35 319.15</b>	PHILADELPHIA TOWER <b>118.5 327.05</b> (Rwys 9L/27R, 8/26 and 17/35) <b>135.1 327.05</b> (Rwy 9R/27L)	GND CON <b>121.9 348.6</b>	CLNC DEL <b>118.85 348.6</b>



CATEGORY	A	B	C	D
S-ILS 9R	421/35 400 (400-%)			

PHILADELPHIA, PENNSYLVANIA 39°52'N-75°14'W PHILADELPHIA INTL (PHL) ILS V RWY 9R (CONVERGING)

NE-4, 15 JUL 2021 to 12 AUG 2021

NE-4, 15 JUL 2021 to 12 AUG 2021